

Long Croft Lane

Cheadle Hulme, Cheadle

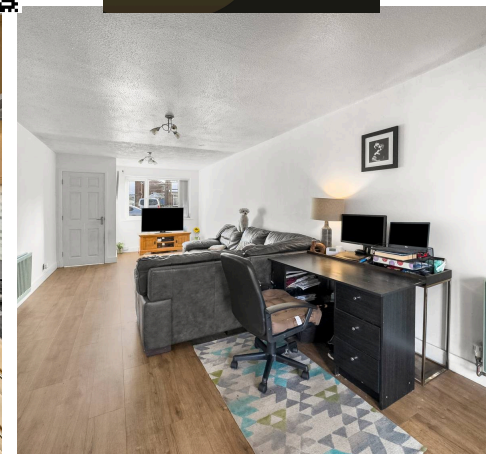
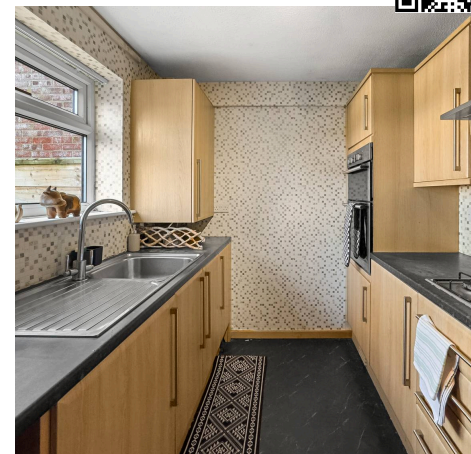
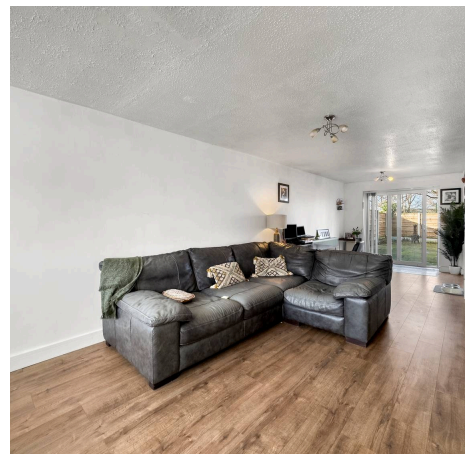
£345,000

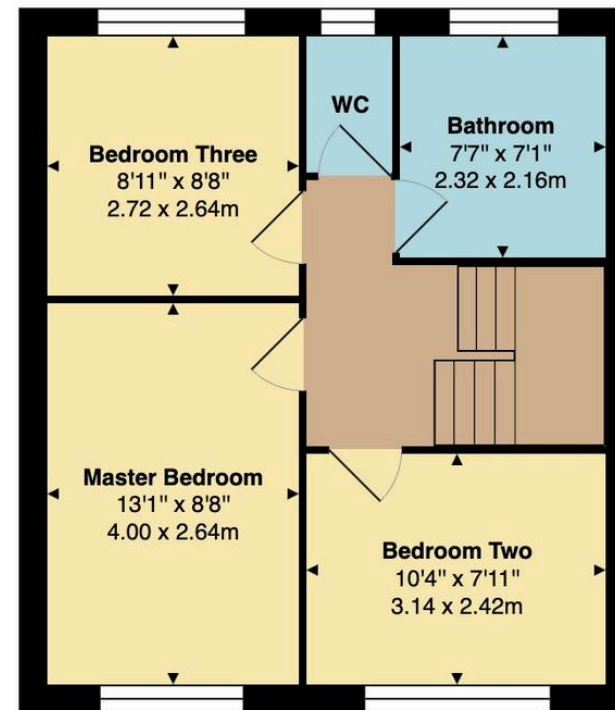
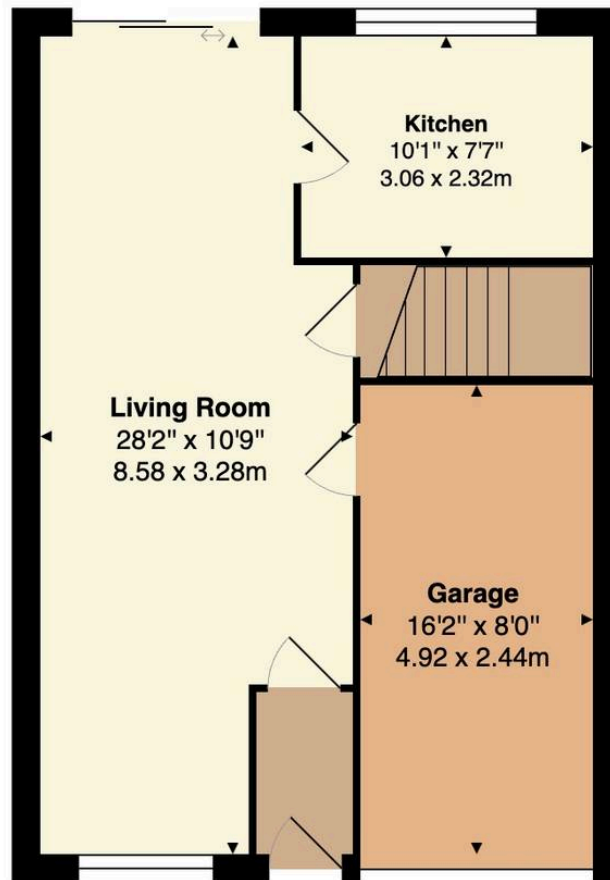
A nicely sized THREE bedroom semi detached home with an OPEN aspect to rear Living room/dining room, kitchen, integral garage, THREE GOOD SIZED bedrooms, bathroom, wc & a private garden. Freehold.

Council Tax band: C

Tenure: Freehold

- Nicely Sized Three Bedroom Semi Detached
- Open Plan Living Room/Dining Room & Kitchen
- Integral Garage
- Three Good Sized Bedrooms
- Bathroom & Separate WC
- Good Sized Private Rear Garden
- Open Aspect To Rear
- Catchment For Bradshaw Hall Primary & Cheadle Hulme High School
- Freehold





Approximate Total Area: 965 ft² ... 89.6 m²

All measurements are approximate.
 The floorplan may not include chimney breasts or support ribs and/or very small recess areas.
 If a total floor area is quoted, this will include ALL areas shown on the plan, inc garages.
 The area is calculated by the software and is approximate.







Cheadle Hulme Office

Andrew Snape Estate Agents, 31 Station Road – SK8 5AF

0161 485 2244

cheadlehulme@snapes.co.uk

www.snapes.co.uk/

