

Arden Close

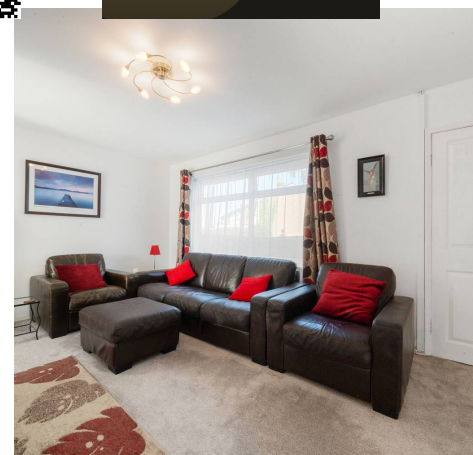
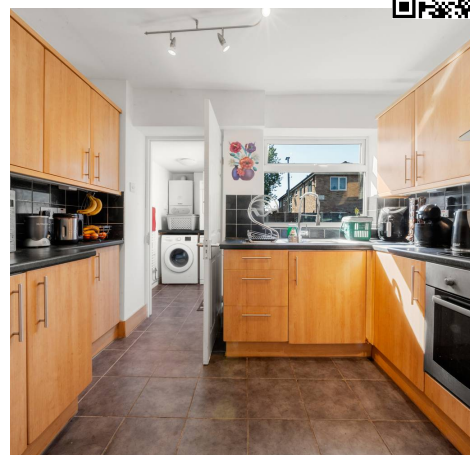
Heald Green, Cheadle

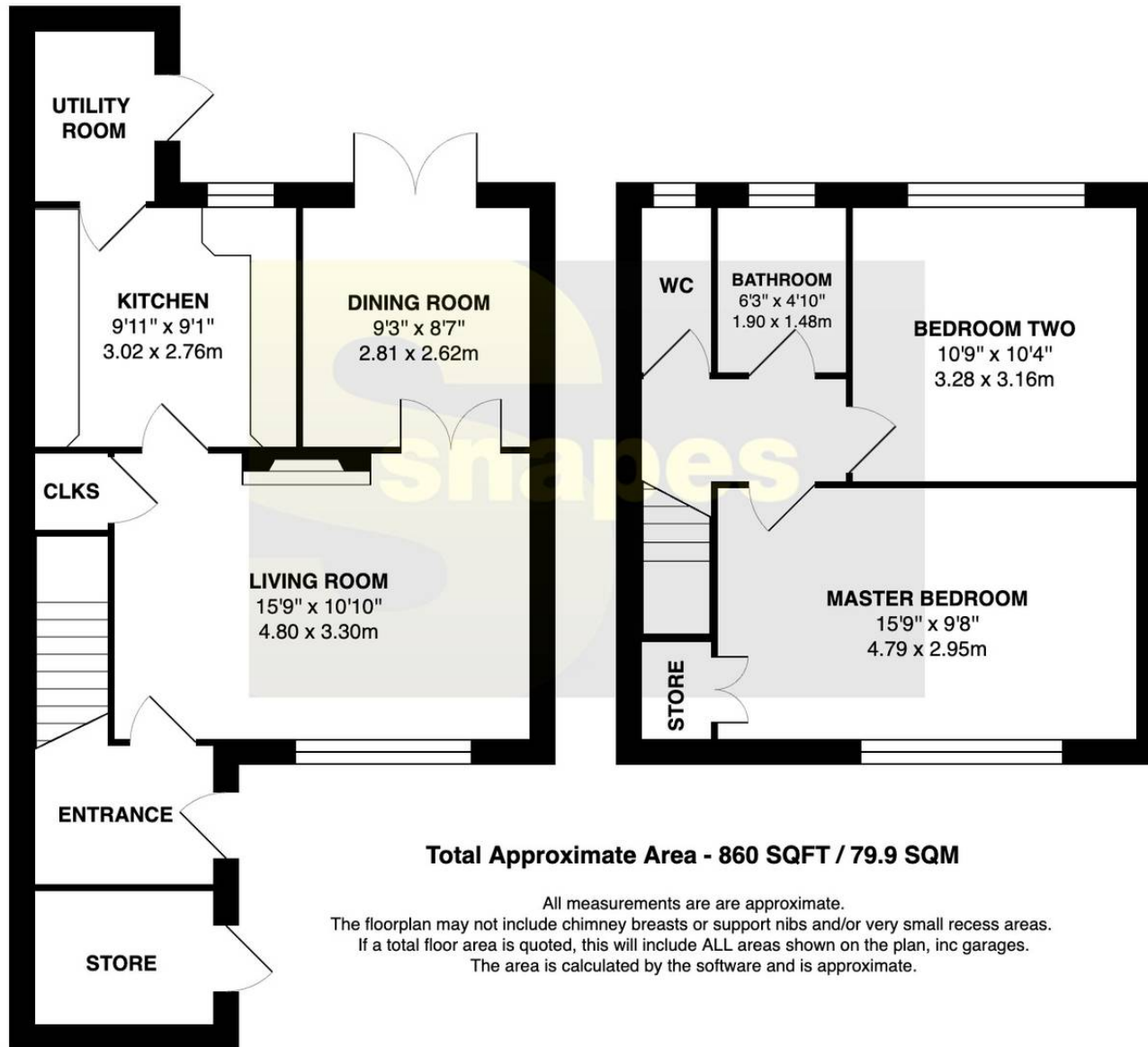
£249,950

Introducing a WELL PRESENTED and SPACIOUS TWO BEDROOM end of mews home. Entrance, TWO reception rooms, kitchen, utility room, TWO GOOD sized bedrooms, bathroom, wc as well as a GOOD SIZED PRIVATE rear garden, store room and ALLOCATED parking for two spaces. Freehold. Council Tax band: B

Tenure: Freehold

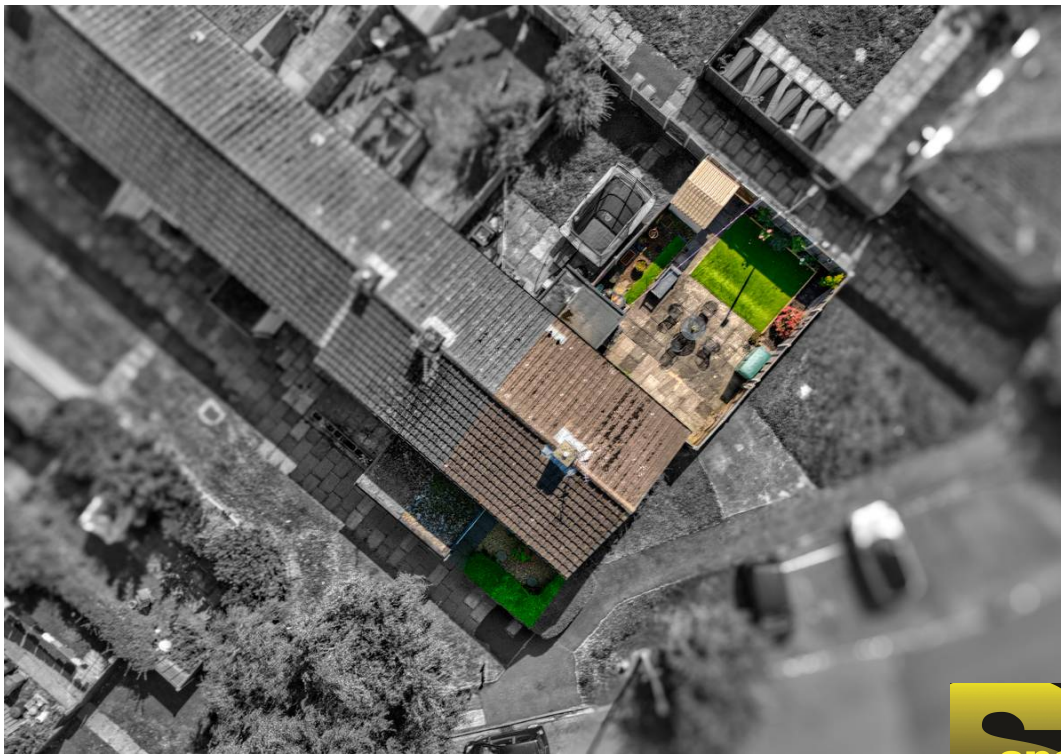
- Entrance Hallway & Two Reception Rooms
- Kitchen & Utility Room
- Two Good Sized Bedrooms, Bathroom & WC
- Good Sized Private Rear Garden
- Two Allocated Parking Spaces
- Highly Sought After Location
- Freehold





Total Approximate Area - 860 SQFT / 79.9 SQM

All measurements are approximate.
 The floorplan may not include chimney breasts or support nibs and/or very small recess areas.
 If a total floor area is quoted, this will include ALL areas shown on the plan, inc garages.
 The area is calculated by the software and is approximate.



snapes





Cheadle Hulme Office

Andrew Snape Estate Agents, 31 Station Road - SK8 5AF

0161 485 2244

cheadlehulme@snapes.co.uk

www.snapes.co.uk/

