

# Queens Road

Cheadle Hulme, Cheadle

**£625,000**

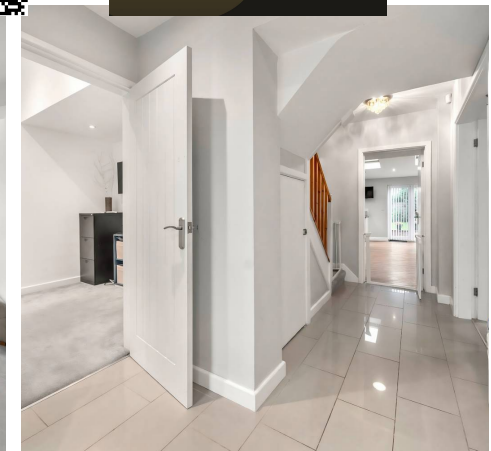
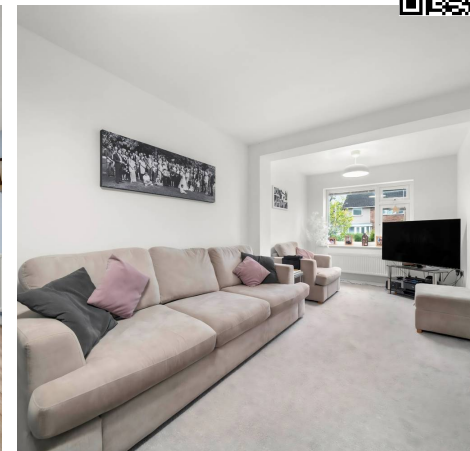
Council Tax band: E

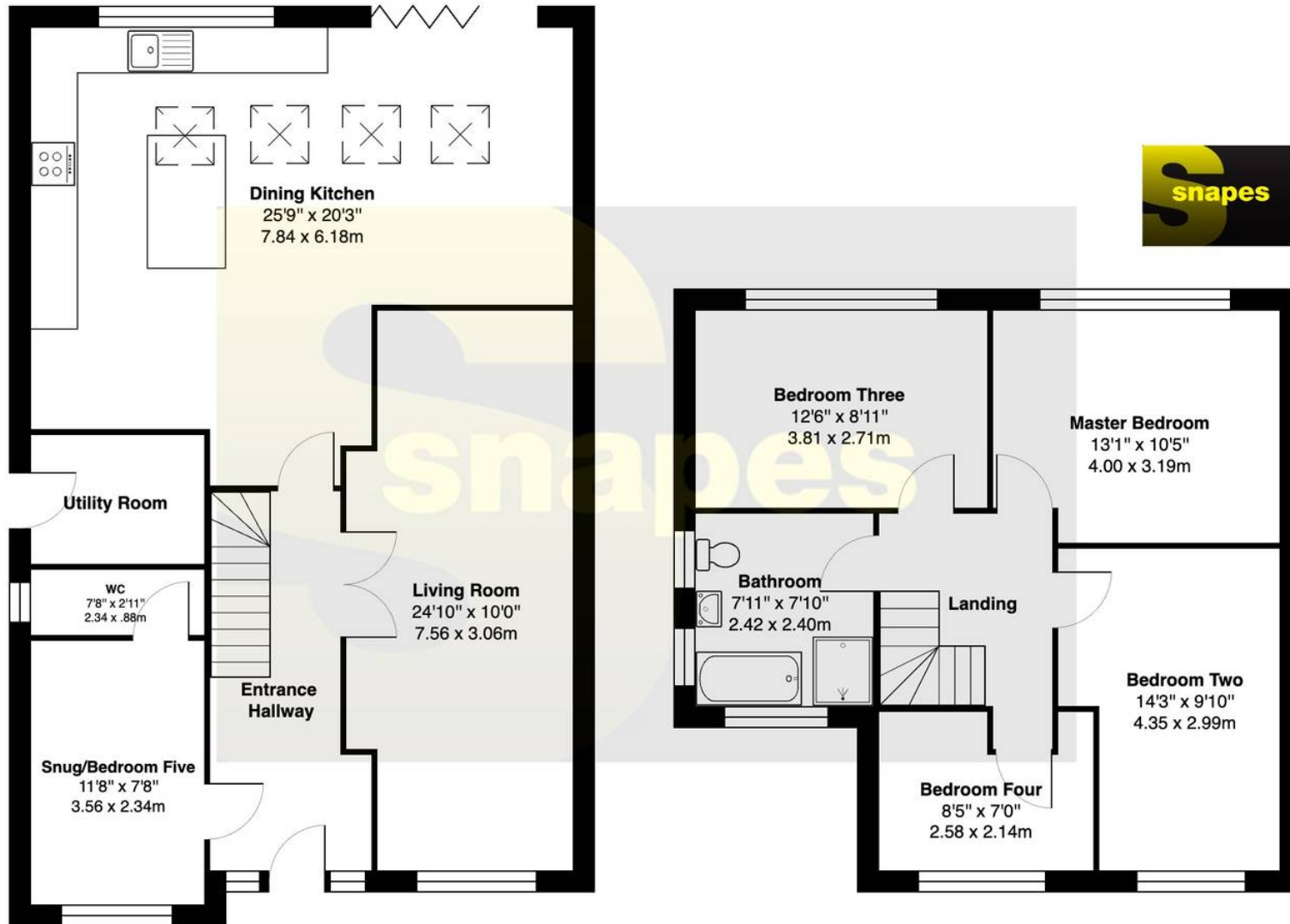
Tenure: Freehold

EPC Energy Efficiency Rating: C

EPC Environmental Impact Rating: C

- Extended Four/Five Bedroom Deatched Home
- Superb Living Accommodation Throughout
- Large Entrance Hallway, Living Room, Snug & WC
- Fantastic Open Plan Dining Kitchen With Bi-Folds
- Utility
- Four Good Sized Bedrooms To First Floor
- Modern Family Bathroom
- Lovely Sized South Easterly Facing Rear Gardens
- Freehold
- Catchment For CHHS





**Total Combined Approximate Area - 1491 SQFT / 138.5 SQM**

All measurements are approximate. The floorplan may not include chimney breasts or support nibs and/or very small recess areas.



**snapes**





## Cheadle Hulme Office

Andrew Snape Estate Agents, 31 Station Road - SK8 5AF

0161 485 2244

[cheadlehulme@snapes.co.uk](mailto:cheadlehulme@snapes.co.uk)

[www.snapes.co.uk/](http://www.snapes.co.uk/)

