



High Street, Barton-Upon-Humber, North Lincolnshire
Offers over £110,000





KEY FEATURES

- Total Floor Area:- 67 Square Metres
- GRADE II Listed Terraced Home
- Open Plan Living
- Bathroom & Ensuite
- Three Bedrooms
- Town Centre Location
- Transport Links
- Enclosed Rear Courtyard

DESCRIPTION

A wonderful Grade II Listed home, offering stylish accommodation over two floors with a quaint rear courtyard. Once you step inside - the lovely kitchen, living area merge together to create a fabulous open plan living space. Further on you find yourself on the first floor which has three bedrooms, one with en-suite. Book your viewing today!

PARTICULARS OF SALE

ENTRANCE

Entered via a wooden door into the open plan living space.

KITCHEN / LIVING AREA

5.85m x 3.64m

Comprehensive range of wall and base units with contrasting work surfaces and splash back tiling. Integral oven with four ring gas hob and extraction canopy over. Built-in wine refrigerator. Two windows to the front elevation.

BATHROOM

2.18m x 2m

Three piece suite incorporating a pedestal wash hand basin, push button WC and a bath tub with shower over. Window to the rear elevation.

FIRST FLOOR ACCOMMODATION

BEDROOM ONE

3.7m x 3.2m

Window to the front elevation.

EN-SUITE

2m x 0.87m

Three piece suite incorporating a pedestal wash hand basin, push button WC and corner shower cubicle.

BEDROOM TWO

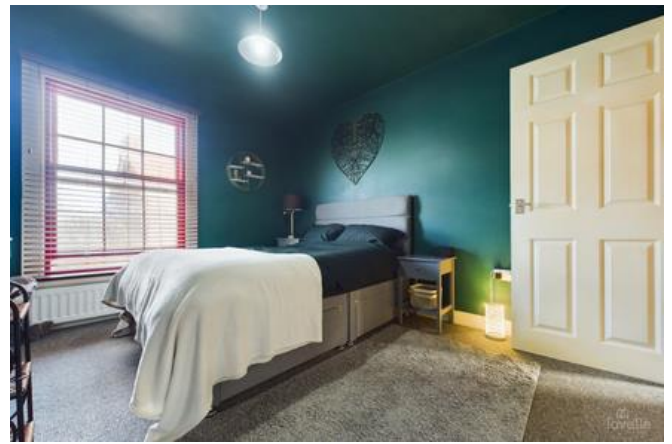
3.62m x 3.2m

Window to the front elevation.

BEDROOM THREE

2.24m x 2.17m

Window to the rear elevation.



OUTSIDE THE PROPERTY

REAR ELEVATION

Enclosed courtyard area.

LOCATION

Barton-upon-Humber is a highly regarded historic market town with Primary and Senior schools, quaint shops, supermarkets, stylish restaurants, cosy pubs, charming coffee shops and two petrol stations. It benefits from numerous recreational facilities and is surrounded by open countryside. The distinctive Churches, library, wildlife reserves and popular museums allow you to enjoy peace and tranquillity whilst the shopping and nightlife of neighbouring towns means you are never far away from a faster pace of life!

TENURE

The tenure of this property is Freehold.

LOCAL AUTHORITY

Council tax band: A

This property falls within the geographical area of North Lincolnshire Council - 01724 276444.

<https://www.northlincs.gov.uk/>

VIEWING

By appointment with the Sole Agent Lovelle Estate Agency, telephone 01652 636587.

We recommend prior to making an appointment to view, prospective purchasers discuss any particular points likely to affect their interest in the property with one of our property consultants who have seen the property in order that you do not make a wasted journey.

HOW TO MAKE AN OFFER

If you are interested in this property then it is important that you contact us at your earliest convenience. We will require certain pieces of personal information from you in order to provide a professional service to you and our client. The personal information you have provided to us may be shared with our client, the seller, but it will not be shared with any other third parties without your consent other than stated reasons detailed within our privacy policy. More information on how we hold and process your data is available on our website <http://www.lovelleestateagency.co.uk/privacy-policy.php> and you can opt out at any time by simply contacting us.

For any offer you wish to make we will need to establish certain details before negotiation can take place. This is so that our vendor can make an informed choice when negotiating and accepting your offer. You will be asked to provide formal I.D. and address verification, as required under new Money Laundering Legislation. You might also have one or two questions for us, such as which solicitor to choose, or which mortgage lender has the best offers available for me. We have a one stop shop to satisfy all of these needs so please ask.

MORTGAGE ADVICE

Budgeting correctly and choosing the right mortgage for a move is vital. For independent mortgage and insurance advice call our mortgage advisor on 01652 636587 to arrange an appointment.

ENERGY PERFORMANCE INFORMATION

A copy of the full Energy Performance Certificate for this property is available upon request. **Advisory Notes** - Please be advised if you are considering purchasing a property for Buy To Let purposes, from 1st April 2018 without an EPC rated E or above it will not be possible to issue a new tenancy, or renew an existing tenancy agreement.

AGENTS NOTE

These particulars are for guidance only. Lovelle Estate Agency, their clients and any joint agents give notice that:-

They have no authority to give or make representation/warranties regarding the property, or comment on the SERVICES, TENURE and RIGHT OF WAY of any property.

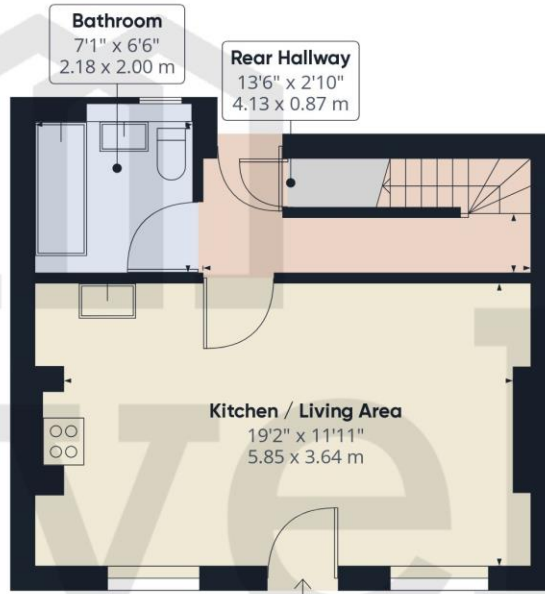
These particulars do not form part of any contract and must not be relied upon as statements or representation of fact.

All measurements/areas are approximate. The particulars including photographs and plans are for guidance only and are not necessarily comprehensive.

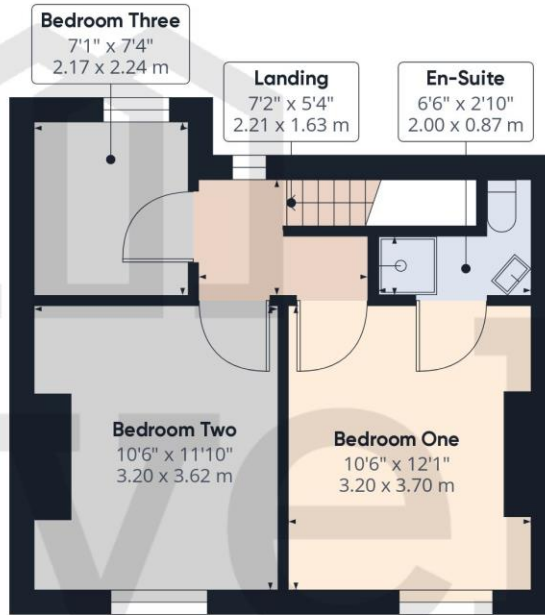
SKB Estates Limited T/A Lovelle Estate Agency



FLOOR PLANS



Ground Floor



Floor 1

