



Montreux Court 139 Soundwell Road, Soundwell,

£167,500

This well presented first floor flat is light, airy and offers great sized accommodation throughout. Ideally situated close to local bus routes, park and leisure centre in between the amenities of Staple Hill and Kingswood, the accommodation comprises hallway, lounge diner, kitchen double bedroom and shower room. The property is upvc double glazed, gas centrally heated and has an allocated parking space. Council Tax Band A, Energy Rating C. 961 Years remaining on lease, £25 p/a ground rent, current annual maintenance fee £780 p/a.

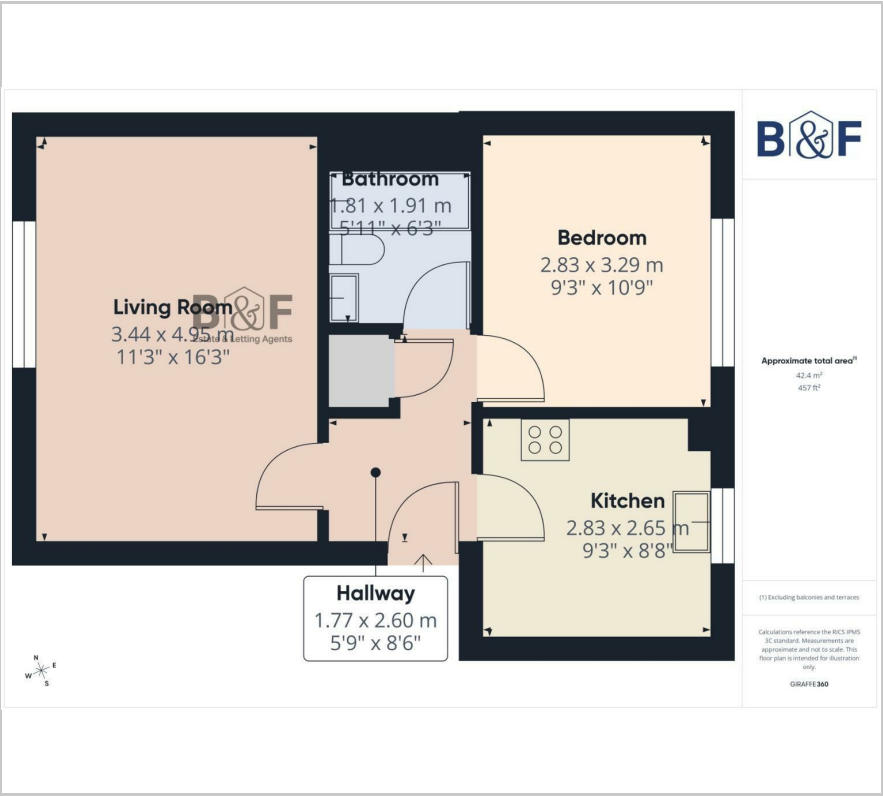
- First Floor Flat
- Double Bedroom
- Lounge Diner
- Separate Kitchen
- Shower Room
- Double Glazing
- Gas Central Heating
- Allocated Parking
- Close to Park
- On Bus Route

Viewing

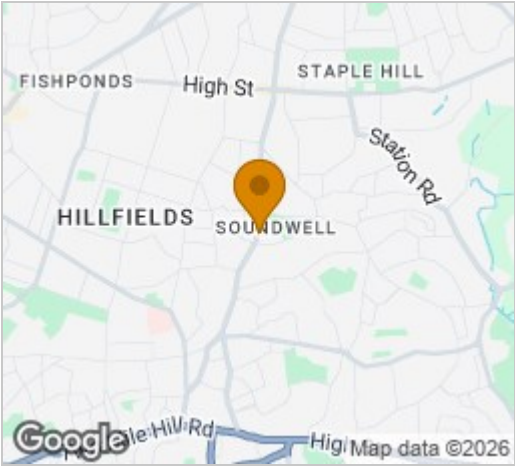
Please contact our Brunt & Fussell Ltd Office on 01179566004 if you wish to arrange a viewing appointment for this property or require further information.



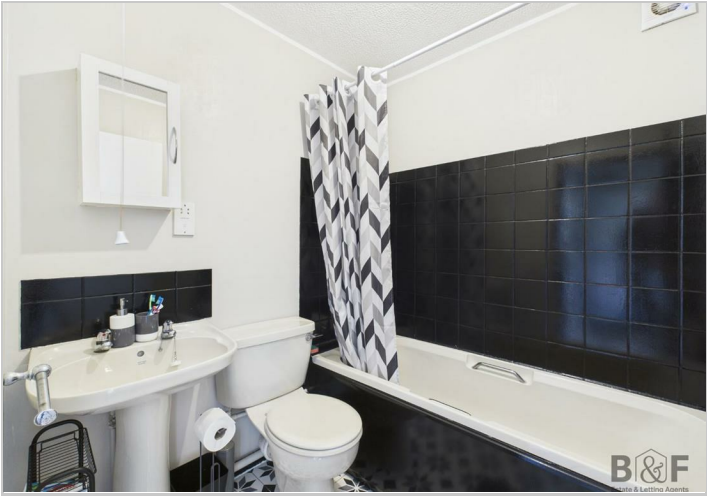
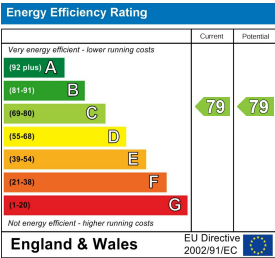
Floor Plan



Area Map



Energy Efficiency Graph



These particulars, whilst believed to be accurate are set out as a general outline only for guidance and do not constitute any part of an offer or contract. Intending purchasers should not rely on them as statements of representation of fact, but must satisfy themselves by inspection or otherwise as to their accuracy. No person in this firms employment has the authority to make or give any representation or warranty in respect of the property.