



## Broad Street, Staple Hill, Bristol, BS16 5FF

£315,000

Nestled in the heart of Staple Hill, Bristol, this exceptional retirement flat on Broad Street offers a perfect blend of comfort and convenience. Built after the year 2017, this purpose-built residence is designed with the needs of retirees in mind, ensuring a high-quality living experience.

The accommodation comprises hallway, lounge/dining room, fitted kitchen, two double bedrooms, (master with ensuite and separate dressing room) and shower room.

One of the standout features of this property is its prime location. Situated close to local shops, residents will find everything they need just a short stroll away, from daily essentials to delightful cafes. Additionally, the flat is conveniently located near Page Park, a lovely green space perfect for leisurely walks or enjoying the outdoors.

This retirement flat is not just a home; it is a community where comfort meets accessibility. With its high-quality finishes and thoughtful design, it is an excellent choice for those seeking a peaceful and fulfilling lifestyle in a vibrant area. Whether you are looking to downsize or simply wish to enjoy a more relaxed pace of life, this property is sure to meet your needs.

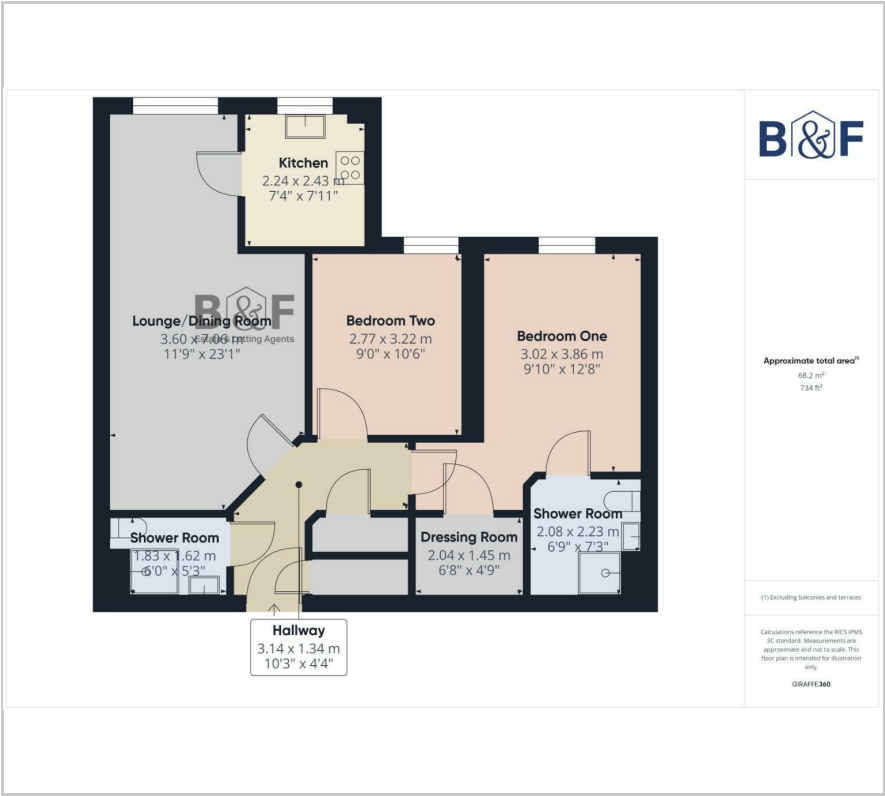
Energy Rating B. Council Tax. D

### Viewing

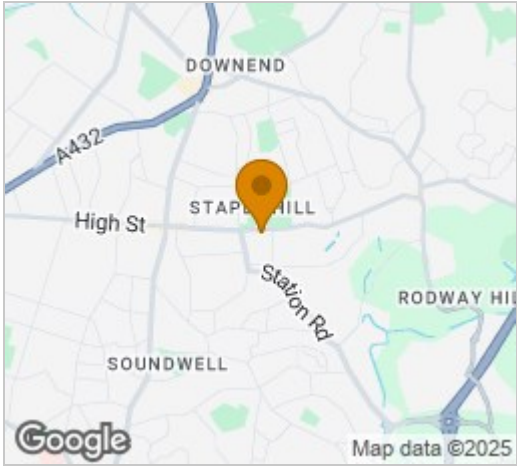
Please contact our Brunt & Fussell Ltd Office on 01179566004 if you wish to arrange a viewing appointment for this property or require further information.



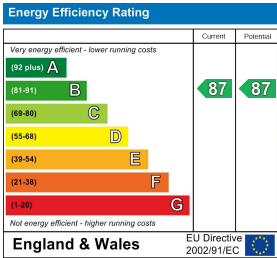
Floor Plan



Area Map



Energy Efficiency Graph



These particulars, whilst believed to be accurate are set out as a general outline only for guidance and do not constitute any part of an offer or contract. Intending purchasers should not rely on them as statements of representation of fact, but must satisfy themselves by inspection or otherwise as to their accuracy. No person in this firms employment has the authority to make or give any representation or warranty in respect of the property.