



1 North View, Soundwell, Bristol, BS16 4NT

£295,000

Offered with no onward chain, is this splendid two bedroom mid-terrace house, with a lovely landscaped enclosed South facing garden, with two workshops.

The property benefits from uPVC double glazing, gas central heating, modern kitchen and wet-room facilities.

The accommodation comprises storm porch, hallway, lounge, dining room, kitchen, lobby, cloakroom, on the ground floor, with two bedrooms and wet-room on the first floor.

Situated on this popular road within walking distance of the amenities of Staple Hill and Page Park. There is a good bus service locally and the ring road is only a short commute away. Energy Rating D. Council Tax B.

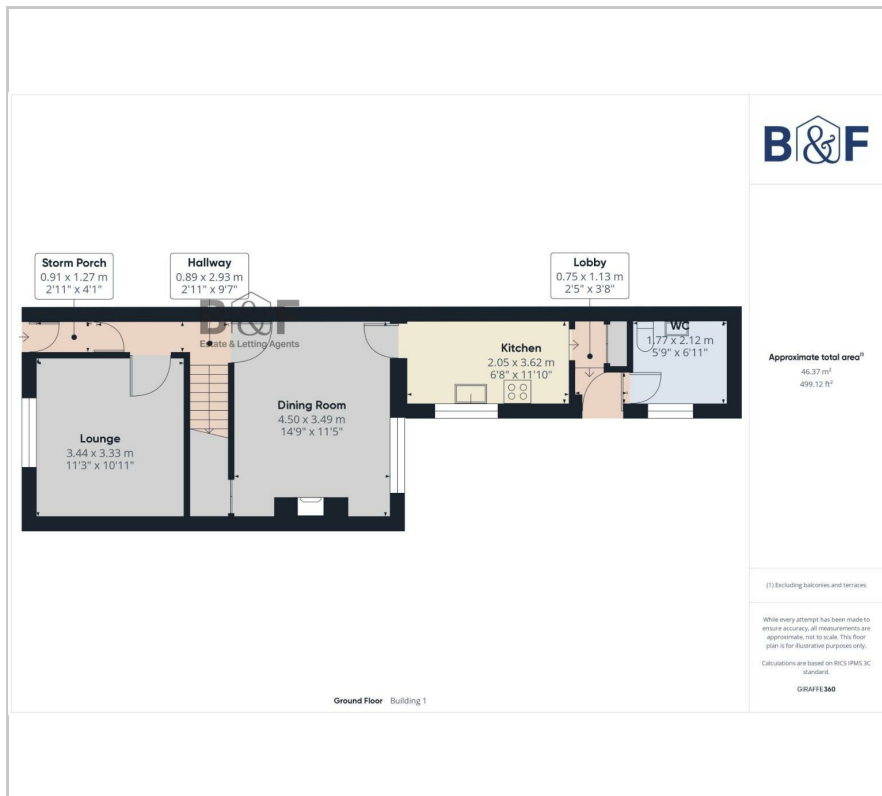
- Fine Period Built House
- Two Bedrooms
- Very Good Order
- Gas Central heating
- Double Glazing
- Modern Kitchen
- Cloakroom
- Landscaped Garden
- Two Workshops
- Two Reception Rooms

Viewing

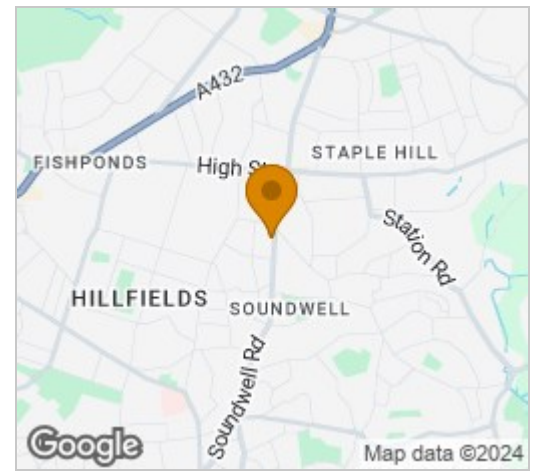
Please contact our Brunt & Fussell Ltd Office on 01179566004 if you wish to arrange a viewing appointment for this property or require further information.



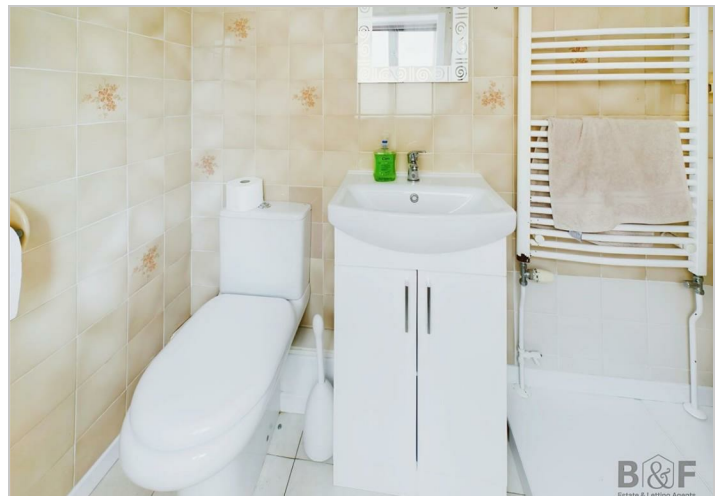
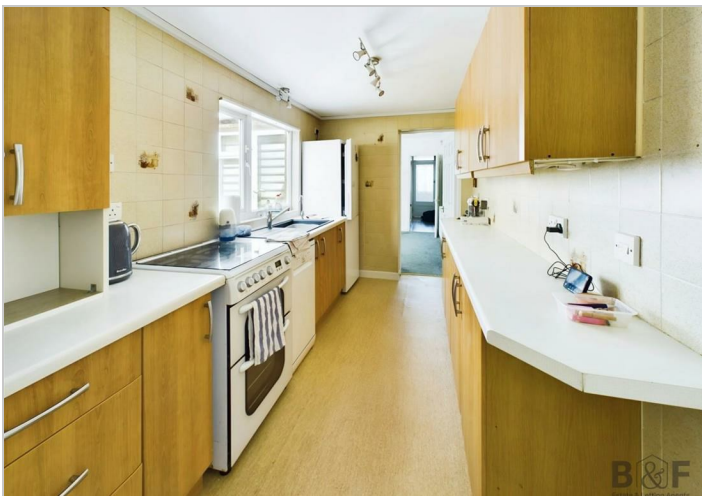
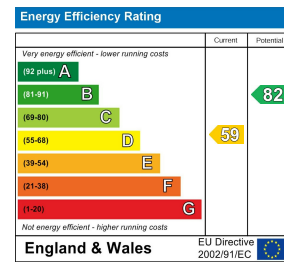
Floor Plan



Area Map



Energy Efficiency Graph



These particulars, whilst believed to be accurate are set out as a general outline only for guidance and do not constitute any part of an offer or contract. Intending purchasers should not rely on them as statements of representation of fact, but must satisfy themselves by inspection or otherwise as to their accuracy. No person in this firm's employment has the authority to make or give any representation or warranty in respect of the property.