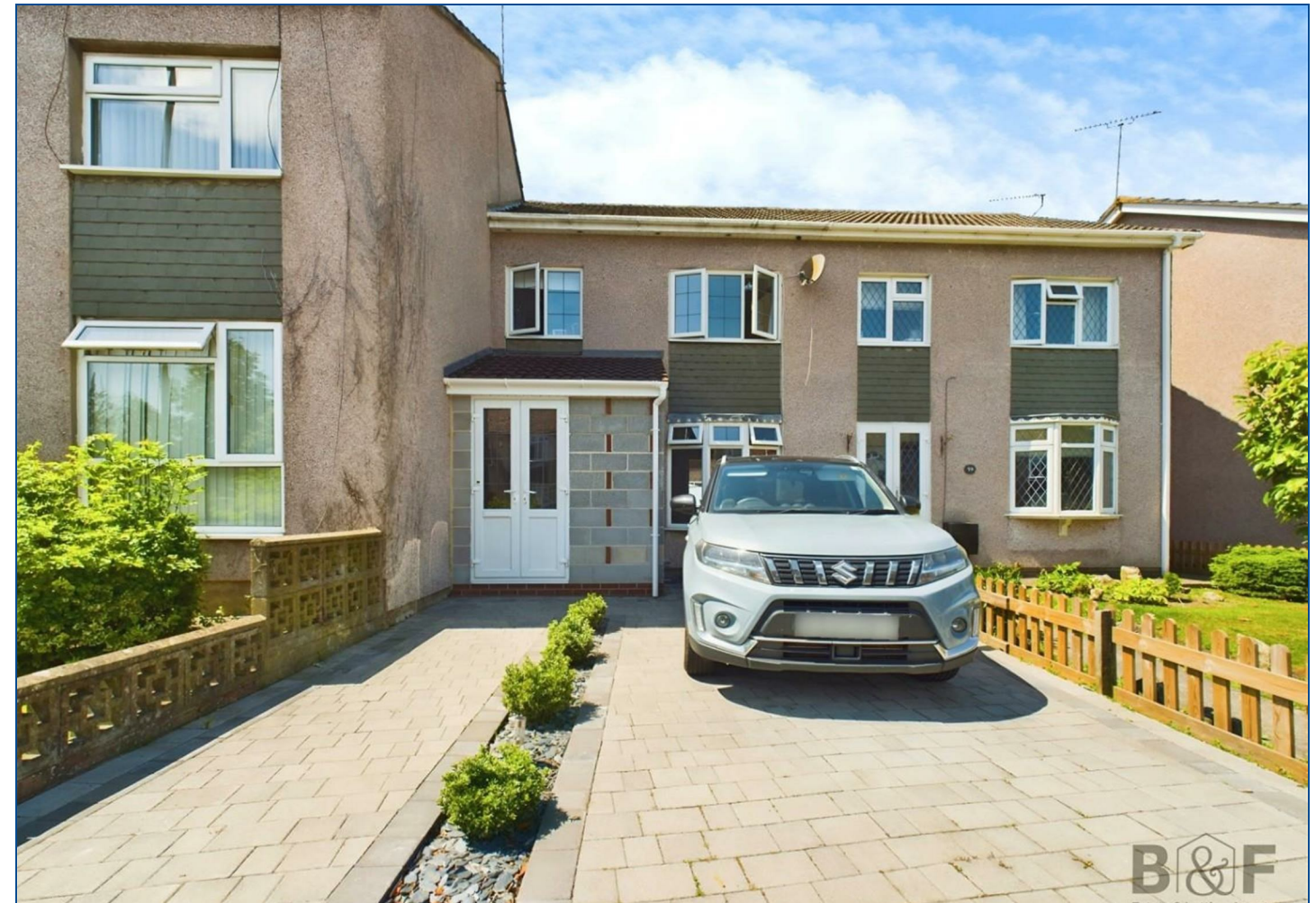
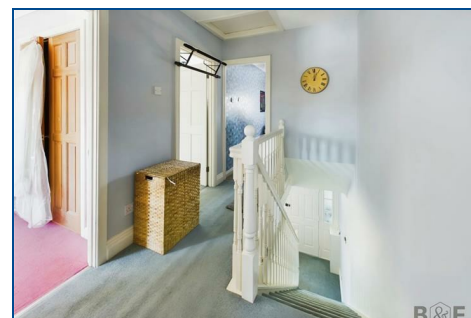
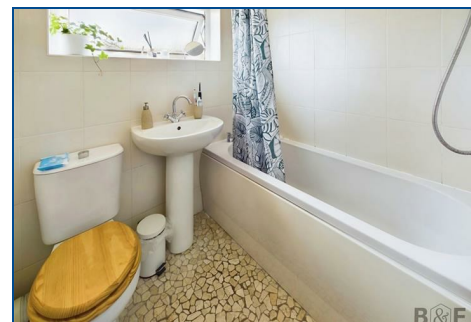
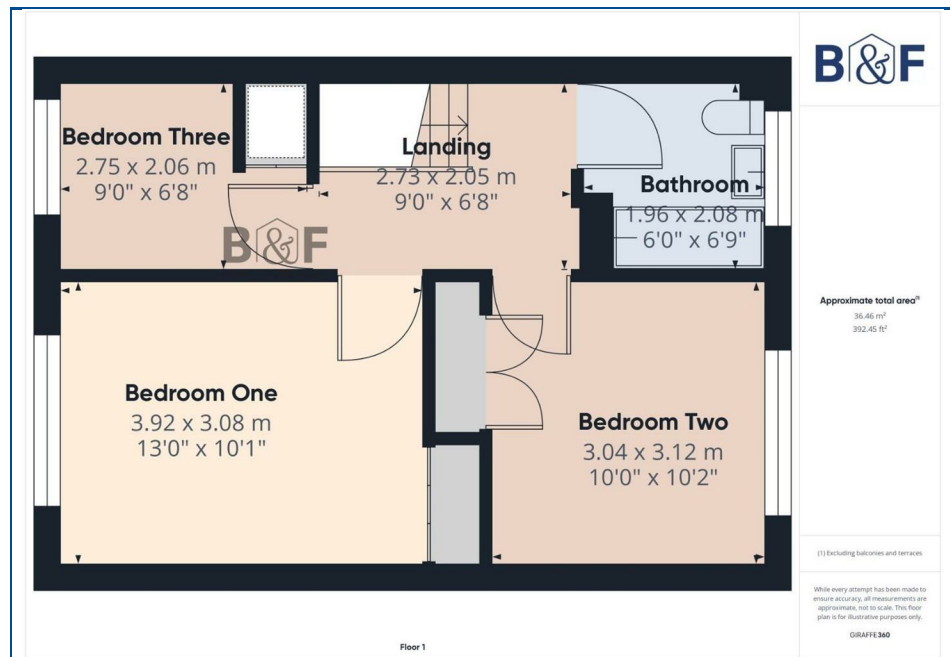
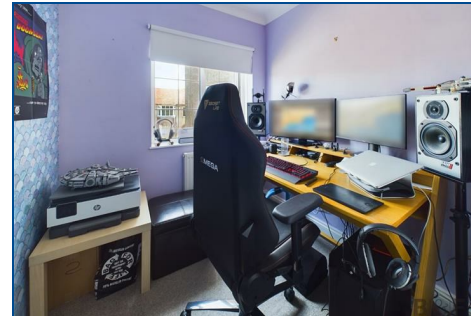
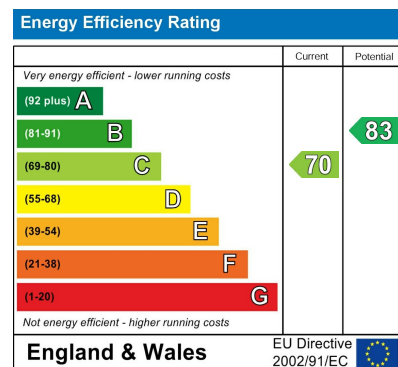


Brunt & Fussell

t: 01179566004 e: info@bruntandfussell.co.uk www.bruntandfussell.co.uk
141 High Street, Staple Hill, Bristol, BS16 5HQ



- Splendid House
- Gas Central Heating
- Modern Kitchen
- Modern Bathroom
- Close To Amenities
- Double Glazed
- Off-Street-Parking
- Popular Road
- Enclosed Sunny Garden
- Perfect First-Time-Buyers Property

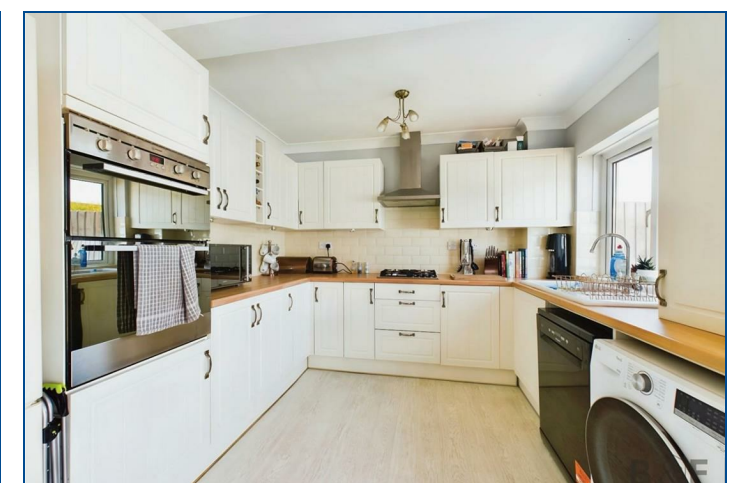
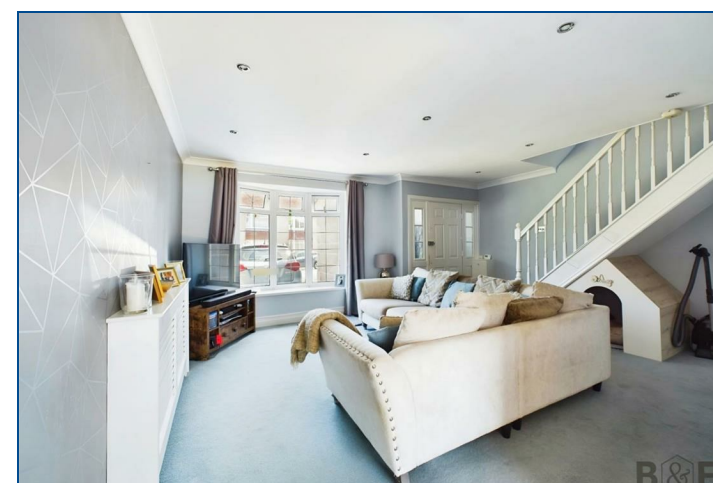


MONEY LAUNDERING REGULATIONS 2003

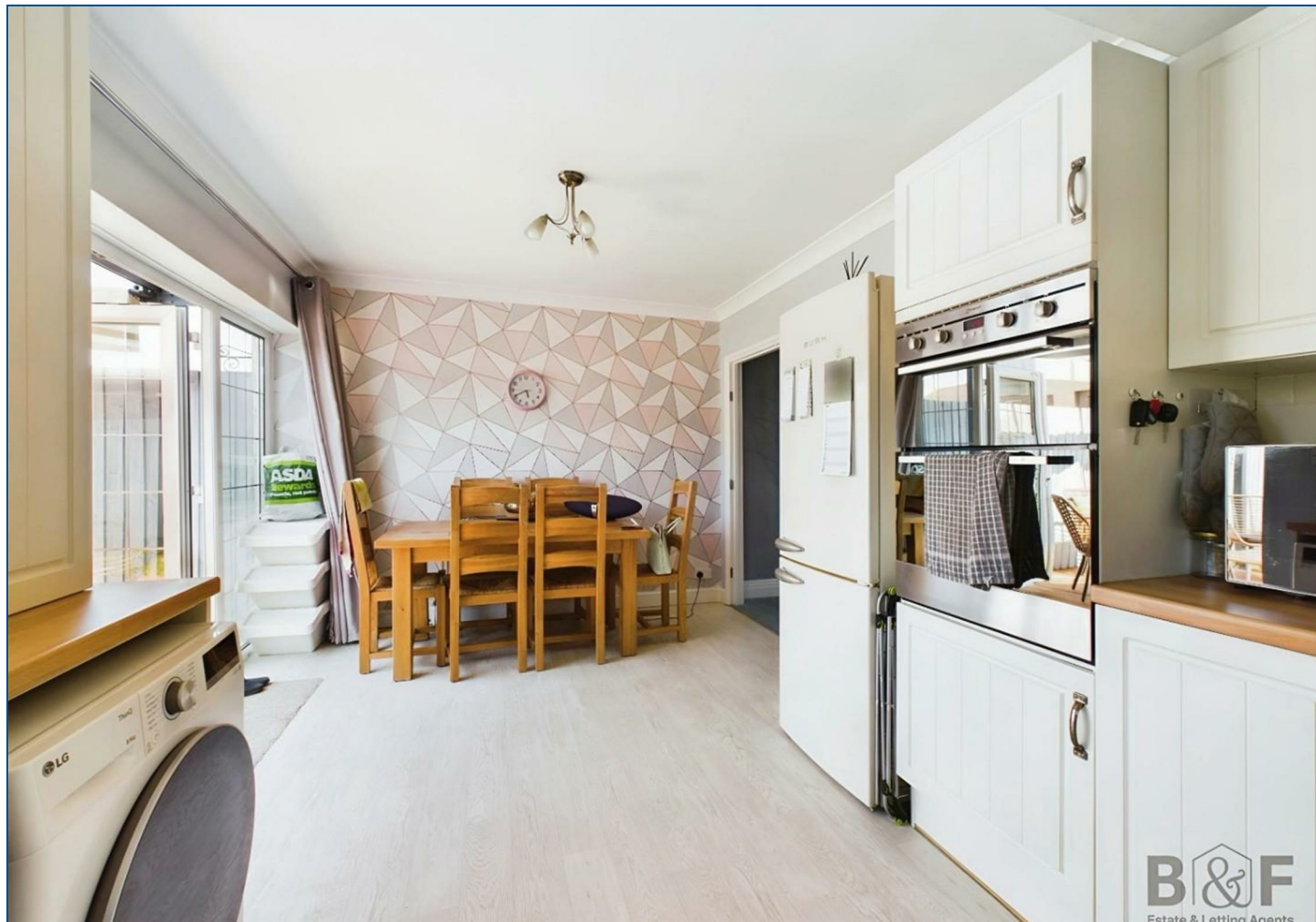
intending purchasers will be asked to produce identification and proof of financial status when an offer is received. We would ask for your co-operation in order that there will be no delay in agreeing the sale.

THE PROPERTY MISDESCRIPTIONS ACT 1991

The Agent has not tested any apparatus, equipment, fixtures and fittings or services and so cannot verify that they are in working order or fit for the purpose. A Buyer is advised to obtain verification from their Solicitor or Surveyor. References to the Tenure of a Property are based on information supplied by the Seller. The Agent has not had sight of the title documents. A Buyer is advised to obtain verification from their Solicitor. You are advised to check the availability of this property before travelling any distance to view. We have taken every precaution to ensure that these details are accurate and not misleading. If there is any point which is of particular importance to you, please contact us and we will provide any information you require. This is advisable, particularly if you intend to travel some distance to view the property. The mention of any appliances and services within these details does not imply that they are in full and efficient working order. These particulars are in draft form.



61 Grimsbury Road, Kingswood, Bristol, BS15 9SD
Offers Over £300,000



Entrance Vestibule 8 x 5'3

Living Room 15 x 17'1

Kitchen/Dining Room 10 x 17'1

Landing 9 x 6'8

Bedroom One 13 x 10'1

Bedroom Two 10 x 10'2

Bedroom Three 9 x 6'8

Bathroom 6 x 6'9

Outside

Off Street Parking to the front of the property.

Enclosed South Facing Rear Garden.

We are delighted to offer for sale this splendid three bedroom mid-terrace home with enclosed sunny garden and off-street-parking. The property is in good order throughout and offer spacious living accommodation.

Situated on this popular road close to Grimsbury Community Farm, local amenities, bus routes, schools and having good access to the ring road and Gallagher Retail Park.

The accommodation comprises entrance vestibule, lounge, kitchen dining room, three bedrooms and bathroom.

In our opinion this property is sure to be of interest to the first-time-buyer/ Young family. Early viewing Recommended.

Energy Rating C. Council Tax Band B.

** PLEASE INTERACT WITH OUR MARKET LEADING VIRTUAL TOUR **

