



## 2 Claymore Crescent, Kingswood, Bristol, BS15 1LA

£235,000

Offered with no onward chain is this staggered terrace home which requires full renovation and modernisation and clearly suits a buyer with the means and or skills to stamp their own mark on this home. In a small cul-de-sac, the accommodation comprises porch, hallway, lounge, kitchen diner. Upstairs are three bedrooms and bathroom which requires complete replacement. Outside is a driveway, with enclosed rear garden leading to a garage. Council Tax Band B, Energy Rating D.

- Needs Renovation
- Cul-De-Sac Position
- Staggered Terrace
- Three Bedrooms
- Lounge
- Kitchen Diner
- GCH & D/Glazing
- No Onward Chain

### Viewing

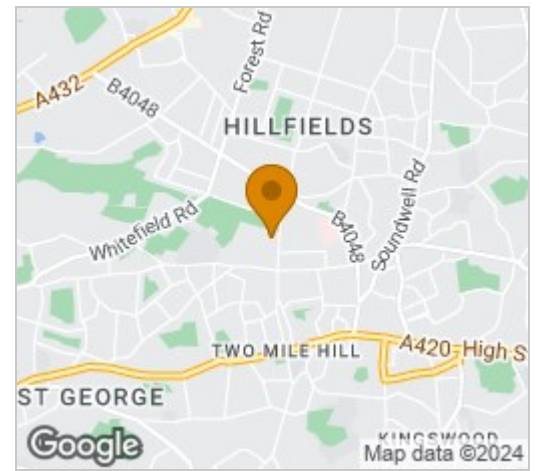
Please contact our Brunt & Fussell Ltd Office on 01179566004 if you wish to arrange a viewing appointment for this property or require further information.



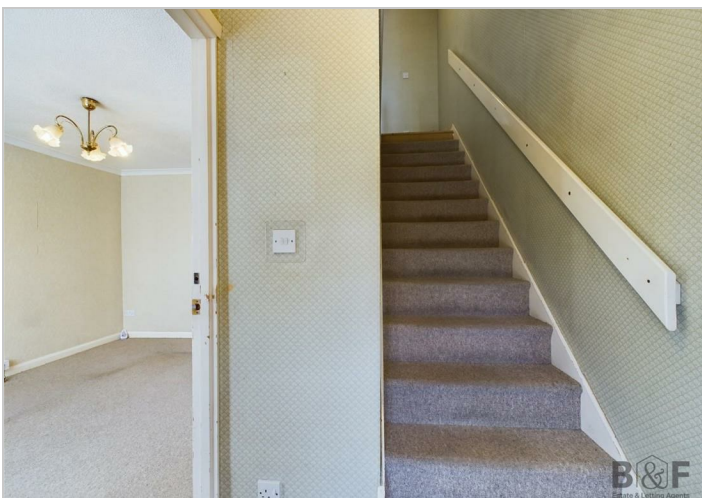
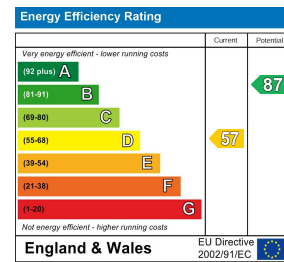
# Floor Plan



# Area Map



# Energy Efficiency Graph



These particulars, whilst believed to be accurate are set out as a general outline only for guidance and do not constitute any part of an offer or contract. Intending purchasers should not rely on them as statements of representation of fact, but must satisfy themselves by inspection or otherwise as to their accuracy. No person in this firm's employment has the authority to make or give any representation or warranty in respect of the property.