



## Berkeley Close, Bristol, BS16 6UJ

Asking Price £325,000

A fine three bedroom mid-terrace home with enclosed gardens and off-street parking. The property has been updated in recent years and benefits from fitted kitchen/diner, modern family bathroom, PVC double glazing and gas central heating. The accommodation briefly comprises kitchen/diner, spacious living room, three generous bedrooms and family bathroom. Tucked away in this popular cul de sac location, close to local schools, bus routes, and local amenities.

- Three Bedrooms
- Gas Ch & D/g
- Off-Street Parking
- Popular Location
- Cul de sac
- Close To Amenities

### Viewing

Please contact our Brunt & Fussell Ltd Office on 01179566004 if you wish to arrange a viewing appointment for this property or require further information.



3



1



2

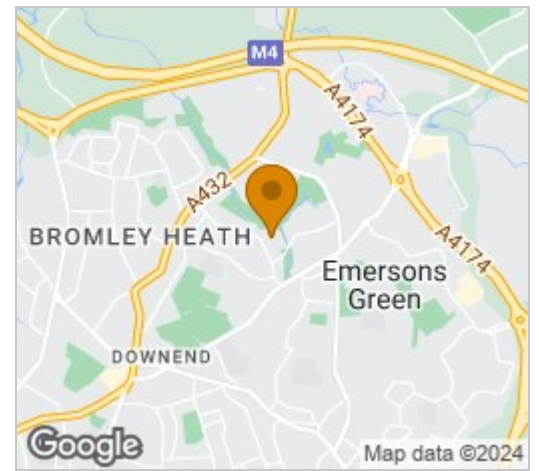


C

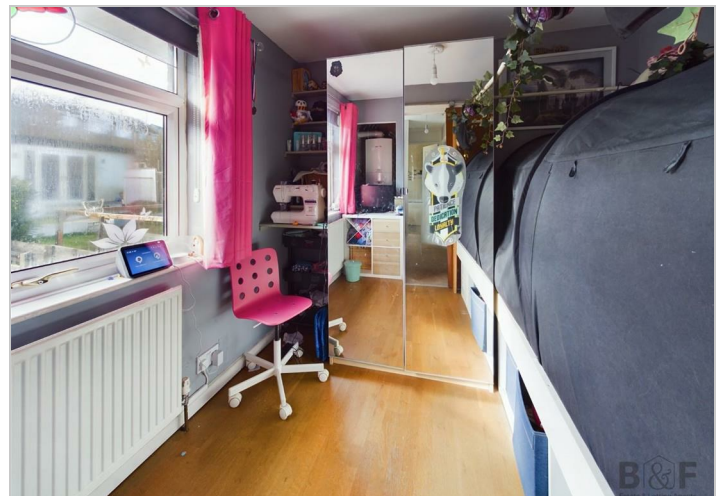
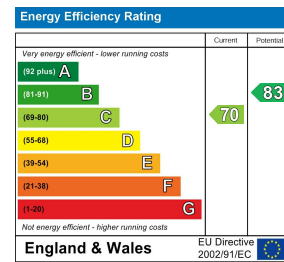
# Floor Plan



# Area Map



# Energy Efficiency Graph



These particulars, whilst believed to be accurate are set out as a general outline only for guidance and do not constitute any part of an offer or contract. Intending purchasers should not rely on them as statements of representation of fact, but must satisfy themselves by inspection or otherwise as to their accuracy. No person in this firm's employment has the authority to make or give any representation or warranty in respect of the property.