



## Woodchester, Kingswood, BS15 4XB

£375,000

GREAT LOCATION, NO CHAIN! Simply ready to move in to is this well presented semi detached home. Situated in a popular cul-de-sac, this ideal family home boasts hallway, living room, dining room, kitchen and utility room. Upstairs over two floors are three double bedrooms, fourth box bedroom/study and shower room. The property benefits from gas central heating, double glazing, ample rear garden, plus driveway and garage. Council Tax Band C, Energy Rating D.

- Great Location
- Semi Detached
- Three Double Bedrooms
- Fourth Bedroom/Study
- Kitchen & Utility Room
- Double Glazing
- Gas Central Heating
- Garage & Driveway
- No Onward Chain

### Viewing

Please contact our Brunt & Fussell Ltd Office on 01179566004 if you wish to arrange a viewing appointment for this property or require further information.

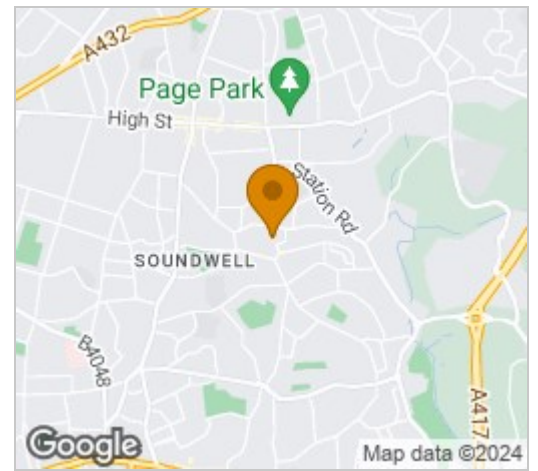




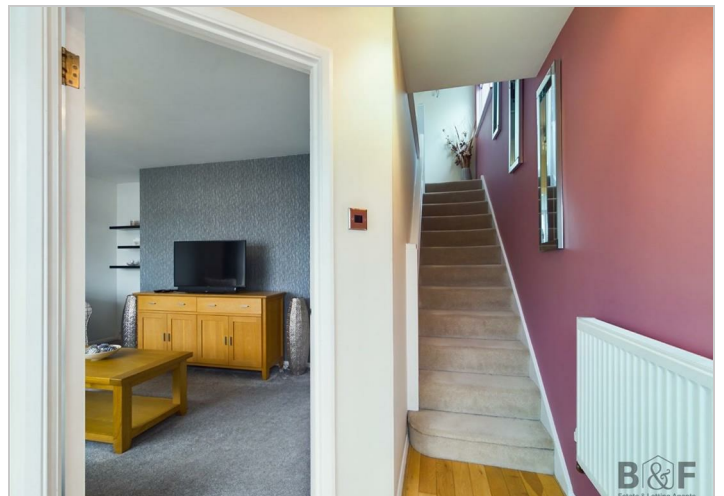
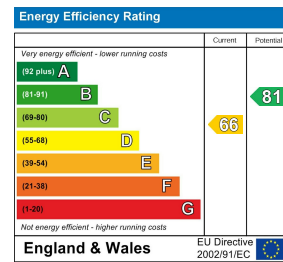
# Floor Plan



# Area Map



# Energy Efficiency Graph



These particulars, whilst believed to be accurate are set out as a general outline only for guidance and do not constitute any part of an offer or contract. Intending purchasers should not rely on them as statements of representation of fact, but must satisfy themselves by inspection or otherwise as to their accuracy. No person in this firm's employment has the authority to make or give any representation or warranty in respect of the property.