

# The Yarrow

Five bedroom home

---

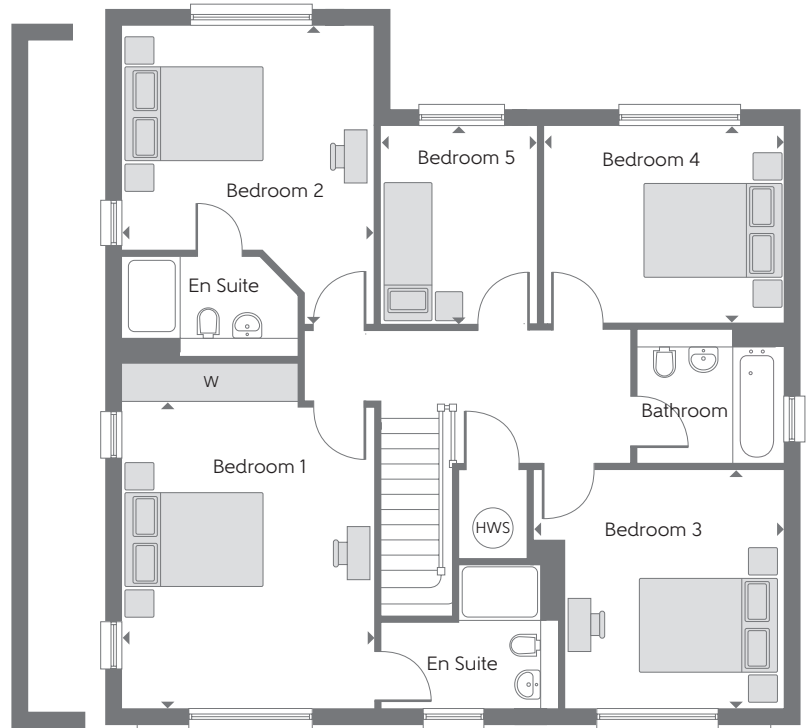


Brock Taylor  
2 - 6 East Street  
Horsham  
RH12 1HL  
01403 272022  
[www.brocktaylor.co.uk](http://www.brocktaylor.co.uk)

**Bellway**

### First Floor

|           |                 |                |
|-----------|-----------------|----------------|
| Bedroom 1 | 4.400m x 3.610m | 14'5" x 11'10" |
| Bedroom 2 | 4.280m x 3.610m | 14'0" x 11'10" |
| Bedroom 3 | 3.620m x 3.490m | 11'11" x 11'6" |
| Bedroom 4 | 3.460m x 2.800m | 11'4" x 9'2"   |
| Bedroom 5 | 2.800m x 2.320m | 9'2" x 7'7"    |



Window variation to plots 106 and 133

### Ground Floor

|                         |                 |                |
|-------------------------|-----------------|----------------|
| Kitchen/<br>Dining Room | 5.870m x 3.890m | 19'3" x 12'9"  |
| Family Room             | 4.350m x 3.610m | 14'3" x 11'10" |
| Living Room             | 3.550m x 6.200m | 11'8" x 20'4"  |
| Study                   | 3.610m x 3.200m | 11'10" x 10'6" |



Window variation to plots 106 and 133

Plots 62, 106 and 133 are a handed version of that shown.

**B** Boiler   **Clks** Cloakroom   **W** Fitted Wardrobe   **HWS** Hot Water Storage   **▶** Indicates where dimensions are taken from

Some items shown in this key may be subject to change, and positions could vary from those indicated on this floorplan. Please refer to Sales Advisor for details of your selected plot. Computer generated image shown overleaf. External finishes, landscaping and configuration may vary from plot to plot. Please refer to Sales Advisor for further details. All dimensions are approximate and should not be used for carpet sizes, appliance spaces or furniture. Furniture not to scale and all positions are indicative. We operate a policy of continuous improvement and individual features such as kitchen and bathroom layouts, doors, windows, garages and elevational treatments may vary from time to time. Consequently these particulars should be treated as general guidance only and do not constitute a contract, part of a contract or a warranty. Type L/M. Plots 2, 55, 62, 106 and 133. 167074/09/17.