



# Lettings.

Arundale Walk,  
Horsham RH12 1UP

Rent  
£1,450.00



# Arundale Walk, Horsham RH12 1UP



**PROPERTY** From the beautifully decorated Communal Hall, the apartment is located on the ground floor, accessed via a door leading to a private lobby area. Entering the property through the hall that houses a single cupboard housing the boiler and a double utility cupboard with washing machine, the impressive 21'9 x 12'5 Kitchen/Living Area with double doors leading out to a small patio area, the room is flooded with natural light and offers plenty of space for sofas and a dining table, which makes it ideal for entertaining. The stylish Kitchen is fitted with a modern range of floor and wall mounted units and boasts a selection of integrated appliances. There is a luxurious Family Bathroom and two superb double Bedrooms, with the Main Bedroom boasting large built in wardrobes and an En Suite Shower Room.

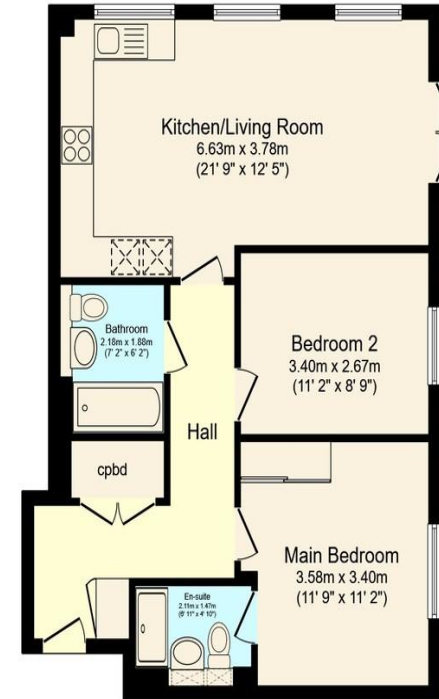
**OUTSIDE** This stylish home is situated on a modern development and is surrounded by well kept communal gardens. This property comes with an allocated parking space, located outside the apartment, and there is plenty of additional visitor spaces too. This particular property has a small patio situated outside the double doors from the living area, this space is perfect for potting plants.



Total Approximate Floor Area  
**700 sq ft / 65 sq m**

Viewing arrangements by  
appointment through :

Brock Taylor  
01403 272022  
horshamlettings@brocktaylor.co.uk

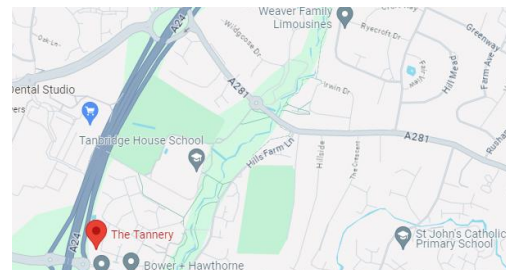


## Floor Plan

Floor area 65.0 sq.m. (700 sq.ft.) approx

Total floor area 65.0 sq.m. (700 sq.ft.) approx

### Map Location



### EPC Rating

Score	Energy rating	Current	Potential
92+	A		
81-91	B	84 B	84 B
69-80	C		
55-68	D		
39-54	E		
21-38	F		

**Brock Taylor Disclaimer:** we would like to inform prospective purchasers that these sales particulars have been prepared as a general guide only. A detailed survey has not been carried out, nor the services, appliances and fittings tested. Room sizes should not be relied upon for furnishing purposes and are approximate. If floor plans are included they are for guidance only and illustration purposes only and may not be to scale. If there are any important matters likely to affect your decision to buy, please contact us before viewing this property.

**Residential sales, lettings,  
land and new homes.**

**01403 272022**  
**brocktaylor.co.uk**

2-6 East Street, Horsham, West Sussex, RH12 1HL

- Buses**  
7 mins walk  
0.3 miles
- Shops**  
Tesco Extra  
1.6 miles
- Trains**  
Horsham  
3.0 miles
- Sport & Leisure**  
The Gym  
2.0 miles
- Airport**  
Gatwick  
15 miles
- Schools**  
Tanbridge Secondary  
1.2 miles
- Broadband**  
Up to 500 Mbps
- Roads**  
M23
- Council Tax**  
Band B