



North Street, Horsham RH12 1FA



LOCATION Holmes Park embodies the true meaning of a central location. A stone's throw away is Horsham town centre, a thriving historic market town with an excellent selection of national and independent retailers including a large John Lewis at Home and Waitrose store. There are twice weekly award winning local markets in the Carfax in the centre of Horsham for you to stock up on local produce, or head to East Street, or 'Eat Street' as it is known locally, where there is a wide choice of restaurants ranging from Pizza Express to the Michelin starred Tristan's. You are spoilt for choice when it comes to activities as there is Pavilions leisure centre with it's gym and swimming pool and Holmes Park is directly opposite Horsham Park, whilst next door is The Capitol, with cinema and theatre. There are some beautiful walks and cycle rides in the immediate countryside. Further afield, the stunning South Downs and coast are within easy reach. For those needing to commute, Horsham Station is a one minute stroll away, with a direct line to Gatwick (17 minutes) and London Victoria (52 minutes) and there is easy access to the M23 leading to the M25.

THE PROPERTY This generous furnished apartment is located on the second floor with the front door opening to the bright open plan living area which is a particular feature of the apartment. The Kitchen area boasts a range



Buses
mins walk



Shops



Trains
Horsham –
Littlehaven –



Sport & Leisure
Pavilions in the Park
miles



Airport
Gatwick
miles



Schools



Broadband
Up to Mbps



Roads
M23



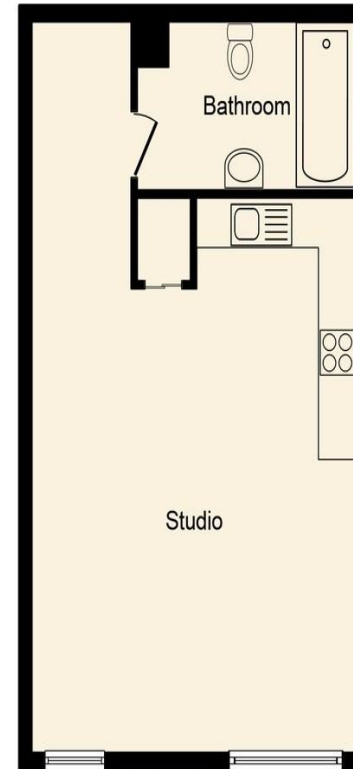
Council Tax
Band A

Total Approximate Floor Area

/

Viewing arrangements by
appointment through :

Brock Taylor
01403 272002
horshamlettings@brocktaylor.co.uk



Total floor area 45.0 sq. m. (484 sq. ft.) approx Floor area 45.0 sq. m. (484 sq. ft.) approx

This floor plan is for illustration purposes only and may not be representative of the property. The position and size of doors, windows and other features are approximate. Unauthorized reproduction prohibited. © PropertyBOX

Map Location

EPC Rating



Brock Taylor Disclaimer: we would like to inform prospective purchasers that these sales particulars have been prepared as a general guide only. A detailed survey has not been carried out, nor the services, appliances and fittings tested. Room sizes should not be relied upon for furnishing purposes and are approximate. If floor plans are included they are for guidance only and illustration purposes only and may not be to scale. If there are any important matters likely to affect your decision to buy, please contact us before viewing this property.

Residential sales, lettings,
land and new homes.

01403 272002
brocktaylor.co.uk

2-6 East Street, Horsham, West Sussex, RH12 1HL