



Salvisberg Court,
Otto Road,
Welwyn Garden City,
AL7

 1 Bedroom

 1 Bath/Shower Room

 1 Reception Room

 Allocated Parking

 Communal Grounds

 EPC Band C

Council Tax
Band: C – £1,782.43 (25/26)

Deposit £1,269.20
Holding Deposit £253.84

Asking Price
£1,100

 **ashtons**
for life's great moves



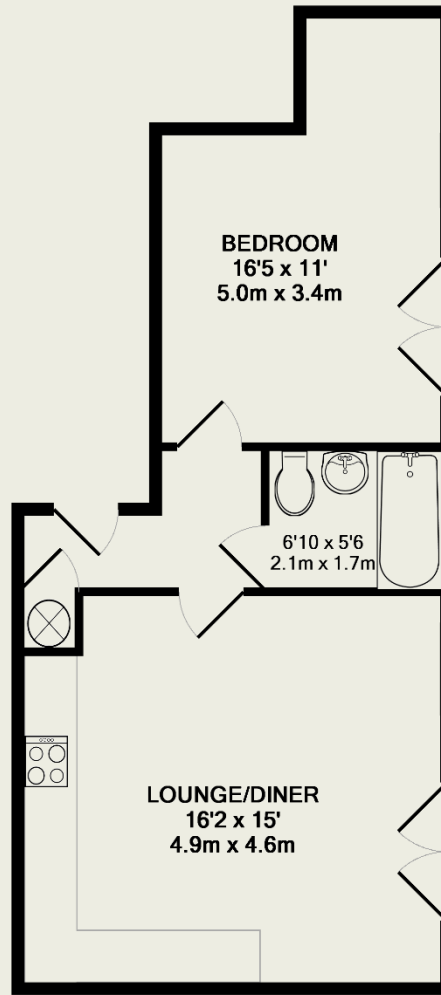
A nicely presented one bedroom 2nd floor apartment ideally located for the town center and train station.

Description

This beautifully presented 2nd floor apartment comprises of a lounge/dining area with open plan well equipped fitted kitchen with integral appliances, double bedroom, modern bathroom with shower over the bath. The property benefits from a security entry phone system and a lift to all floors.

Location

The development is within walking distance to the town centre and its extensive amenities which include John Lewis, The Howard Centre and the Mainline BR station (London Kings Cross 28 Minutes).



TOTAL APPROX. FLOOR AREA 475 SQ.FT. (44.2 SQ.M.)

This floor plan is for illustrative purposes only.
The measurement and position of each element is approximate and must be viewed as such.

Important Information

These particulars do not constitute an offer or contract in whole or part. The statements contained herein are made without responsibility on the part of Ashtons or the vendors and they cannot be relied upon as representatives of fact. In respect of floor plans, these are for illustrative purposes only. The measurement and position of each element is approximate and must be viewed as such. Intending purchasers should therefore satisfy themselves by inspection or otherwise as to their correctness. The vendors do not make or give, and neither Ashtons nor any person in their employment has any authority to make or give, any representation or warranty whatsoever in relation to this property.

We offer a wide range of services through third-party providers including solicitors, surveyors, removal firms, mortgage providers and EPC suppliers. We receive additional payments for administering suppliers quoting software and making referrals. You are not under any obligation to use these services and it is your discretion whether you choose to deal with these parties or your own preferred supplier. You should be aware the average payment we received in 2021 equated to £48.36 per referral.

