



Eddington Crescent,
Welwyn Garden City,
AL7 4SX

 1 Bedroom

 1 Bathroom

 1 Reception Room

 Allocated Parking

 Communal

 EPC Band B

Council Tax
Band: B £1,782.43 (25/26)

Deposit £1,384.60
Holding Deposit £276.92

£1,200 PCM

 **ashtons**
for life's great moves



A one bedroom first floor apartment situated within this popular development

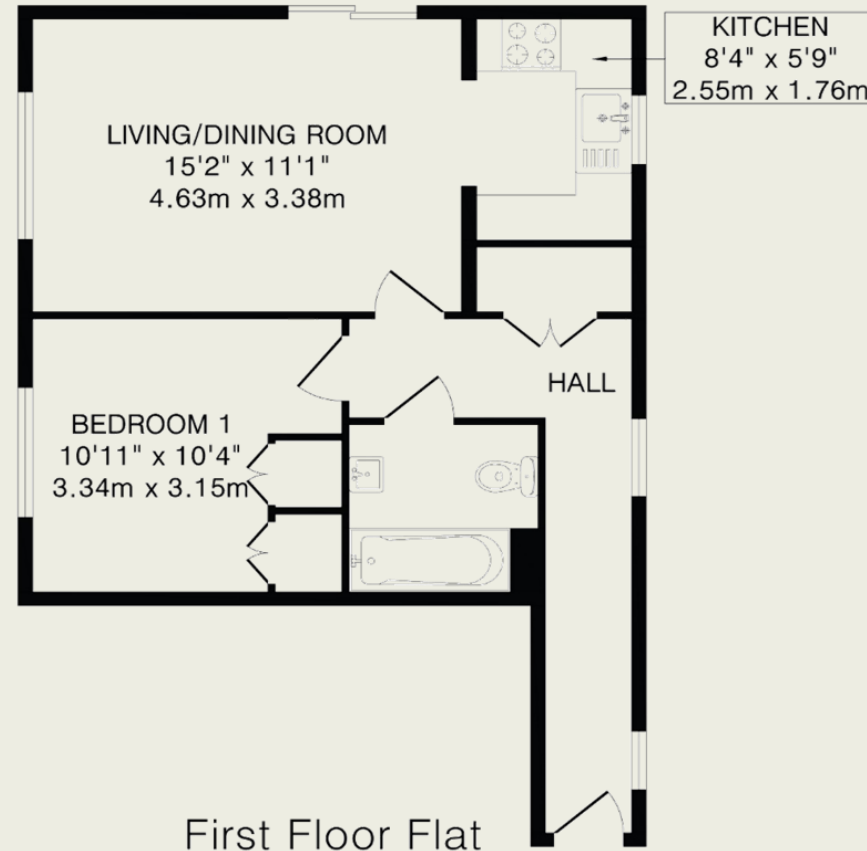
Description

This lovely apartment consists of a fitted kitchen with integral appliances which is off a lounge/diner with patio doors to the balconette. The bedroom benefits from wardrobe space and there is a good size bathroom.

Externally the property boasts allocated parking.

Location

Eddington Crescent is a modern development located to the south of Welwyn Garden City town centre. The main shopping amenities - John Lewis, Sainsburys, Howard Shopping Centre - and mainline rail station (London Kings Cross 25 minutes) are a 10 minute bike ride away. All major road links (A414 Hertford Road and A1(M) motorway) are just a short drive away.



TOTAL FLOOR AREA: 488 sq.ft.(45.3 sq.m)approx.

This floorplan is for illustration purposes only. The measurements and position of each element are approximate and must be viewed as such.

These particulars do not constitute an offer or contract in whole or part. The statements contained herein are made without responsibility on the part of Ashtons or the vendors and they cannot be relied upon as representatives of fact. In respect of floor plans, these are for illustrative purposes only. The measurement and position of each element is approximate and must be viewed as such. Intending purchasers should therefore satisfy themselves by inspection or otherwise as to their correctness. The vendors do not make or give, and neither Ashtons nor any person in their employment has any authority to make or give, any representation or warranty whatsoever in relation to this property.