



Constables
SALES & LETTINGS

Neston Road

Willaston, Neston

£400,000

Constables are delighted to offer for sale this fantastic two bedroom mid terrace cottage in the heart of Willaston. This property is finished to a very high standard and is immaculately presented throughout. The accommodation comprises; Entrance hall, downstairs W/C, spacious open plan kitchen-Living Room with log burning stove and double doors out onto the garden. The kitchen has granite work surfaces and an integrated double oven, five ring gas hob, wash-drier, fridge and dishwasher.

To the first floor there are two double bedrooms with fitted wardrobes and en-suites to both. To the front of the property there is a low maintenance gravelled frontage and a large rear garden with lawn and shed. Two parking spaces are located behind the rear garden.

The property is available with no onward chain and early viewing is essential.





Constables

SALES & LETTINGS

- Mid-Town House
- Open Plan Living Space
- Off Road Parking
- No Onward Chain

- Two Double Bedrooms
- High Specification Throughout
- Council Tax Band: D (Cheshire West & Chester)

- Two Bathrooms
- Garden with Lawn, Patio and Shed
- Tenure: Freehold

Entrance Hall

W/C

Kitchen

5'11" x 9'3" (1.81m x 2.83m)

Lounge-Dining Room

23'11" x 16'3" (7.31m x 4.97m)

Landing

Bedroom One

11'8" max x 14'3" (3.56m max x 4.36m)

En-Suite Bathroom

8'0" x 8'0" (2.44m x 2.46m)

Bedroom Two

11'10" x 10'11" (3.61m x 3.35m)


En-Suite Bathroom

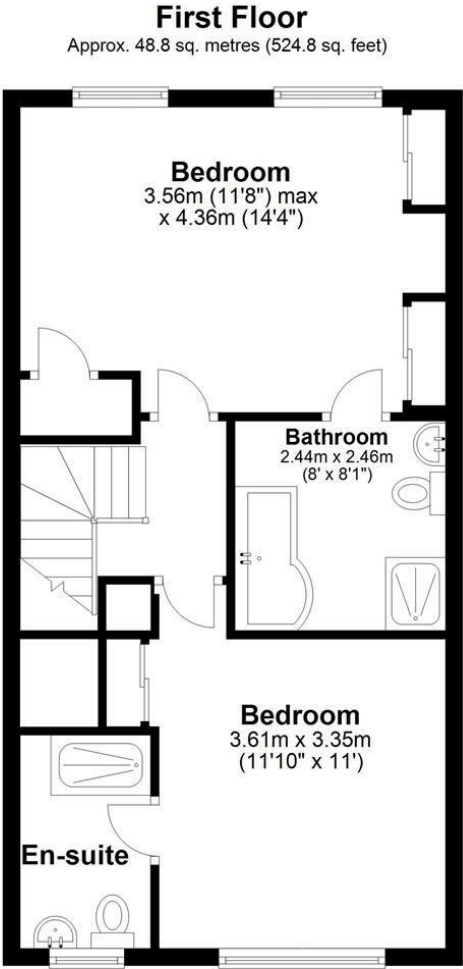
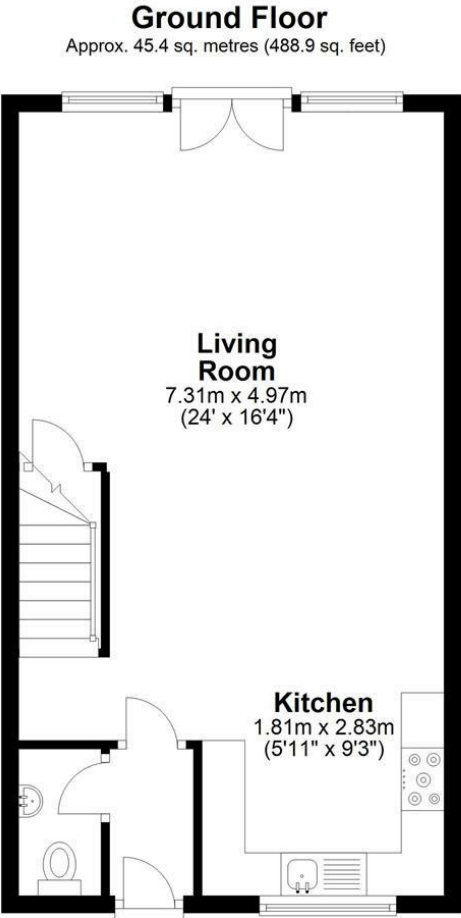
4'8" x 7'8" (1.42m x 2.34m)



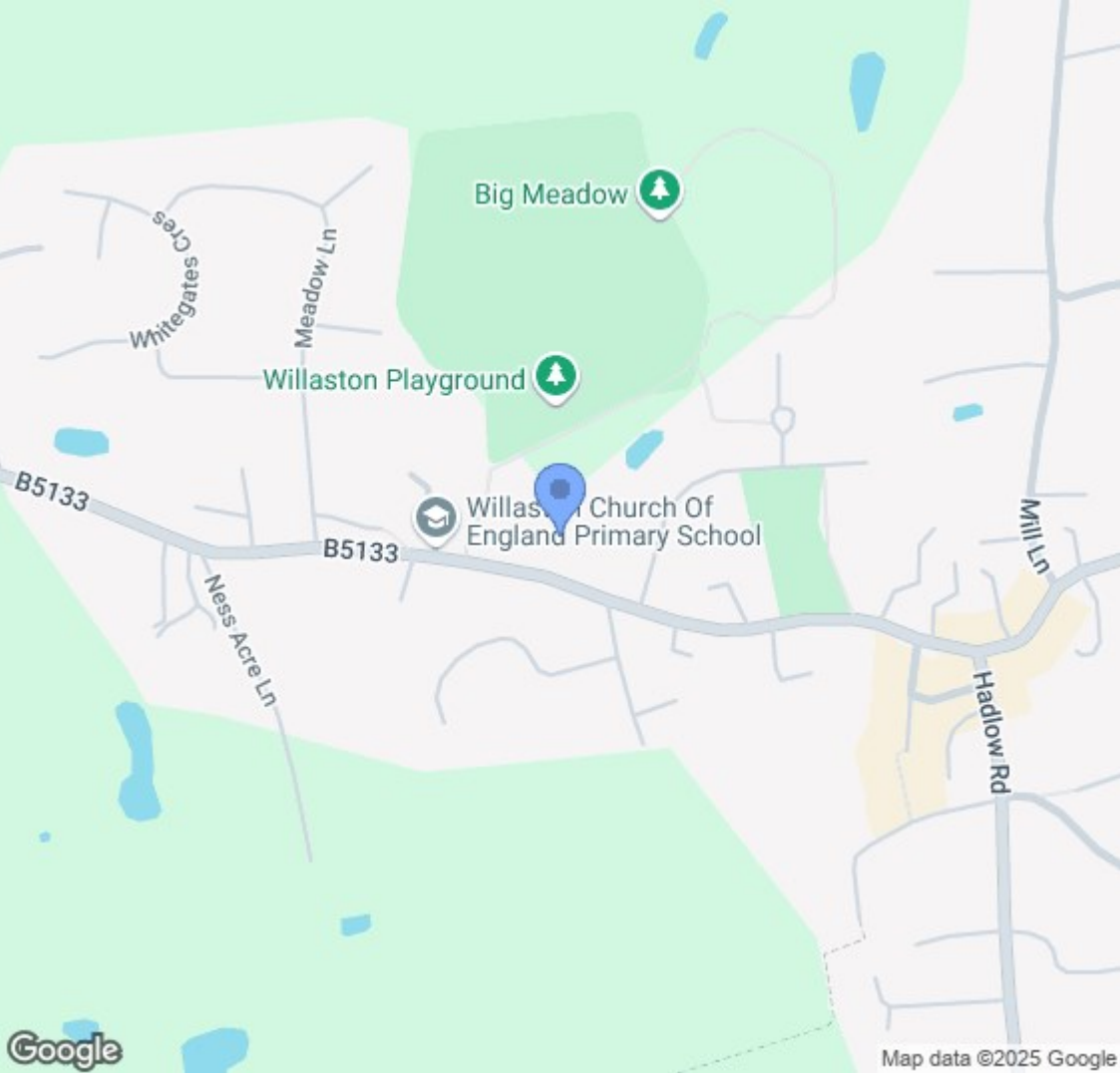
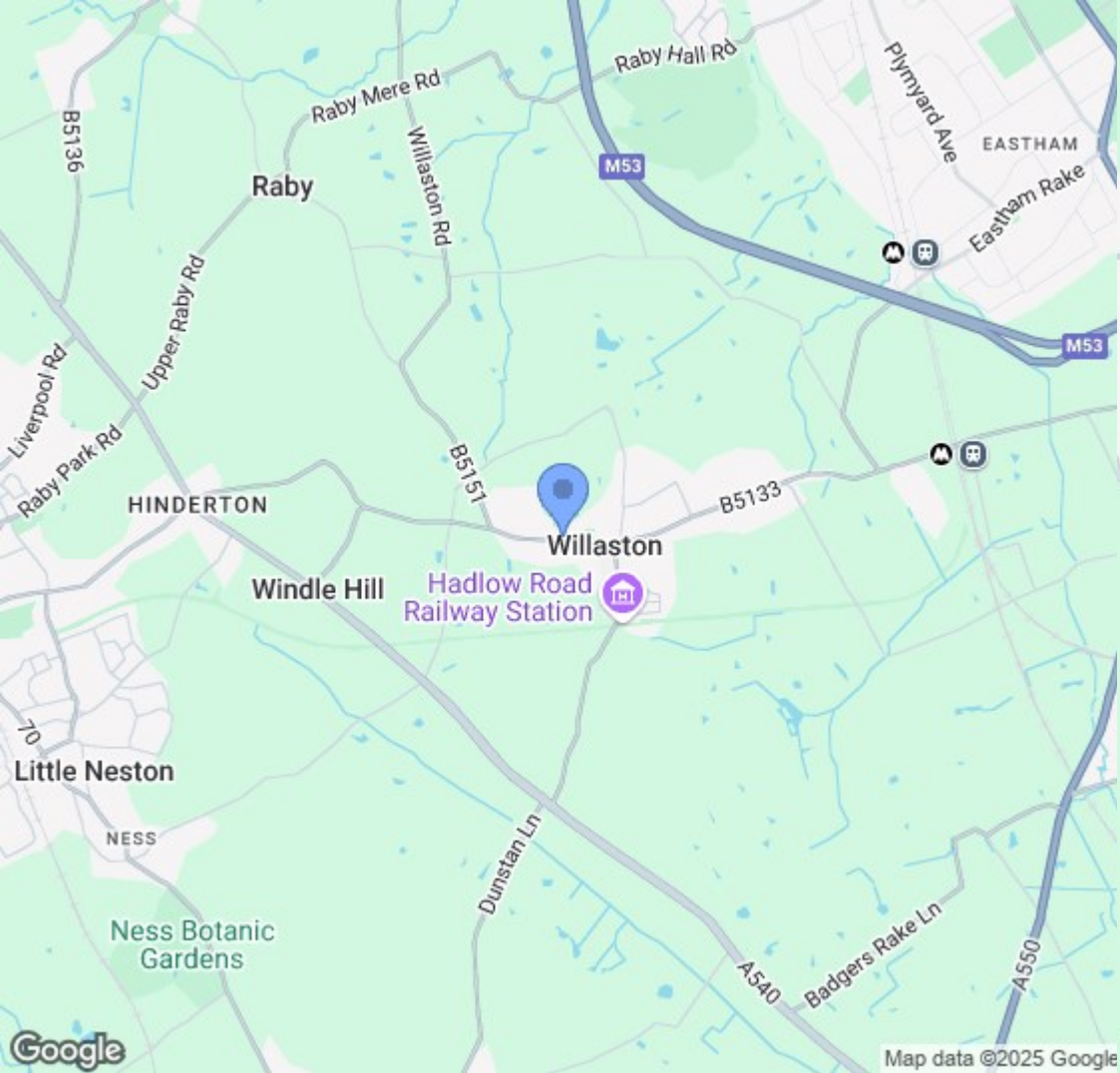


EPC & Floor Plan

Energy Efficiency Rating		
	Current	Potential
Very energy efficient - lower running costs		
(92 plus) A	79	90
(81-91) B		
(69-80) C		
(55-68) D		
(39-54) E		
(21-38) F		
(1-20) G		
Not energy efficient - higher running costs		
England & Wales		EU Directive 2002/91/EC
		



Total area: approx. 94.2 sq. metres (1013.7 sq. feet)
4 Elizabeth Cottages, Willaston, NESTON



Location Map

Constables

S A L E S & L E T T I N G S

21 High Street, Neston

South Wirral, Neston, Cheshire

www.constablesestateagents.co.uk

info@constablesestateagents.co.uk

0151 353 1333