




Constables
SALES & LETTINGS

Burton Road

Little Neston, Neston

£400,000



Constables is delighted to offer to the market this exceptional semi-detached period property in a prime position a short distance from Neston town centre. Believed to date back to 1857, the property was the original St Winifred's School and School house. It has been skilfully divided into two dwellings which both seemingly blend modern fit and finish with charming original character features.

The property briefly comprises, entrance hall, large lounge with feature fireplace and log burning stove, second reception room / dining room with second log burning stove, downstairs W/C utilizing the space under the staircase. The kitchen boasts a vaulted ceiling with velux windows, new kitchen with wide range of low and high level storage and integrated appliances.

To the first floor there are two double bedrooms the master of which enjoying a full length of built in wardrobes with media unit and a stunning en-suite shower room with floor to ceiling tiles.

Completing the first floor accommodation is a family bathroom with matching tiling and three piece suite and shower over bath.

Externally there is a landscaped garden with lawn, storage shed and patio area that is perfect for outdoor entertaining. At the front of the property there is two parking spaces.

This stunning property must be seen to appreciate the space and finish on offer. Available to purchase with no onward chain, early viewing is essential.

- Period School House Conversion
- Three Bathrooms
- Off Road Parking for Two Cars
- No Onward Chain

- Fully Renovated to an exceptional standard
- Landscaped Private Rear Garden
- Council Tax Band: C (Cheshire West & Chester)
- Two Bedrooms
- Exceptional Fit and Finish Throughout
- Tenure: Freehold

Entrance Hall

Lounge

12'01 x 14'07 (3.68m x 4.45m)

Lounge / Diner

12'02 x 14'08 (3.71m x 4.47m)

Kitchen

8'01 x 12'07 (2.46m x 3.84m)

Downstairs W/C

First Floor

Master Bedroom

14'08 x 10'08 (4.47m x 3.25m)

En-suite

5'05 x 3'06 (1.65m x 1.07m)

Second Bedroom

8'10 x 11'09 (2.69m x 3.58m)

Family Bathroom

8'11 x 5'06 (2.72m x 1.68m)

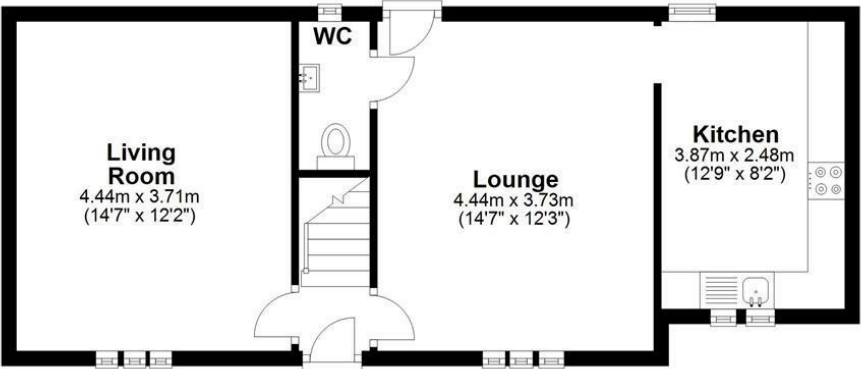




EPC & Floor Plan

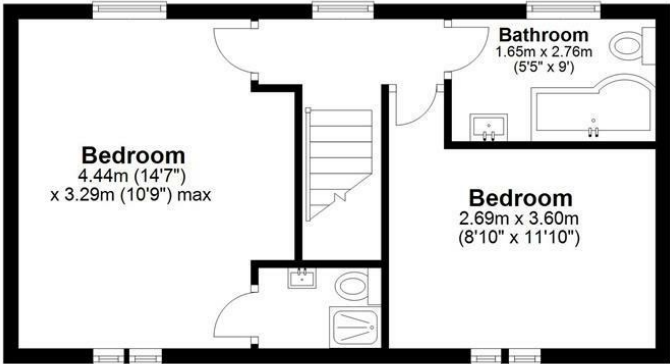
Ground Floor

Approx. 0.0 sq. metres (0.0 sq. feet)



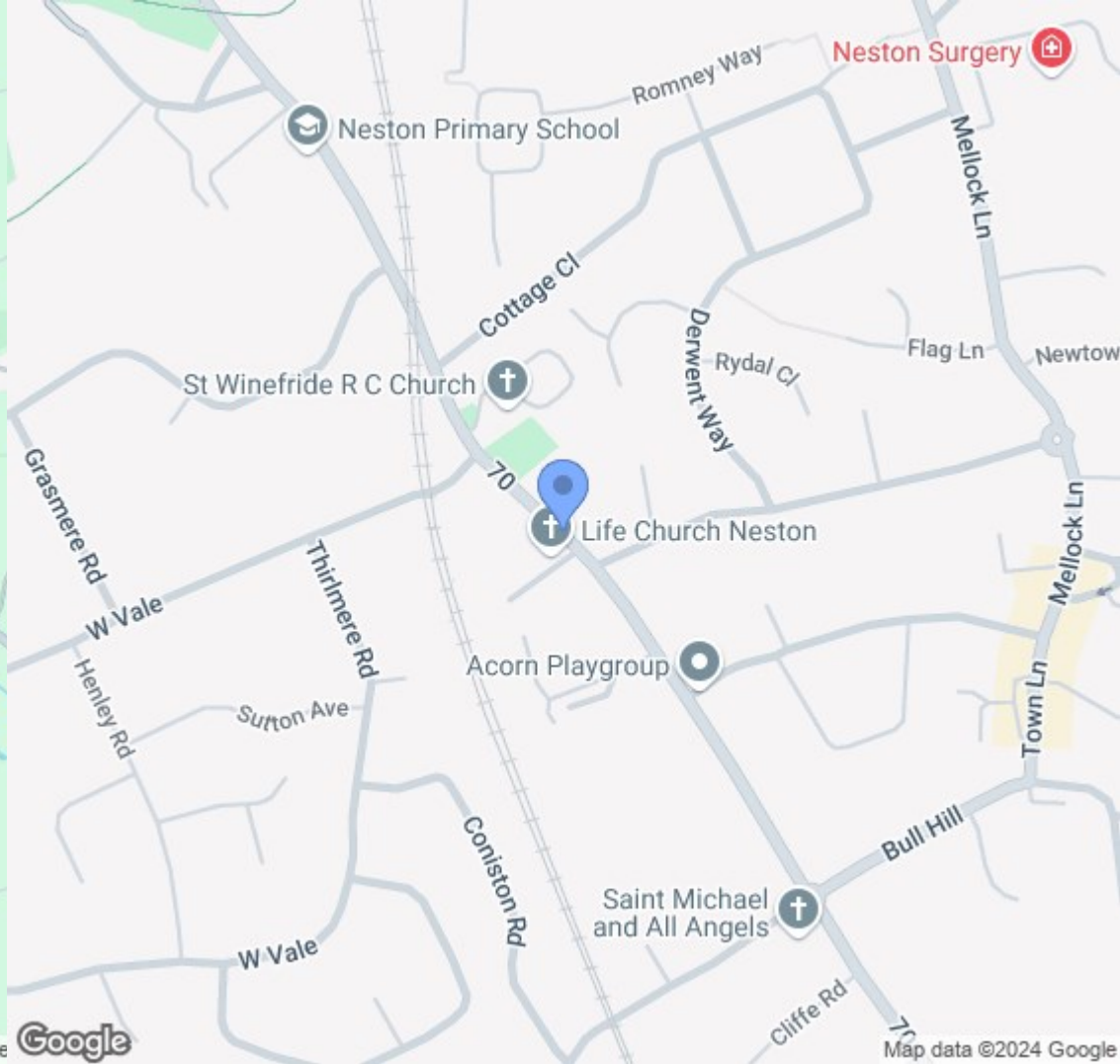
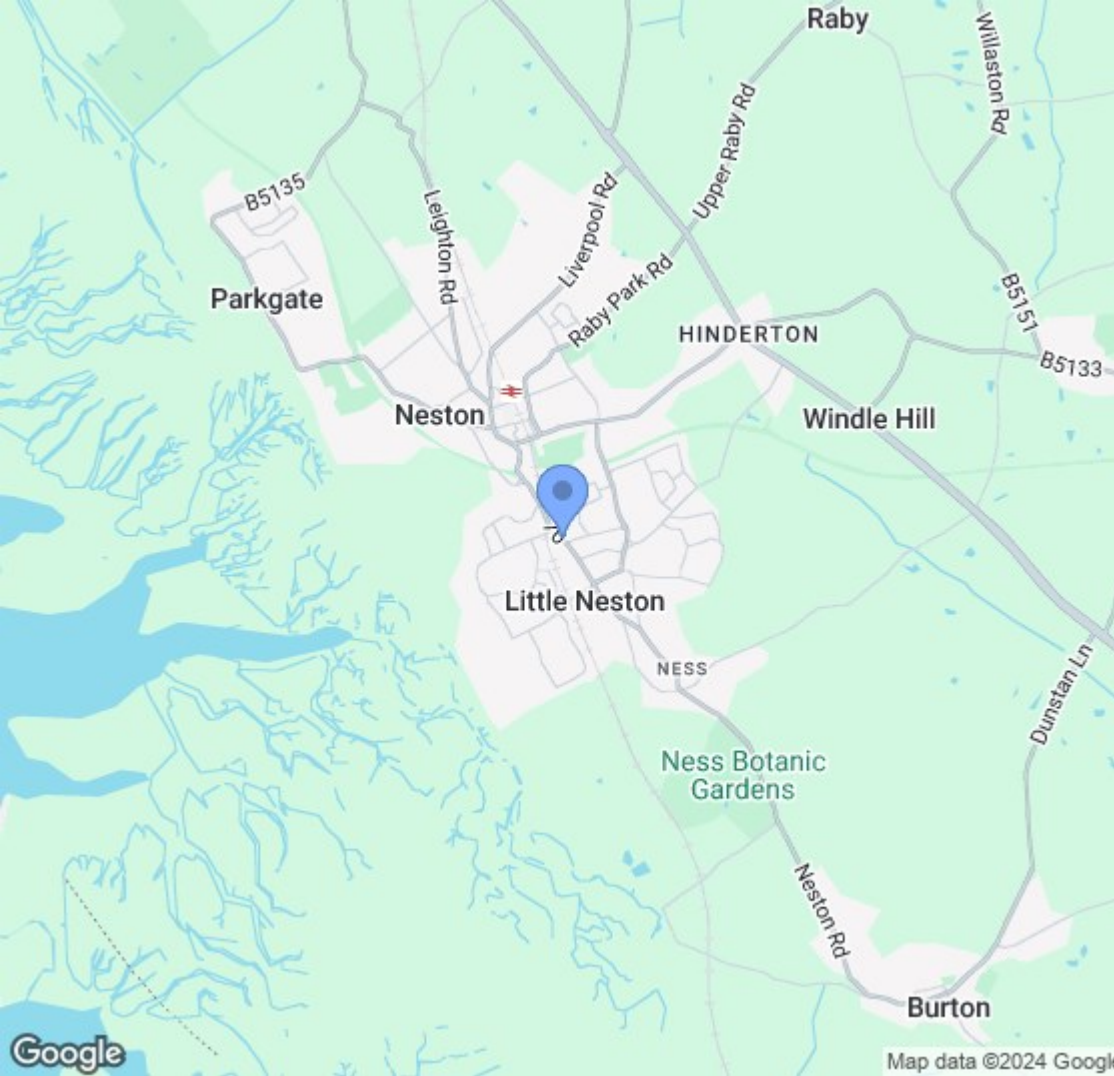
First Floor

Approx. 0.0 sq. metres (0.0 sq. feet)



Total area: approx. 0.0 sq. metres (0.0 sq. feet)

School House, Burton Road, Neston



Location Map

Constables

S A L E S & L E T T I N G S

21 High Street, Neston

South Wirral, Neston, Cheshire

www.constablesestateagents.co.uk

info@constablesestateagents.co.uk

0151 353 1333