

# DRAFT DETAILS

# Constables

SALES & LETTINGS



2



1



1



C

## 5 Oxton Lawn Apartments

£235,000



- Two Double Bedroom Apartment
- Immaculate Presentation Throughout
- Two Allocated Parking Spaces
- Gas Central Heating
- Pets Allowed in Building
- Character Building
- Highly Sought After Location
- Landscaped Communal Gardens

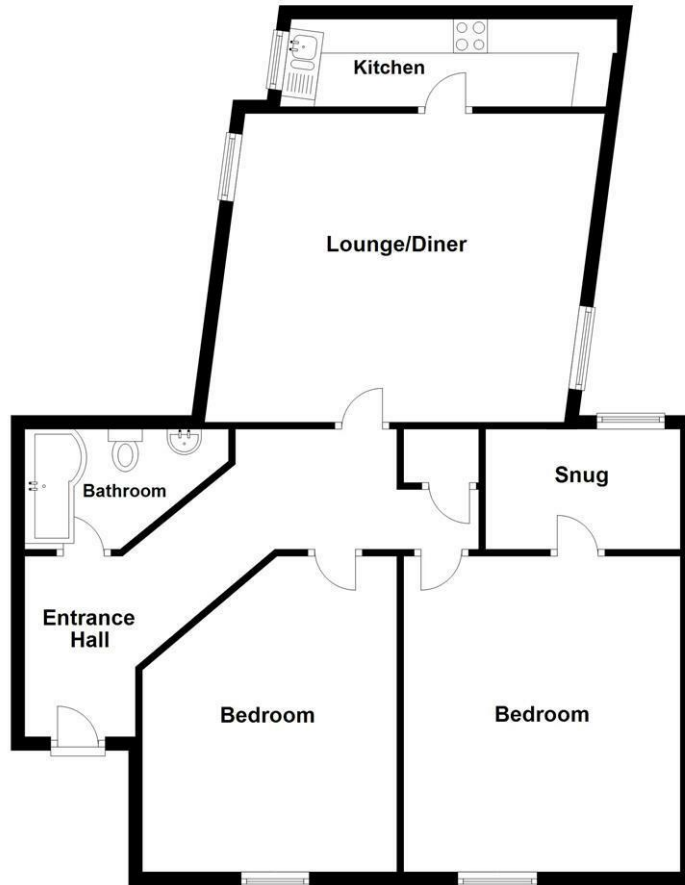
A spacious first floor apartment in the exclusive Oxton Lawn development a short distance from the heart of Oxton village. Oxton Lawn is an impressive conversion of detached period property that is set in impressive landscaped gardens.

The accommodation is immaculately presented and briefly comprising hallway, lounge-diner, a well-appointed kitchen with integrated appliances. Two large double bedrooms, one with a dressing room / study and modern fitted bathroom. Further benefitting from gas central heating, double glazing, allocated parking for two vehicles and set in beautiful grounds.

This property is perfect for a variety of buyers from working professionals to retirement buyers and needs to be viewed to be fully appreciated. Early viewing is highly recommended.

### Floor Plan

Approx. 0.0 sq. metres (0.0 sq. feet)



Total area: approx. 0.0 sq. metres (0.0 sq. feet)

**5 Oxton Lawn Apartments, 18 Rathmore Road, Prenton**

# Energy Efficiency Rating

|   | Current | Potential |
|---|---------|-----------|
| Very energy efficient - lower running costs |         |           |
| (92 plus) <b>A</b>                          |         |           |
| (81-91) <b>B</b>                            | 78      | 80        |
| (69-80) <b>C</b>                            |         |           |
| (55-68) <b>D</b>                            |         |           |
| (39-54) <b>E</b>                            |         |           |
| (21-38) <b>F</b>                            |         |           |
| (1-20) <b>G</b>                             |         |           |



**Entrance Hall**

**Lounge**  
**15'06 x 17'03**

**Kitchen**  
**15'10 x 6'04**

**Master Bedroom**  
**15'02 x 13'02**

**Dressing Room / Study**  
**9'05 x 5'09**

**Second Bedroom**  
**13'02 x 15'02**



