



Constables
SALES & LETTINGS

The Looms

Parkgate, Neston

£405,000



Welcome to this charming three-bedroom detached dorma style bungalow located in the highly sought-after area of Parkgate. Situated in The Looms, this property offers a peaceful and picturesque setting for you to call home.

This property briefly comprises, entrance hall, large front facing lounge with feature gas fireplace and archway through into the dining room, the dining room is adjacent the kitchen and has a large window out onto the rear garden, the kitchen feature a wide range of low and high level storage with under counter appliances and the main boiler, there is a bathroom with full sized bath, separate shower, wash hand basin and a separate W/C.

There are two double bedrooms to the ground floor accommodation with a further third double bedroom to the first floor that has excellent views over to the dee estuary.

Externally to the front of the property there is a large front garden, off road parking and access to the detached single garage. To the rear of the property there is a large and private corner plot garden with large paved seating area, greenhouse and raised beds to the side along with side access and a wooden shed with concrete base.

Don't miss out on the opportunity to own a piece of paradise in Parkgate. Contact us today to arrange a viewing and take the first step towards making this wonderful property your own.

- Three Bedroom Detached Dorma Bungalow
- Detached Garage
- Highly Sought After Parkgate Location
- Gas Central Heating
- Large Private Corner Plot Garden
- Double Glazed Throughout

Entrance Hall

Lounge

18'2 x 12'10 (5.54m x 3.91m)

Dining Room

10'10 x 8'09 (3.30m x 2.67m)

Kitchen

10'10 x 12'10 (3.30m x 3.91m)

Master Bedroom

10'11 x 9'4 (3.33m x 2.84m)

Second Bedroom

9'7 x 9'3 (2.92m x 2.82m)

Bathroom

6'11 x 5'04 (2.11m x 1.63m)

W/C

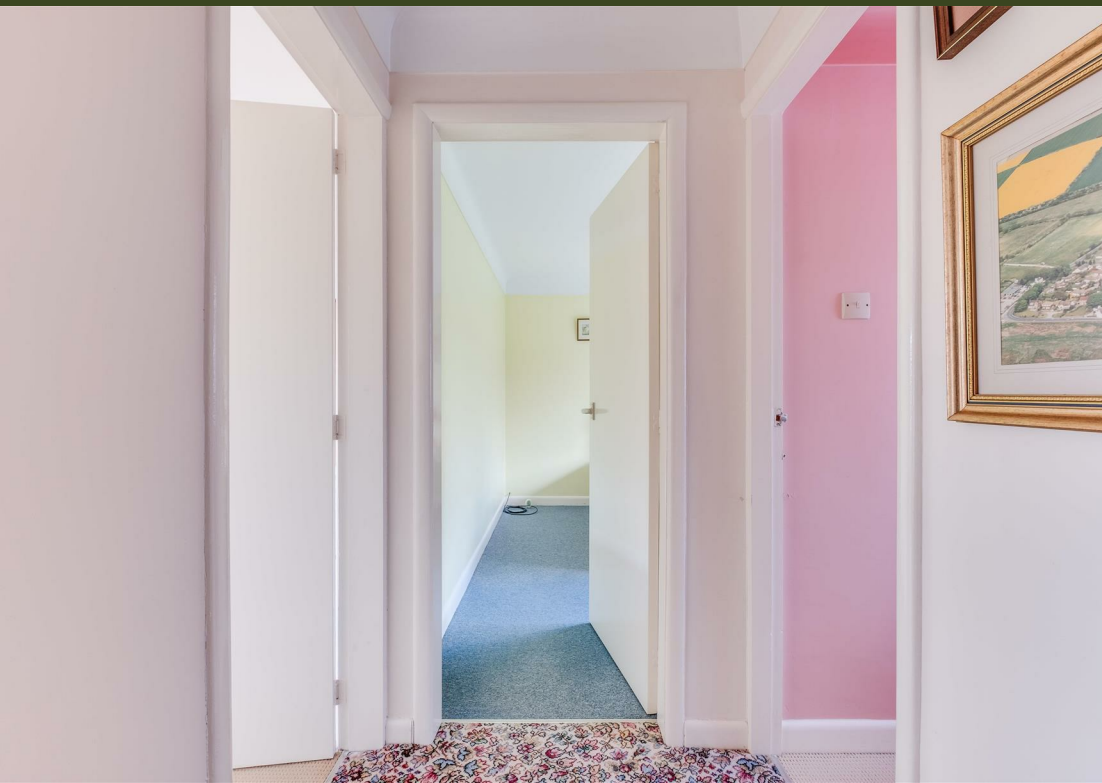
2'05 x 5'06 (0.74m x 1.68m)

First Floor

Third Bedroom

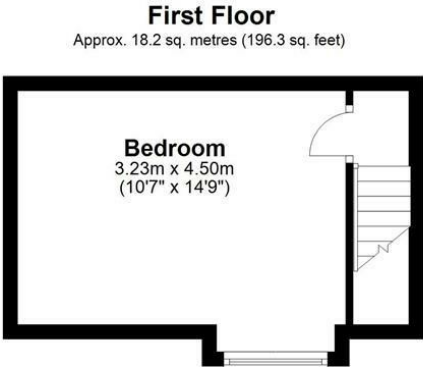
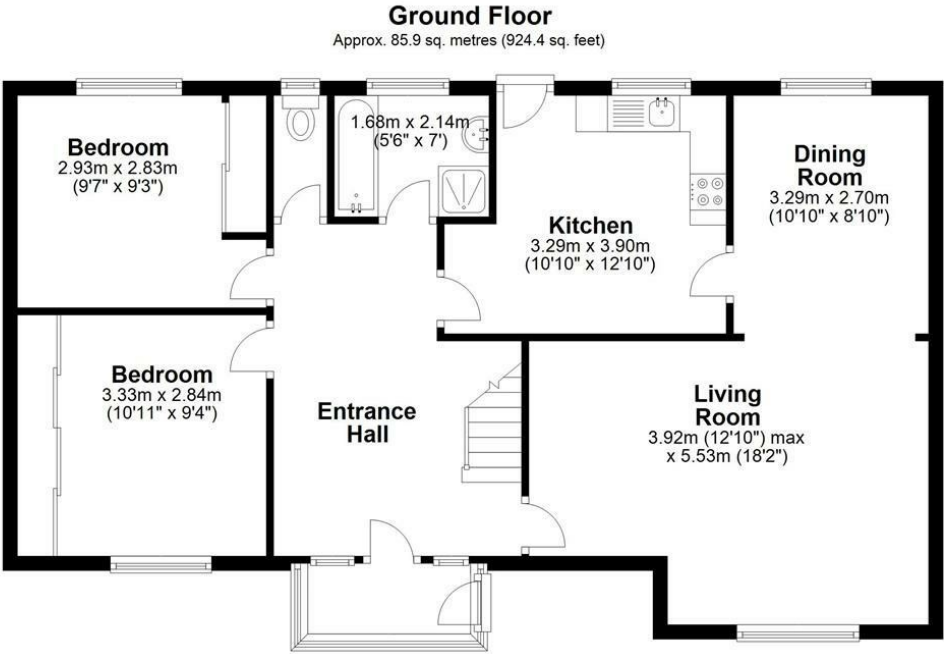
10'7 x 14'9 (3.23m x 4.50m)



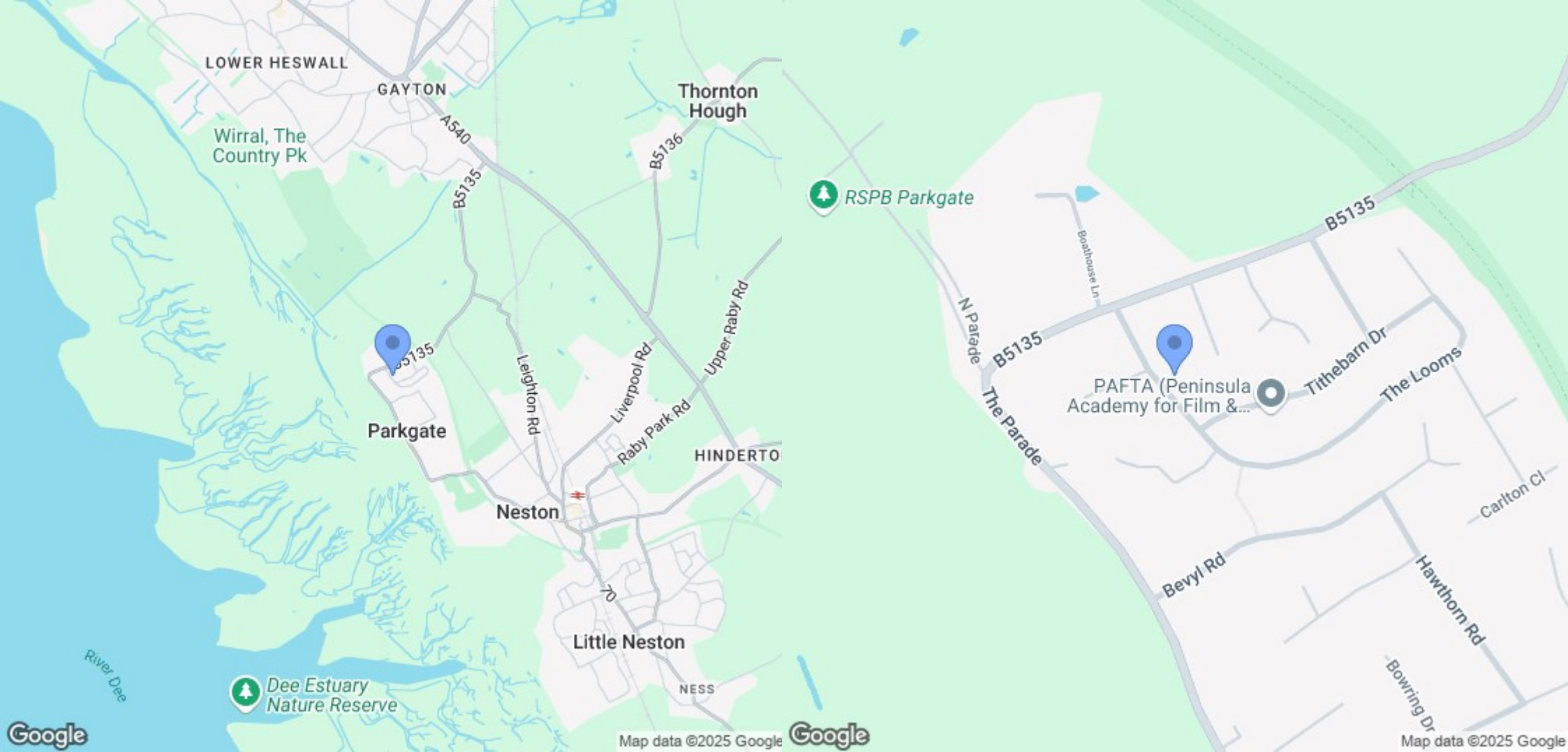


EPC & Floor Plan

| Energy Efficiency Rating | | |
|---|---------------|----------------------------|
| | Current | Potential |
| Very energy efficient - lower running costs | | |
| (92 plus) A | <div>29</div> | <div>74</div> |
| (81-91) B | | |
| (69-80) C | | |
| (55-68) D | | |
| (39-54) E | | |
| (21-38) F | | |
| (1-20) G | | |
| Not energy efficient - higher running costs | | |
| England & Wales | | EU Directive 2002/91/EC |



Total area: approx. 104.1 sq. metres (1120.7 sq. feet)
7 The Looms, Parkgate



Location Map

Constables

S A L E S & L E T T I N G S

21 High Street, Neston

South Wirral, Neston, Cheshire

www.constablesestateagents.co.uk

info@constablesestateagents.co.uk

0151 353 1333