



4 Bedrooms



1 Bathroom + WC



2 Reception Rooms



Garage



Private Garden



EPC Band - E

Council Tax

Band E: £2,800.97 2025/26

Local Authority  
Welwyn Hatfield Council



**Rosedale, Welwyn Garden City, AL7**  
**Guide Price £600,000 Freehold**



# Rosedale, Welwyn Garden City, AL7 1DR

Offering excellent potential to rejuvenate into a wonderful family home is this four bedroom detached house, with garage and off-street parking, in a sought after cul-de-sac, being sold with no onward chain.

Four Bedrooms
Detached House
Garage
Driveway
Guest WC
Utility Room
Quiet Cul-De-Sac

## Description

Spacious four-bedroom detached Home offering excellent potential and in a prime location

Offered chain free, this generously proportioned four-bedroom detached residence presents a fantastic opportunity for buyers seeking a substantial family home with scope to renovate and add value. The property features a generous lounge, a spacious kitchen/diner, a guest WC, and a separate utility room.

Upstairs, you'll find four good-sized bedrooms served by a four-piece family bathroom.

Additional benefits include a garage, ample living space throughout, and a sought-after location within the catchment area for excellent local schools. With easy access to Welwyn North mainline station, this home is ideal for commuters and families alike.

## Location

Located in a quiet residential area of Welwyn Garden City, 16 Rosedale offers excellent access to local amenities, highly regarded schools, and green open spaces. Just a short drive to Welwyn Garden City town centre and within walking distance of Welwyn North station, it provides convenient links to London and surrounding areas.

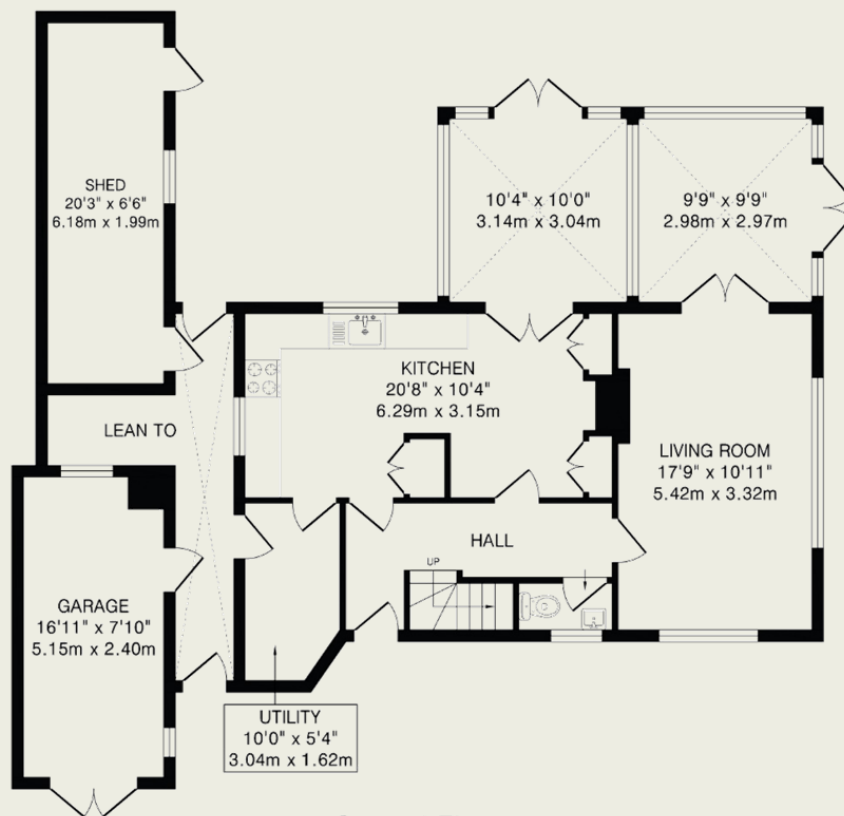




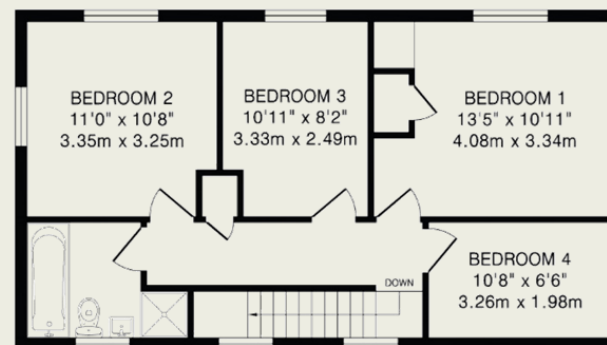


**Important Information**

These particulars do not constitute an offer or contract in whole or part. The statements contained herein are made without responsibility on the part of Ashtons or the vendors and they cannot be relied upon as representatives of fact. In respect of floor plans, these are for illustrative purposes only. The measurement and position of each element is approximate and must be viewed as such. Intending purchasers should therefore satisfy themselves by inspection or otherwise as to their correctness. The vendors do not make or give, and neither Ashtons nor any person in their employment has any authority to make or give, any representation or warranty whatsoever in relation to this property. We offer a wide range of services through third party providers including solicitors, surveyors, removal firms, mortgage providers and EPC suppliers. We receive additional payments for administering suppliers quoting software and making referrals. You are not under any obligations to use these services and it is your discretion whether you choose to deal with these parties or your own preferred supplier. You should be aware the average payment we received in 2021 equated to £48.36 per referral.



Ground Floor  
1068 sq.ft.(99.1 sq.m)approx.



First Floor  
585 sq.ft.(54.3 sq.m)approx.

TOTAL FLOOR AREA: 1387 sq.ft.(128.8 sq.m)approx.  
This floorplan is for illustration purposes only. The measurements and position of each element are approximate and must be viewed as such.