



3 Bedrooms



1 Bathroom



2 Reception Rooms



Garage and Driveway



Stunning 100ft West
Facing Rear Garden



EPC Band D

Council Tax

Band E

- £2,800.97 2025-2026

Local Authority

Welwyn/Hatfield

Agents Note: parking
restrictions 9-11am, Mon-Sat



Handside Lane, Welwyn Garden City, AL8

Guide Price £625,000.00 Freehold

Handside Lane, Welwyn Garden City, AL8

A traditional, spacious family home with a particularly beautiful, secluded rear garden and a garage, located on the desirable West Side of Welwyn Garden City.

- 🏠 Spacious Family Home
- 🏠 Semi-Detached
- 🏠 3 Bedrooms
- 🏠 2 Generous Reception Rooms
- 🏠 100ft West Facing Rear Garden
- 🏠 Garage and Driveway
- 🏠 Desirable West Side Location

Description

A welcoming entrance hall presents doors to three spacious rooms on the ground floor: a dining room with characterful fireplace; a large living room at the rear and a modern, fitted kitchen. There are also two useful storage cupboards in the hallway.

Upstairs, three bright bedrooms are served by a bathroom and separate W/C. The largest bedroom benefits from a range of fitted furniture, including wardrobes.

The large rear garden has a patio adjacent to the house and is otherwise laid to lawn with attractive flower beds. Mature trees give it a delightful private aspect and there are two sheds and a greenhouse. Happily, the property also comes with a sizeable garage.

Location

Handside Lane is located on the popular West Side of Welwyn Garden City. The property gives access to the popular Stanborough and Applecroft schools, with local shopping amenities a short walk away. Town centre amenities including: Gosling Sports Centre, an array of cafes and restaurants, John Lewis, Waitrose, The Howard Shopping Centre and a mainline rail station (London Kings Cross 25 minutes) are all within walking distance. Major road links (A1M motorway) and the popular Hatfield Galleria shopping centre, are a short drive away.





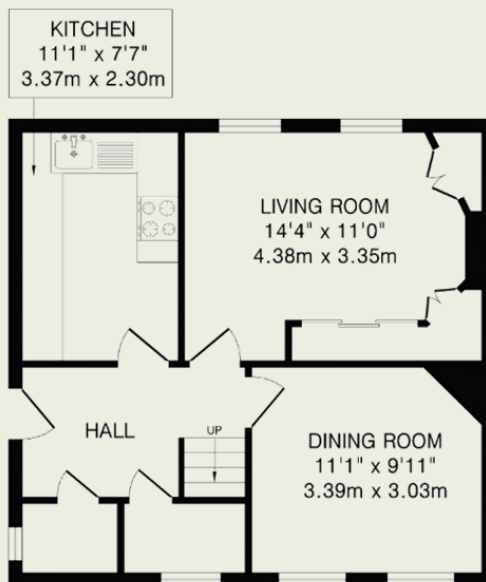
Important Information

These particulars do not constitute an offer or contract in whole or part. The statements contained herein are made without responsibility on the part of Ashtons or the vendors and they cannot be relied upon as representatives of fact. In respect of floor plans, these are for illustrative purposes only. The measurement and position of each element is approximate and must be viewed as such. Intending purchasers should therefore satisfy themselves by inspection or otherwise as to their correctness. The vendors do not make or give, and neither Ashtons nor any person in their employment has any authority to make or give, any representation or warranty whatsoever in relation to this property. We offer a wide range of services through third party providers including solicitors, surveyors, removal firms, mortgage providers and EPC suppliers. We receive additional payments for administering suppliers quoting software and making referrals. You are not under any obligations to use these services and it is your discretion whether you choose to deal with these parties or your own preferred supplier. You should be aware the average payment we received in 2021 equated to £48.36 per referral.

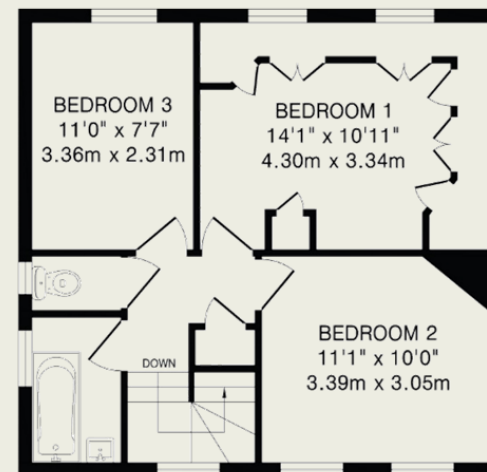


Garage

121 sq.ft.(11.2 sq.m)approx. 474 sq.ft.(44.0 sq.m)approx.



Ground Floor



First Floor

474 sq.ft.(44.0 sq.m)approx.

TOTAL FLOOR AREA: 948 sq.ft.(88.0 sq.m)approx.

This floorplan is for illustration purposes only. The measurements and position of each element are approximate and must be viewed as such.