



3 Bedrooms



2 Bath/Shower Rooms



1 Reception Room



Allocated Off-Street
Parking



Rear Courtyard Garden



EPC Band D

Council Tax

Band E
- £2,898.23 2025-2026

Local Authority
Welwyn Hatfield Borough
Council



High Street, Welwyn, AL6
Guide Price £550,000.00 Freehold

High Street, Welwyn, AL6

A stunning three bedroom cottage situated in the heart of Welwyn Village, with well-balanced accommodation, a private rear courtyard and allocated off-street parking.

🏡 Charming, Stunning 3 Bedroom Cottage

🏡 Large Open Plan Living/Dining

🏡 Stylish Kitchen With Breakfast Island

🏡 Utility Room

🏡 En-Suite To Principal Bedroom

🏡 Allocated Off-Street Parking

🏡 Heart of Welwyn Village

Description

Nestled in the heart of the sought-after Welwyn Village, this charming three bedroom terraced cottage seamlessly blends character with contemporary living.

Thoughtfully designed, the ground floor boasts a generous open-plan family space ideal for entertaining or relaxing with endless versatility in layout and use. At its heart, a sleek, modern kitchen features ample storage and a stylish breakfast island, perfect for casual dining. A handy utility room at the rear leads out through French doors to a private courtyard garden, your own tranquil retreat.

Upstairs, three well-proportioned bedrooms offer comfort and balance, with the principal bedroom enjoying the added luxury of an en-suite shower room. A modern family bathroom serves the remaining two bedrooms, designed with both function and style in mind.

Externally, the property benefits from allocated parking at the rear, while the village's array of High Street amenities are just a short stroll away, bringing convenience right to your doorstep.

Location

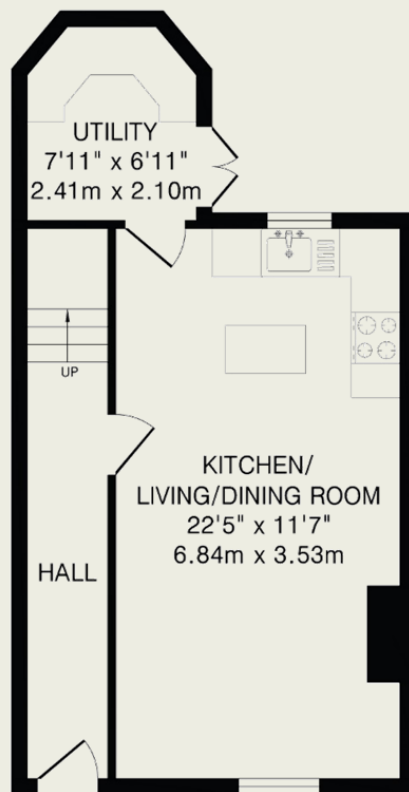
Located in the centre of Old Welwyn with its Norman church, conservation area and wealth of boutique shops, restaurants and many other facilities. Commuting to London could not be easier with easy access to both the A1 (M) junction 6 and Welwyn North train mainline station (London Kings Cross 28 minutes by fast train).





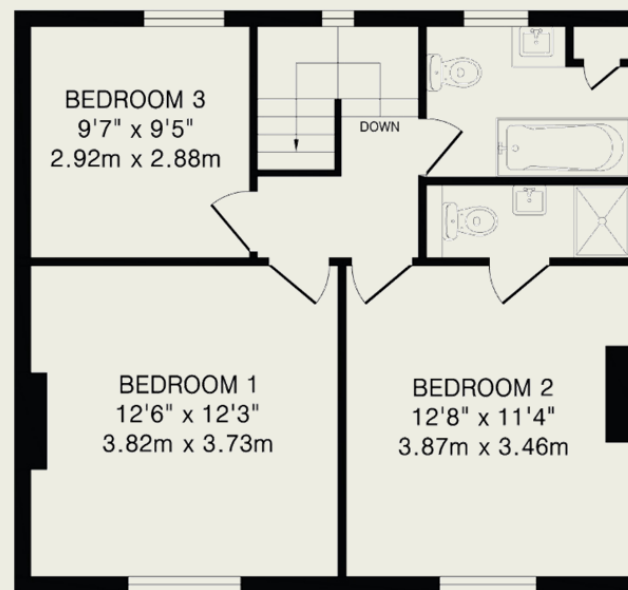
Important Information

These particulars do not constitute an offer or contract in whole or part. The statements contained herein are made without responsibility on the part of Ashtons or the vendors and they cannot be relied upon as representatives of fact. In respect of floor plans, these are for illustrative purposes only. The measurement and position of each element is approximate and must be viewed as such. Intending purchasers should therefore satisfy themselves by inspection or otherwise as to their correctness. The vendors do not make or give, and neither Ashtons nor any person in their employment has any authority to make or give, any representation or warranty whatsoever in relation to this property. We offer a wide range of services through third party providers including solicitors, surveyors, removal firms, mortgage providers and EPC suppliers. We receive additional payments for administering suppliers quoting software and making referrals. You are not under any obligations to use these services and it is your discretion whether you choose to deal with these parties or your own preferred supplier. You should be aware the average payment we received in 2021 equated to £48.36 per referral.



Ground Floor

394 sq.ft.(36.6 sq.m)approx.



First Floor

549 sq.ft.(50.9 sq.m)approx.

TOTAL FLOOR AREA: 943 sq.ft.(87.5 sq.m)approx.

This floorplan is for illustration purposes only. The measurements and position of each element are approximate and must be viewed as such.