



4 Bedrooms



2 Bath/Shower Room + WC



2 Reception Rooms



Garage & Off-Street
Parking



South Facing Rear Garden



EPC Band TBC

Council Tax

Band: E £2,822.24 (2025-2026)

Local Authority
East Hertfordshire



Abbots Close, Datchworth, SG3 6TA
Guide Price £750,000 Freehold

Abbots Close, Datchworth, SG3 6TA

This immaculately presented, thoughtfully extended, detached family home with exquisite kerb appeal, boasts four spacious bedrooms, ample living space and superior finishes throughout.

- 🏡 Immaculate Family Home
- 🏡 Four Bedrooms
- 🏡 Stylish Main Bedroom Suite + En-Suite Shower/Dressing Room
- 🏡 High Specification Fitted Kitchen
- 🏡 Large, Bright Living Room
- 🏡 Downstairs W/C

Description

Firstly, a smart, welcoming entrance hall presents a W/C to the left, a useful cloakroom cupboard and access to the adjoining garage. Ahead, lies a bright, open lounge with broad patio doors across the back, flooding the impressive room with natural light and providing a wonderful view of the attractive, secluded rear garden which is mainly laid to lawn with a delightful, sunny patio. Double doors to the right provide access to the generous dining room and a second dining area to the left flows seamlessly into the bright, modern kitchen with high-end, integrated appliances, granite worktops a range of stylish units and external access to the side of the property. The kitchen is located in the extended part of the home and benefits from triple aspect views of the beautiful rear garden. Upstairs, four bright, generous bedrooms are served by a fully-tiled, smart family bathroom. The main bedroom suite is a terrific size, benefits from fitted wardrobes along the entire length of one wall and boasts an elegant en-suite shower/dressing room. Externally, the house reflects just how beautifully it is presented and looked after internally. It has a particularly attractive frontage with room to park a vehicle on the drive.

Location

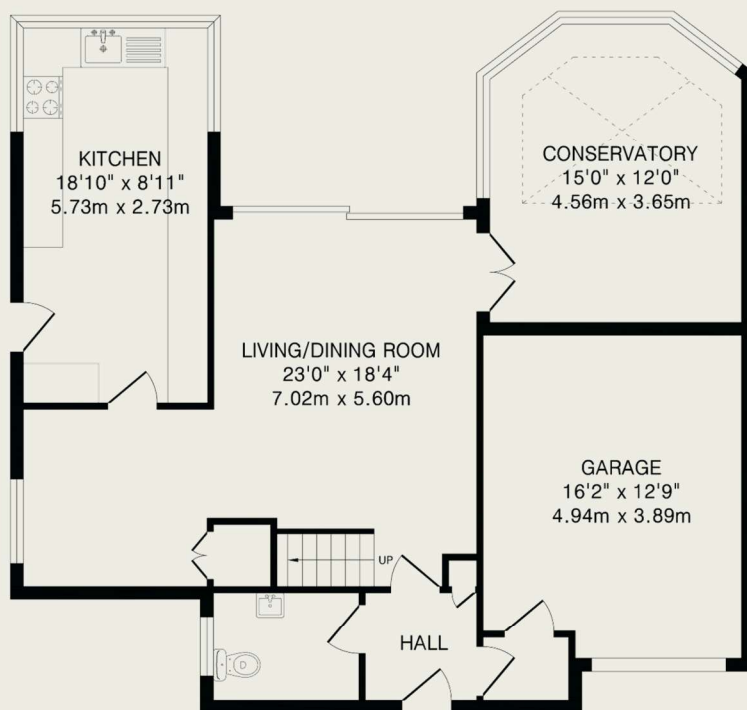
Datchworth is a highly regarded, sought after village with a general store, post office, locally renowned coffee shop and two public houses; one of which, The Tilbury, offers relaxed fine dining and great classic pub food. Happily, within easy walking distance, is the renowned Turkey Farm, a remarkable open, recreational space with a delightful rural aspect and children's playground, offering access to beautiful countryside walks - fabulous for dog walking and walkers generally! The popular Datchworth Bowls Club and the village hall are located in this part of the village too.



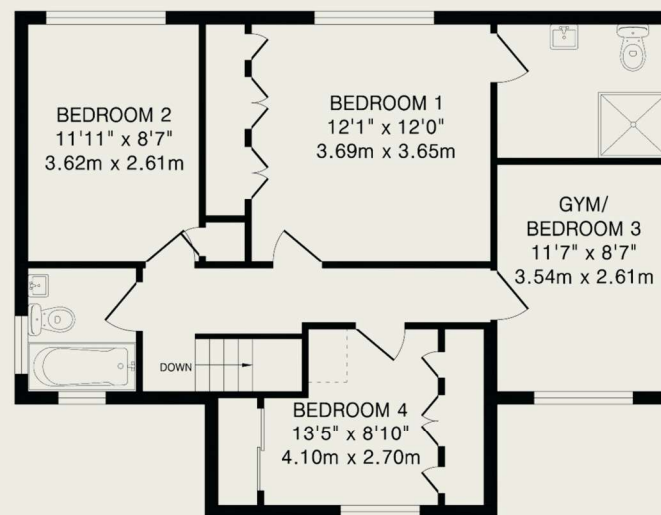


Important Information

These particulars do not constitute an offer or contract in whole or part. The statements contained herein are made without responsibility on the part of Ashtons or the vendors and they cannot be relied upon as representatives of fact. In respect of floor plans, these are for illustrative purposes only. The measurement and position of each element is approximate and must be viewed as such. Intending purchasers should therefore satisfy themselves by inspection or otherwise as to their correctness. The vendors do not make or give, and neither Ashtons nor any person in their employment has any authority to make or give, any representation or warranty whatsoever in relation to this property. We offer a wide range of services through third party providers including solicitors, surveyors, removal firms, mortgage providers and EPC suppliers. We receive additional payments for administering suppliers quoting software and making referrals. You are not under any obligations to use these services and it is your discretion whether you choose to deal with these parties or your own preferred supplier. You should be aware the average payment we received in 2021 equated to £48.36 per referral.



Ground Floor
997 sq.ft.(92.5 sq.m)approx.



First Floor
665 sq.ft.(61.8 sq.m)approx.

TOTAL FLOOR AREA: 1662 sq.ft.(154.3 sq.m)approx.
This floorplan is for illustration purposes only. The measurements and position of each element are approximate and must be viewed as such.