

Layton Street,
Welwyn Garden City,
AL7 4FE

 2 Bedrooms

 2 Bath/Shower Rooms

 1 Reception Room

 Ample Parking

 Communal

 EPC Band C

Council Tax
Band: C – £2,037.07 (2025-2026)

Service Charge: £750 pa.
(no ground rent as share of freehold)

Guide Price
£240,000
Share of Freehold

 **ashtons**
for life's great moves



A well presented ground floor apartment, featuring generous accommodation, including an en-suite shower room to the largest bedroom and the benefit of a share of the freehold.

Description

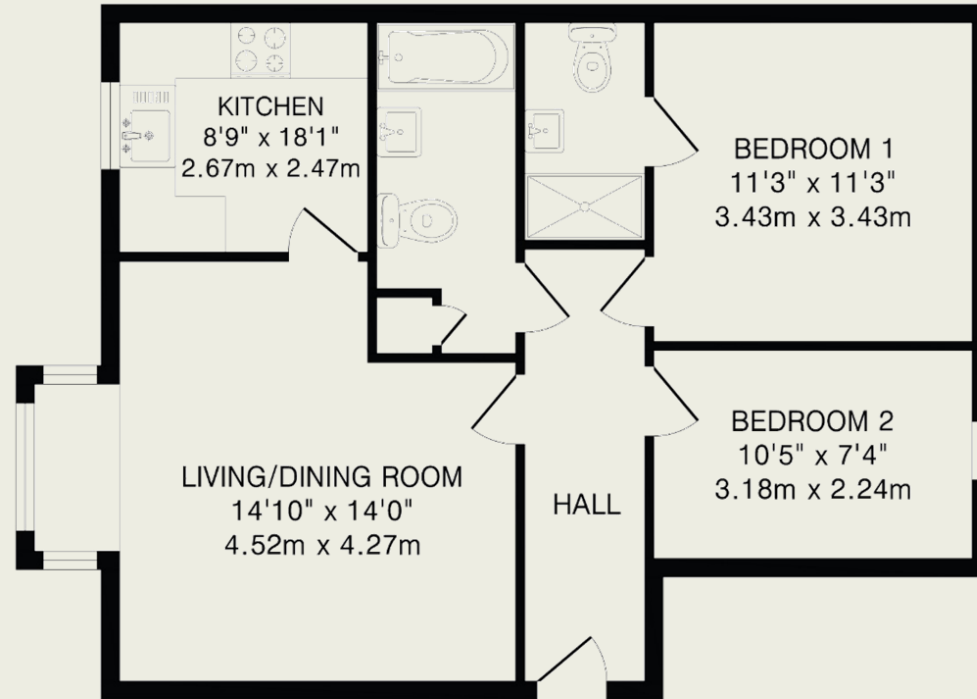
This bright, spacious apartment boasts a large living/dining room with a charming, sunny window seat and a separate fitted kitchen.

The largest bedroom benefits from an en-suite shower room and the second bedroom has some useful fitted cupboards.

The property also has the additional benefit of being share of freehold.

Location

Layton Street is conveniently located within easy access to the town centre and local amenities which include the Howard Centre, John Lewis, Sainsburys and the Mainline Railway Station (London to Kings Cross 28 minutes).



TOTAL FLOOR AREA: 669 sq.ft.(62.1 sq.m)approx.

This floorplan is for illustration purposes only. The measurements and position of each element are approximate and must be viewed as such.

Important Information

These particulars do not constitute an offer or contract in whole or part. The statements contained herein are made without responsibility on the part of Ashtons or the vendors and they cannot be relied upon as representatives of fact. In respect of floor plans, these are for illustrative purposes only. The measurement and position of each element is approximate and must be viewed as such. Intending purchasers should therefore satisfy themselves by inspection or otherwise as to their correctness. The vendors do not make or give, and neither Ashtons nor any person in their employment has any authority to make or give, any representation or warranty whatsoever in relation to this property.

We offer a wide range of services through third-party providers including solicitors, surveyors, removal firms, mortgage providers and EPC suppliers. We receive additional payments for administering suppliers quoting software and making referrals. You are not under any obligation to use these services and it is your discretion whether you choose to deal with these parties or your own preferred supplier. You should be aware the average payment we received in 2021 equated to £48.36 per referral.