



4 Bedrooms



2 Bath/Shower Room  
1 Cloakroom



4 Reception Rooms



Driveway



Private Rear Garden



EPC Band D

Council Tax

Band F  
- £3,310.24 2025-2026

Local Authority  
Welwyn/Hatfield

 **ashtons**  
for life's great moves

Assured  
Move   
from  
ashtons

Gresley Close, Welwyn Garden City, AL8 7QA  
Asking Price £725,000.00 Freehold



# Gresley Close, Welwyn Garden City, Hertfordshire, AL8 7QA

A spacious, detached family home located on the desirable west side of Welwyn Garden City.

🏡	Spacious Family Home
🏡	Detached
🏡	4 Bedrooms
🏡	En-Suite Shower Room
🏡	4 Reception Rooms
🏡	Parking for 3 Vehicles
🏡	Short Walk to Town Centre & Station

## Description

The ground floor boasts four reception rooms, including a spacious living room and a large, bright conservatory. The accommodation has a family-orientated layout; the conservatory can be accessed from both the kitchen and the adjacent dining room at the rear of the house and double doors lead from the dining room into the lounge.

Upstairs, there is a modern family bathroom and four well-proportioned bedrooms, all with fitted wardrobes. The principal bedroom enjoys the luxury of an en-suite shower room too.

The pleasant rear garden is mainly laid to lawn and has a sizeable patio. At the front, a driveway provides parking for three vehicles.

## Location

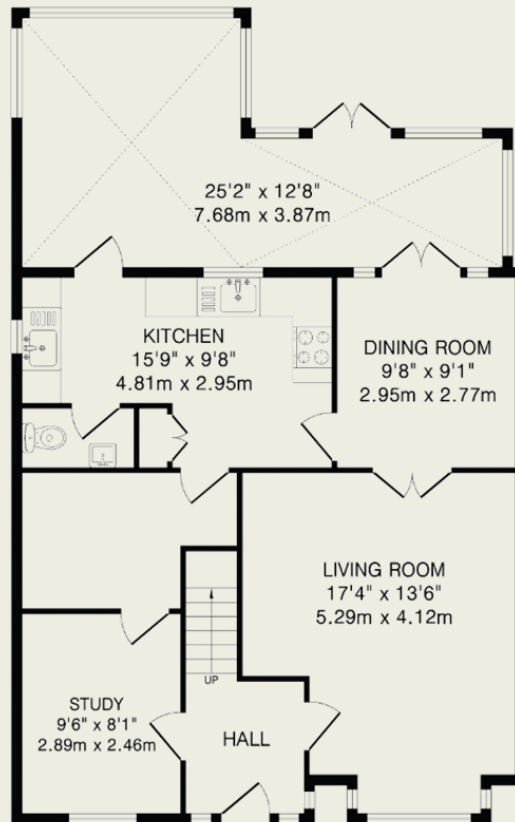
Gresley Close is located in the heart of the desirable 'West Side', within easy reach of Templewood Primary School and a short walk from the town centre's extensive amenities, including John Lewis, the Howard Shopping Centre and mainline rail services to London.



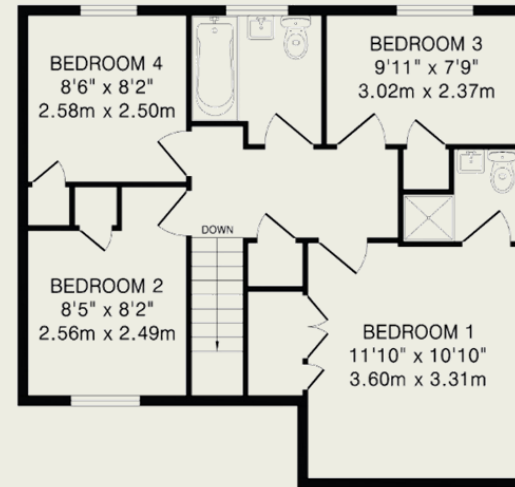


**Important Information**

These particulars do not constitute an offer or contract in whole or part. The statements contained herein are made without responsibility on the part of Ashtons or the vendors and they cannot be relied upon as representatives of fact. In respect of floor plans, these are for illustrative purposes only. The measurement and position of each element is approximate and must be viewed as such. Intending purchasers should therefore satisfy themselves by inspection or otherwise as to their correctness. The vendors do not make or give, and neither Ashtons nor any person in their employment has any authority to make or give, any representation or warranty whatsoever in relation to this property. We offer a wide range of services through third party providers including solicitors, surveyors, removal firms, mortgage providers and EPC suppliers. We receive additional payments for administering suppliers quoting software and making referrals. You are not under any obligations to use these services and it is your discretion whether you choose to deal with these parties or your own preferred supplier. You should be aware the average payment we received in 2021 equated to £48.36 per referral.



Ground Floor  
919 sq.ft.(85.3 sq.m)approx.



First Floor  
532 sq.ft.(49.4 sq.m)approx.

TOTAL FLOOR AREA: 1451 sq.ft.(134.7 sq.m)approx.

This floorplan is for illustration purposes only. The measurements and position of each element are approximate and must be viewed as such.