



4 Bedrooms



1 Bathroom



2 Reception Rooms



On-Street Parking



Large Rear Garden



EPC Band C

Council Tax

Band D
- £2,291.70 Apr 25/Mar 26

Local Authority
Welwyn Hatfield



Tilecroft, Welwyn Garden City, Hertfordshire, AL8 7QY
Offers in Excess of £563,500.00 Freehold

Tilecroft, Welwyn Garden City, Hertfordshire, AL8 7QY

This spacious, very well presented four bedroom family home with attractive gardens, is close to local shops and popular schooling.

🏡 Spacious Family Home

🏡 Semi-Detached

🏡 4 Bedrooms

🏡 Spacious Living Room

🏡 Large Kitchen/Diner

🏡 Conservatory

🏡 Family Bathroom

Description

A welcoming entrance hall presents doors to both the large, dual-aspect living room and the spacious kitchen/diner. The living room features a delightful electric wood-burning style stove and a large, sunny conservatory is accessed from the far end of this room. The conservatory leads to a large, attractive rear garden as does the kitchen/diner.

Upstairs, all four bedrooms benefit from fitted wardrobes and are served by a fully tiled modern family bathroom.

Location

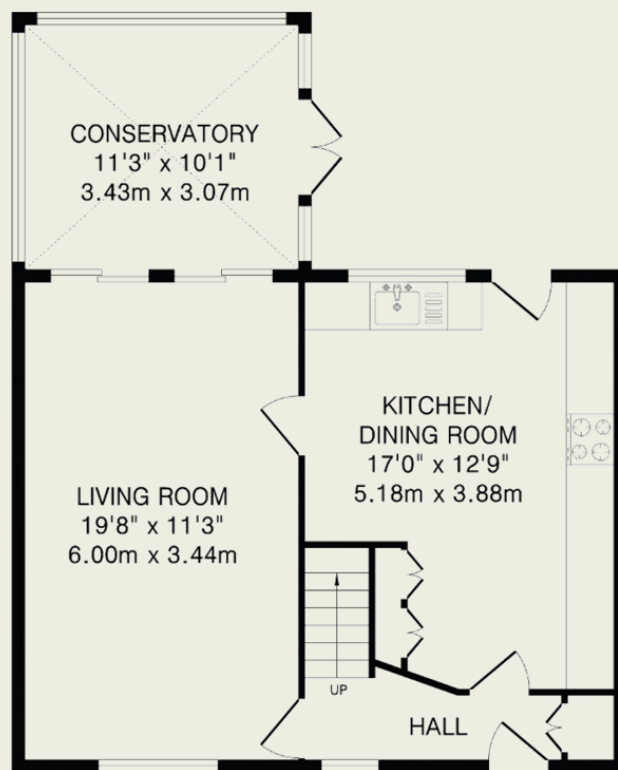
Tilecroft is located on the sought after west side of Welwyn Garden City, close to Sherrards Wood, beautiful countryside walks and popular primary and secondary schooling. Local shops, including a mini supermarket and newsagent, are conveniently within walking distance. The main town centre amenities are just a short drive or bus ride away and include the John Lewis department store, Waitrose, Sainsbury's and the Howard Shopping Centre as well as the mainline train station (London Kings Cross 25 minutes).





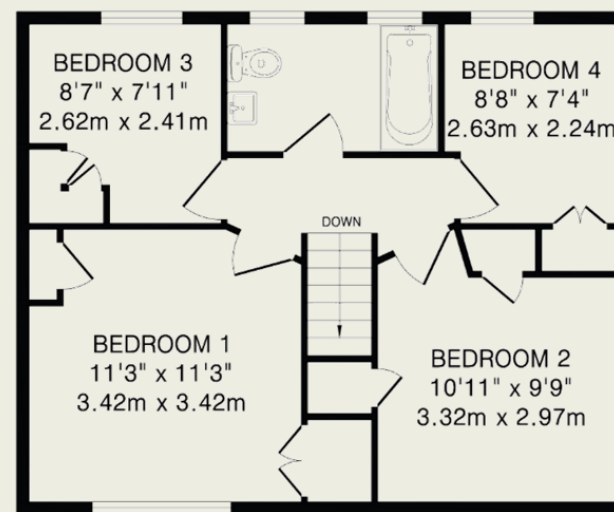
Important Information

These particulars do not constitute an offer or contract in whole or part. The statements contained herein are made without responsibility on the part of Ashtons or the vendors and they cannot be relied upon as representatives of fact. In respect of floor plans, these are for illustrative purposes only. The measurement and position of each element is approximate and must be viewed as such. Intending purchasers should therefore satisfy themselves by inspection or otherwise as to their correctness. The vendors do not make or give, and neither Ashtons nor any person in their employment has any authority to make or give, any representation or warranty whatsoever in relation to this property. We offer a wide range of services through third party providers including solicitors, surveyors, removal firms, mortgage providers and EPC suppliers. We receive additional payments for administering suppliers quoting software and making referrals. You are not under any obligations to use these services and it is your discretion whether you choose to deal with these parties or your own preferred supplier. You should be aware the average payment we received in 2021 equated to £48.36 per referral.



Ground Floor

598 sq.ft.(55.5 sq.m)approx.



First Floor

478 sq.ft.(44.4 sq.m)approx.

TOTAL FLOOR AREA: 1076 sq.ft.(99.9 sq.m)approx.

This floorplan is for illustration purposes only. The measurements and position of each element are approximate and must be viewed as such.