



Hollybush Lane,
Harpenden,
Hertfordshire, AL5

 2 Bedrooms

 1 Bathroom

 2 Reception Rooms

 Allocated Parking

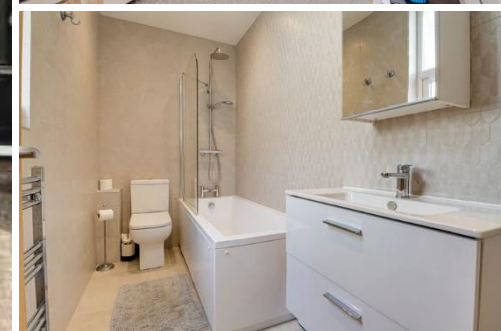
 Communal Grounds

 EPC Band D

Council Tax
Band: B – £1,821.99 (25/26)
Lease Remaining - 994 years
Service Charge - Circa £600pa

Guide Price
£475,000 Share of
Freehold

 **ashtons**
for life's great moves



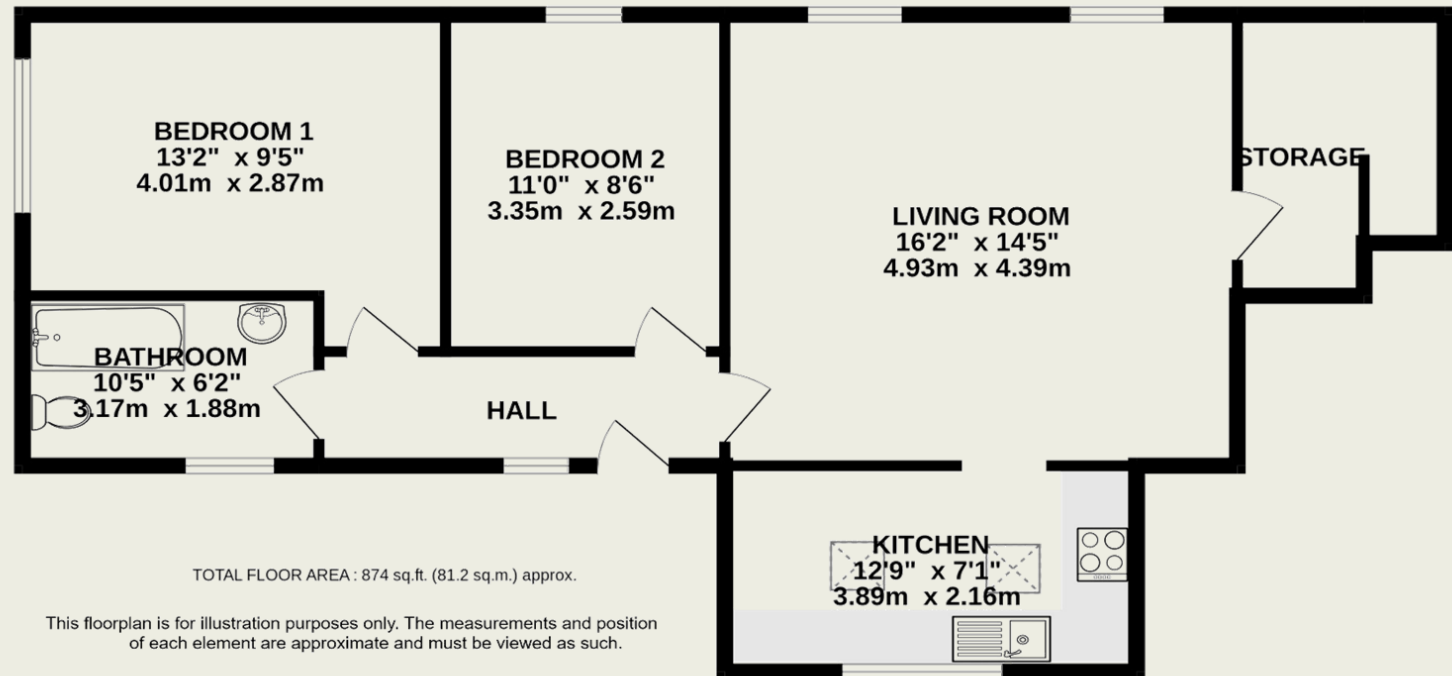
Beautifully presented two bedroom Ground floor maisonette situated in the desirable Poets area. Within 0.5 of a mile from Harpenden Train Station.

Description

This beautifully presented two-bedroom ground floor maisonette is well suited to professionals, couples, and young families alike. Accessed via its own private entrance, the home opens into a thoughtfully arranged interior. The principal bedroom offers generous space and ample storage options, while the second bedroom is equally well-proportioned—both served by a modern family bathroom. At the heart of the property lies a stylish and welcoming living/dining area, which flows effortlessly into a contemporary open-plan kitchen. Featuring integrated appliances and elegant Quartz worktops, the kitchen is both functional and refined, with views overlooking the peaceful communal gardens. Further benefits include private resident parking to the front and convenient side access for bins. This maisonette presents a rare opportunity to acquire a home in a quiet yet central location, offering a harmonious lifestyle in one of Harpenden's most sought-after neighbourhoods.

Location

Located on the desirable Hollybush Lane in Harpenden, this two-bedroom maisonette offers convenient access to the town centre, mainline station, and outstanding local schools. Benefitting from private parking and a communal rear private garden, it provides a peaceful setting with excellent amenities, ideal for professionals, couples, or small families.



Important Information

These particulars do not constitute an offer or contract in whole or part. The statements contained herein are made without responsibility on the part of Ashtons or the vendors and they cannot be relied upon as representatives of fact. In respect of floor plans, these are for illustrative purposes only. The measurement and position of each element is approximate and must be viewed as such. Intending purchasers should therefore satisfy themselves by inspection or otherwise as to their correctness. The vendors do not make or give, and neither Ashtons nor any person in their employment has any authority to make or give, any representation or warranty whatsoever in relation to this property.

We offer a wide range of services through third-party providers including solicitors, surveyors, removal firms, mortgage providers and EPC suppliers. We receive additional payments for administering suppliers quoting software and making referrals. You are not under any obligation to use these services and it is your discretion whether you choose to deal with these parties or your own preferred supplier. You should be aware the average payment we received in 2021 equated to £48.36 per referral.