



4 Bedrooms



2 Bath/Shower Room + WC



3 Reception Rooms



Driveway



Excess of 100ft



EPC Band

Council Tax

Band E
- £2,863.15 25/26

Local Authority
St Albans District Council



Overstone Road, Harpenden, Hertfordshire, AL5
Guide Price £1,150,000.00 Freehold

Overstone Road, Harpenden, Hertfordshire, AL5

NO ONWARD CHAIN. A spacious four bedroom semi-detached family home located close to extremely popular schooling and Harpenden railway station.

- 🏡 No onward chain
- 🏡 Four bedrooms
- 🏡 Two bath/shower rooms
- 🏡 Sitting room
- 🏡 Family/Dining room
- 🏡 Driveway parking
- 🏡 Garden in excess of 100ft

Description

This semi detached character family home is offered in good condition throughout and comprises four spacious bedrooms, all with built in storage cupboards, family bathroom and separate shower room. Downstairs, the frontal aspect sitting room has exposed timber flooring and open fireplace. The family room is open plan to the fully fitted kitchen/dining room which has full width sliding doors to the garden, underfloor heating and a number of built in base and wall mounted storage cupboards as well as appliances to include an electric double oven, extractor fan and gas hob.

Outside, the private rear garden measures in excess of 100ft and comprises a paved entertaining patio area with the remainder being laid to lawn and surrounded by well stocked flower and shrub borders as well as a brick built cabin/Summer House at the rear. To the front of the property is off street parking.

Location

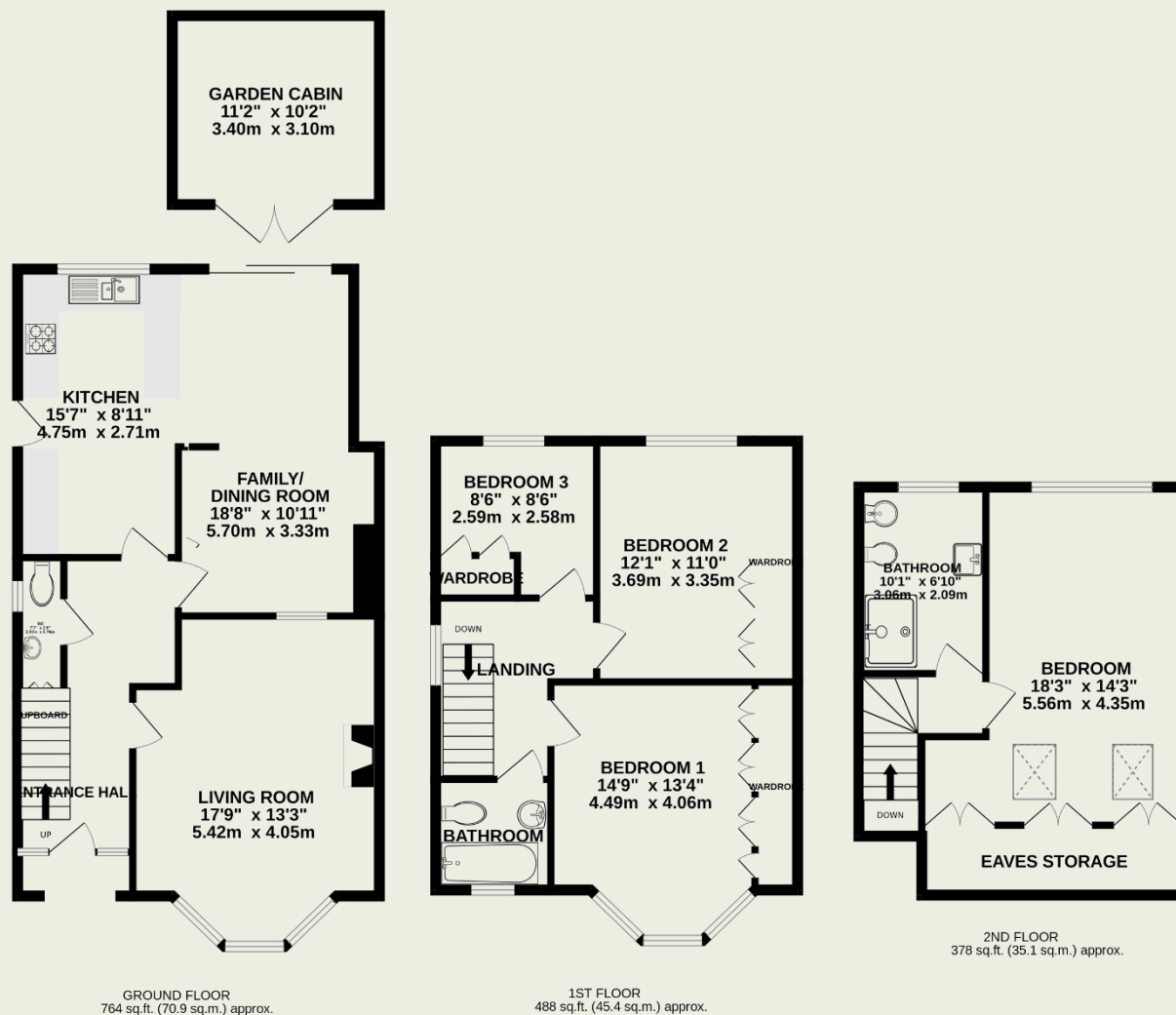
Overstone Road presents a wonderful setting for family life. The characterful houses present a wealth of charm as you enter the road and the peaceful yet central setting provides easy access to the wealth of facilities that Harpenden has to offer. The station and town centre are within half a mile and the schooling choice with Sir John Lawes, St Georges and Crabtree schools all within a short walk make this one of Harpenden's most prized locations. If you buy by location, few areas will rival this!





Important Information

These particulars do not constitute an offer or contract in whole or part. The statements contained herein are made without responsibility on the part of Ashtons or the vendors and they cannot be relied upon as representatives of fact. In respect of floor plans, these are for illustrative purposes only. The measurement and position of each element is approximate and must be viewed as such. Intending purchasers should therefore satisfy themselves by inspection or otherwise as to their correctness. The vendors do not make or give, and neither Ashtons nor any person in their employment has any authority to make or give, any representation or warranty whatsoever in relation to this property. We offer a wide range of services through third party providers including solicitors, surveyors, removal firms, mortgage providers and EPC suppliers. We receive additional payments for administering suppliers quoting software and making referrals. You are not under any obligations to use these services and it is your discretion whether you choose to deal with these parties or your own preferred supplier. You should be aware the average payment we received in 2021 equated to £48.36 per referral.



TOTAL FLOOR AREA : 1630 sq.ft. (151.4 sq.m.) approx.

This floorplan is for illustration purposes only. The measurements and position of each element are approximate and must be viewed as such.