



4 Bedrooms



2 Bath/Shower Room + WC



1 Reception Room



Driveway



Private Garden



EPC Band C

Council Tax

Band D
- £2,342.57 25/26

Local Authority
St Albans District Council

 **ashtons**
for life's great moves



Wroxham Way, Harpenden, AL5
Guide Price £910,000.00 Freehold

Wroxham Way, Harpenden, AL5

An well presented four bedroom semi-detached bungalow benefitting from a private rear garden in a peaceful and popular location.

- 🏡 No Chain Above
- 🏡 Principal bedroom with en-suite bathroom
- 🏡 Three further bedrooms
- 🏡 Open plan kitchen/reception room
- 🏡 Family bathroom
- 🏡 Utility room
- 🏡 Magnificent South/Westerly aspect gardens

Description

This magnificent family bungalow, which has engineered oak flooring throughout, has been the subject of considerable additions and modernisation by the current owners and boasts excellent sized rooms and vaulted ceilings.

The bright, airy and spacious accommodation comprises four large bedrooms, an en-suite bathroom with vaulted ceiling to the Principal, three further bedroom, family bathroom and utility room.

The stunning fully fitted open plan kitchen/reception room has bi-fold doors out to the gardens and a number of integrated appliances to include an eye level electric oven and microwave, extractor fan, electric hob and built in fridge/freezer.

Outside, the private gardens are South/Westerly facing and comprise of a large entertaining patio and steps up to the remainder of the garden where there is a sun terrace surrounded by well stocked flower and shrub borders, luxury top of the range jacuzzi and alfresco dining area.

Location

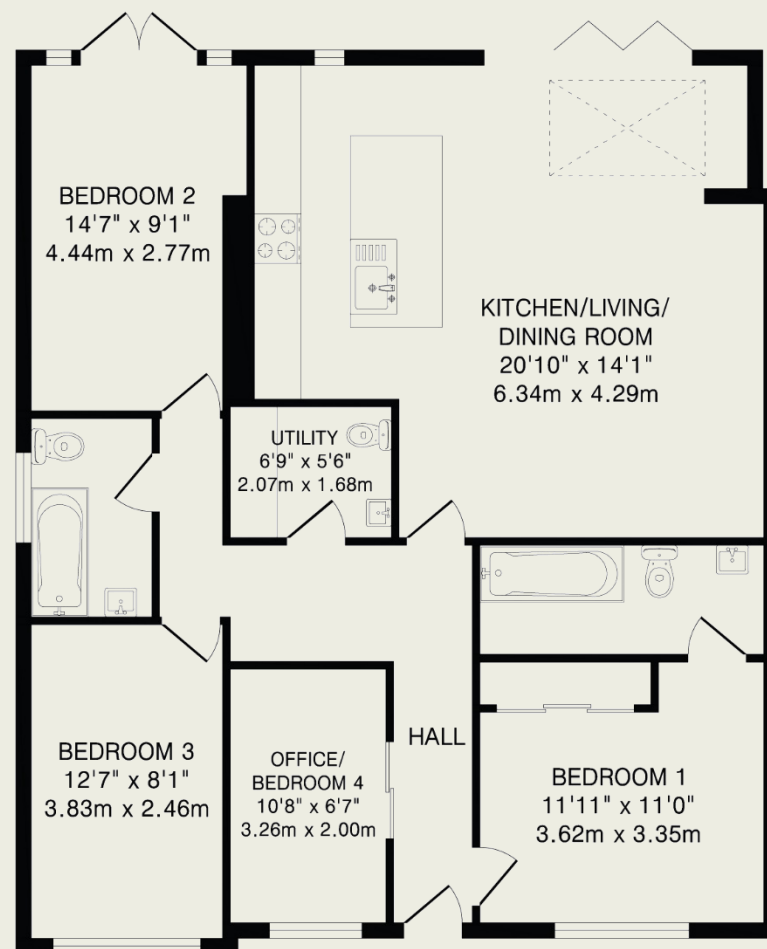
Wroxham Way is a peaceful cul-de-sac in the heart of the Ox Lane area of Harpenden. The location incorporates a range of building styles from all the epochs of Harpenden's development and provides a charming setting. Sir John Lawes and Manland schools are both within a short walk as is St Georges and Katherine Warrington. There is a large park at the end of the road and Harpenden station is approximately a mile and provides direct access to St Pancras International.





Important Information

These particulars do not constitute an offer or contract in whole or part. The statements contained herein are made without responsibility on the part of Ashtons or the vendors and they cannot be relied upon as representatives of fact. In respect of floor plans, these are for illustrative purposes only. The measurement and position of each element is approximate and must be viewed as such. Intending purchasers should therefore satisfy themselves by inspection or otherwise as to their correctness. The vendors do not make or give, and neither Ashtons nor any person in their employment has any authority to make or give, any representation or warranty whatsoever in relation to this property. We offer a wide range of services through third party providers including solicitors, surveyors, removal firms, mortgage providers and EPC suppliers. We receive additional payments for administering suppliers quoting software and making referrals. You are not under any obligations to use these services and it is your discretion whether you choose to deal with these parties or your own preferred supplier. You should be aware the average payment we received in 2021 equated to £48.36 per referral.



TOTAL FLOOR AREA: 1119 sq.ft.(103.9 sq.m)approx.
 This floorplan is for illustration purposes only. The measurements and position of each element are approximate and must be viewed as such.