



2 Bedrooms



1 Bathroom + WC



1 Reception Room



Driveway



100ft



EPC Band D

Council Tax

Band D

- £2,342.57 25/26

Local Authority

St Albans District Council



Lower Luton Road, Wheathampstead, Hertfordshire, AL4
Guide Price £550,000. Freehold

Lower Luton Road, Wheathampstead, Hertfordshire, AL4

A magnificent semi-detached family home close to Wheathampstead village and extremely popular schooling.

- 🏡 Magnificent countryside views
- 🏡 Two bedrooms
- 🏡 Large reception room
- 🏡 Family bathroom & downstairs cloakroom
- 🏡 Fully fitted kitchen/breakfast room
- 🏡 Large rear garden
- 🏡 Garden Home/Office

Description

This bright, airy and spacious family home is offered in super condition throughout and boasts scenic countryside views both front and rear. Arranged over two floors the accommodations boasts two good sized bedrooms and family bathroom on the first floor, whilst downstairs is a large frontal aspect reception room and wood burner. The fully fitted kitchen/dining room which has a range of wall and base storage units and recess for a Range cooker, wine cooler and dishwasher as well as extractor fan and central island unit. Outside, the rear garden measures approximately 100ft in depth and comprises a large entertaining patio with the remainder being laid to lawn and benefitting from a large timber built garden office/Summer house.

Location

Located between Wheathampstead and Harpenden, this area is popular with families thanks to its proximity to reputable schools, including the highly regarded Katherine Warington secondary school.





Important Information

These particulars do not constitute an offer or contract in whole or part. The statements contained herein are made without responsibility on the part of Ashtons or the vendors and they cannot be relied upon as representatives of fact. In respect of floor plans, these are for illustrative purposes only. The measurement and position of each element is approximate and must be viewed as such. Intending purchasers should therefore satisfy themselves by inspection or otherwise as to their correctness. The vendors do not make or give, and neither Ashtons nor any person in their employment has any authority to make or give, any representation or warranty whatsoever in relation to this property. We offer a wide range of services through third party providers including solicitors, surveyors, removal firms, mortgage providers and EPC suppliers. We receive additional payments for administering suppliers quoting software and making referrals. You are not under any obligations to use these services and it is your discretion whether you choose to deal with these parties or your own preferred supplier. You should be aware the average payment we received in 2021 equated to £48.36 per referral.

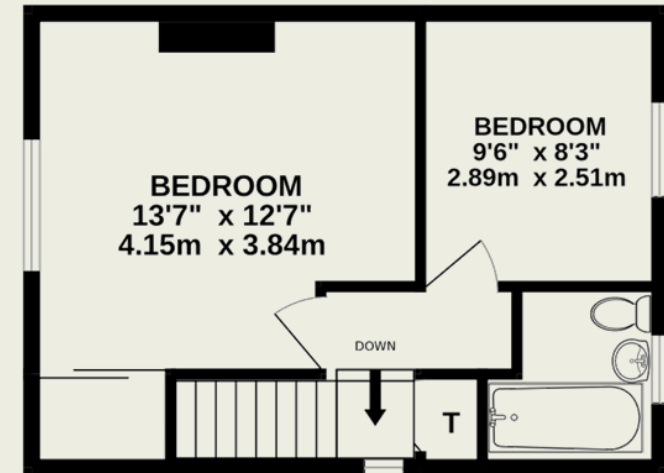


GARDEN STORE
7'10" x 4'8"
2.40m x 1.41m

HOME OFFICE
10'10" x 10'9"
3.30m x 3.27m



GROUND FLOOR



1ST FLOOR

TOTAL FLOOR AREA : 1090sq.ft. (101.3 sq.m.) approx.

This floorplan is for illustration purposes only. The measurements and position of each element are approximate and must be viewed as such.