



3 Bedrooms



2 Bath/Shower Room + WC



1 Reception Room



Garage & Driveway



Private Garden



EPC Band tba

Council Tax

Band E  
- £2,863.15 25/26

Local Authority  
St Albans District Council



Lower Luton Road, Wheathampstead, AL4  
Guide Price £600,000.00 Freehold

## Lower Luton Road, Wheathampstead, AL4

A beautifully presented semi detached bungalow offering spacious accommodation and close to popular schooling.

🏡 Superbly presented throughout

🏡 Three bedrooms

🏡 Large lounge/dining room

🏡 Family bathroom

🏡 Separate shower room

🏡 Fully fitted kitchen

🏡 Conservatory

### Description

This wonderful semi detached family bungalow boasts delightful views across the River Lea and towards Aldwickbury Golf Course. Occupying an elevated position set back from the Lower Luton Road, the bright, airy and spacious accommodation comprises three really good sized bedrooms and family bathroom. There is also a separate shower room and glazed conservatory with Karndean flooring and access to the gorgeous gardens.

The large lounge/dining room is frontal aspect whilst the fully fitted kitchen has an ample range of wall and base storage units, ceramic tiled flooring, surrounding granite work surfaces, integrated dishwasher, a multi burner Range cooker, extractor fan along with integrated fridge, freezer and washing machine.

Outside, the large, secluded gardens have a timber built home office with telephone point and entertaining patio, whilst the remainder is laid mostly to lawn with well stocked flower and shrub borders and raised timber decked area.

At the front is a two-car driveway leading to an attached garage which has light and power.

### Location

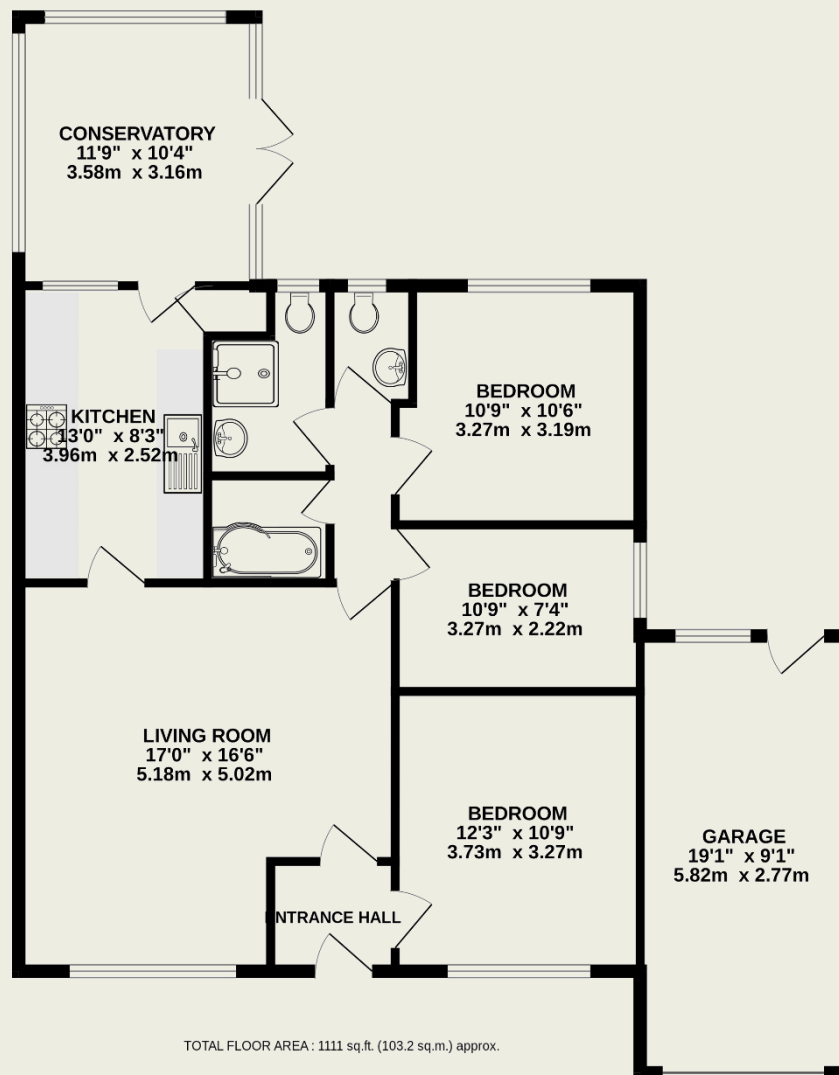
Located in a super position just off the Lower Luton Road ideally situated between Harpenden and the village of Wheathampstead and within walking distance to popular schooling. This bungalow enjoys an elevated position with stunning open countryside and views over the Lea Valley as far as Aldwickbury Golf Course. Harpenden Station and Town Centre is just 1.5 miles away and can be reached by car within 5 minutes.





**Important Information**

These particulars do not constitute an offer or contract in whole or part. The statements contained herein are made without responsibility on the part of Ashtons or the vendors and they cannot be relied upon as representatives of fact. In respect of floor plans, these are for illustrative purposes only. The measurement and position of each element is approximate and must be viewed as such. Intending purchasers should therefore satisfy themselves by inspection or otherwise as to their correctness. The vendors do not make or give, and neither Ashtons nor any person in their employment has any authority to make or give, any representation or warranty whatsoever in relation to this property. We offer a wide range of services through third party providers including solicitors, surveyors, removal firms, mortgage providers and EPC suppliers. We receive additional payments for administering suppliers quoting software and making referrals. You are not under any obligations to use these services and it is your discretion whether you choose to deal with these parties or your own preferred supplier. You should be aware the average payment we received in 2021 equated to £48.36 per referral.



This floorplan is for illustration purposes only. The measurements and position of each element are approximate and must be viewed as such.