



4 Bedrooms



2 Bath/Shower Room + WC



1 Reception Room



Garage & Driveway



Private Garden



EPC Band C

Council Tax

Band F
- £3,383.72 25/26

Local Authority
St Albans District Council



Old School Drive, Wheathampstead, AL4
Guide Price £895,000.00 Freehold

Old School Drive, Wheathampstead, AL4

Forming part of this highly regarded Charles Church development constructed in 2011 this double fronted detached four bedroom home offers superb family space for modern living.

🏡 Constructed in 2011 by Charles Church

🏡 Ensuite to the principal bedroom

🏡 Separate utility room

🏡 Views out to the common

🏡 Four bedrooms

🏡 Kitchen/dining room

🏡 Immaculately maintained

Description

This fine home currently provides: a spacious sitting room that enjoys a bright dual aspect, a truly stunning kitchen-breakfast room measuring in excess of 20ft in length. A useful utility, located just off the kitchen and, completing the ground floor, there is also a separate cloakroom.

Upstairs the spacious landing leads to a principal bedroom with a superb ensuite complimented by three further well-appointed bedrooms and the family bathroom.

This fine family home benefits from a secluded rear garden with a sunny patio area and a level lawn, ideal for young children as it is fully enclosed.

Externally, there are wonderful views over the common to the front and, to the rear of the property with gated access from the garden is off-street parking leading to the garage.

Immaculately maintained it's a must see home!

Prospective buyers should be aware that there is a maintenance charge for upkeep of the communal grass area set at £500 per annum.

Location

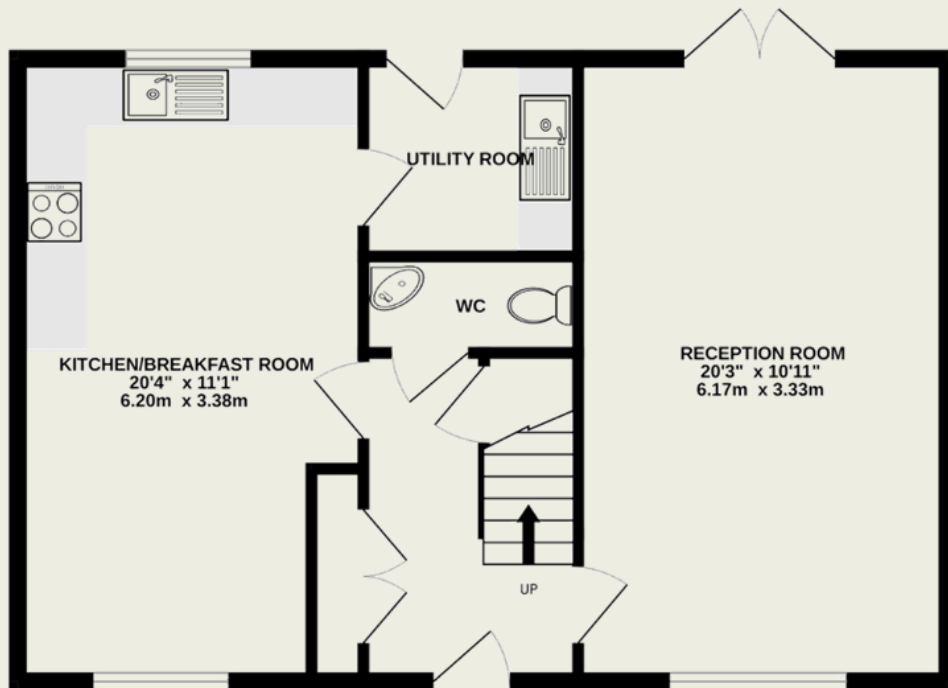
Old School Drive is located in the heart of Wheathampstead and accessed off Butterfield Road. Forming part of a new development built in 2011 by Charles Church, beautifully laid out amongst manicured greens, it offers a peaceful cul-de-sac location for any family.



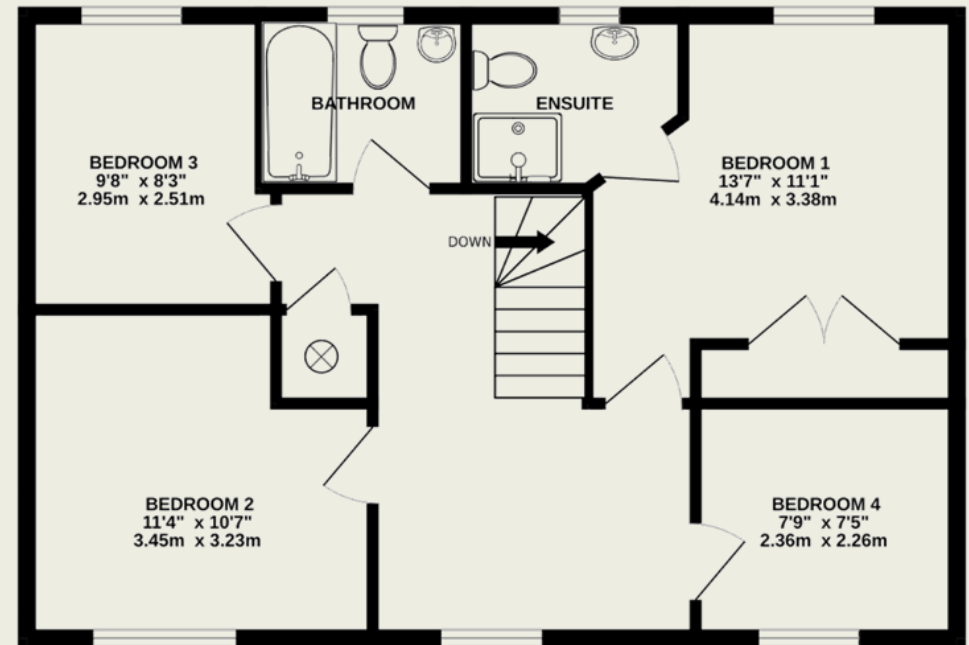


Important Information

These particulars do not constitute an offer or contract in whole or part. The statements contained herein are made without responsibility on the part of Ashtons or the vendors and they cannot be relied upon as representatives of fact. In respect of floor plans, these are for illustrative purposes only. The measurement and position of each element is approximate and must be viewed as such. Intending purchasers should therefore satisfy themselves by inspection or otherwise as to their correctness. The vendors do not make or give, and neither Ashtons nor any person in their employment has any authority to make or give, any representation or warranty whatsoever in relation to this property. We offer a wide range of services through third party providers including solicitors, surveyors, removal firms, mortgage providers and EPC suppliers. We receive additional payments for administering suppliers quoting software and making referrals. You are not under any obligations to use these services and it is your discretion whether you choose to deal with these parties or your own preferred supplier. You should be aware the average payment we received in 2021 equated to £48.36 per referral.



GROUND FLOOR
619 sq.ft. (57.5 sq.m.) approx.



1ST FLOOR
619 sq.ft. (57.5 sq.m.) approx.

TOTAL FLOOR AREA : 1232sq.ft. (114.5 sq.m.) approx.

This floorplan is for illustration purposes only. The measurements and position of each element are approximate and must be viewed as such.