



The Putterills, Harpenden, AL5

 2 Bedrooms

 1 Bath/Shower Room

 1 Reception Room

 Residents Parking

 Communal Grounds

 EPC Band C

Council Tax
Band: D – £2,229.54 (24/25)
Length of Lease till 31st December
3004
Service Charges £900pa
Ground Rent £60.00

Guide Price
£339,000 Leasehold

 **ashtons**
for life's great moves



A generously sized two-bedroom first-floor apartment situated in an incredibly central location, just steps away from Harpenden High Street.

Description

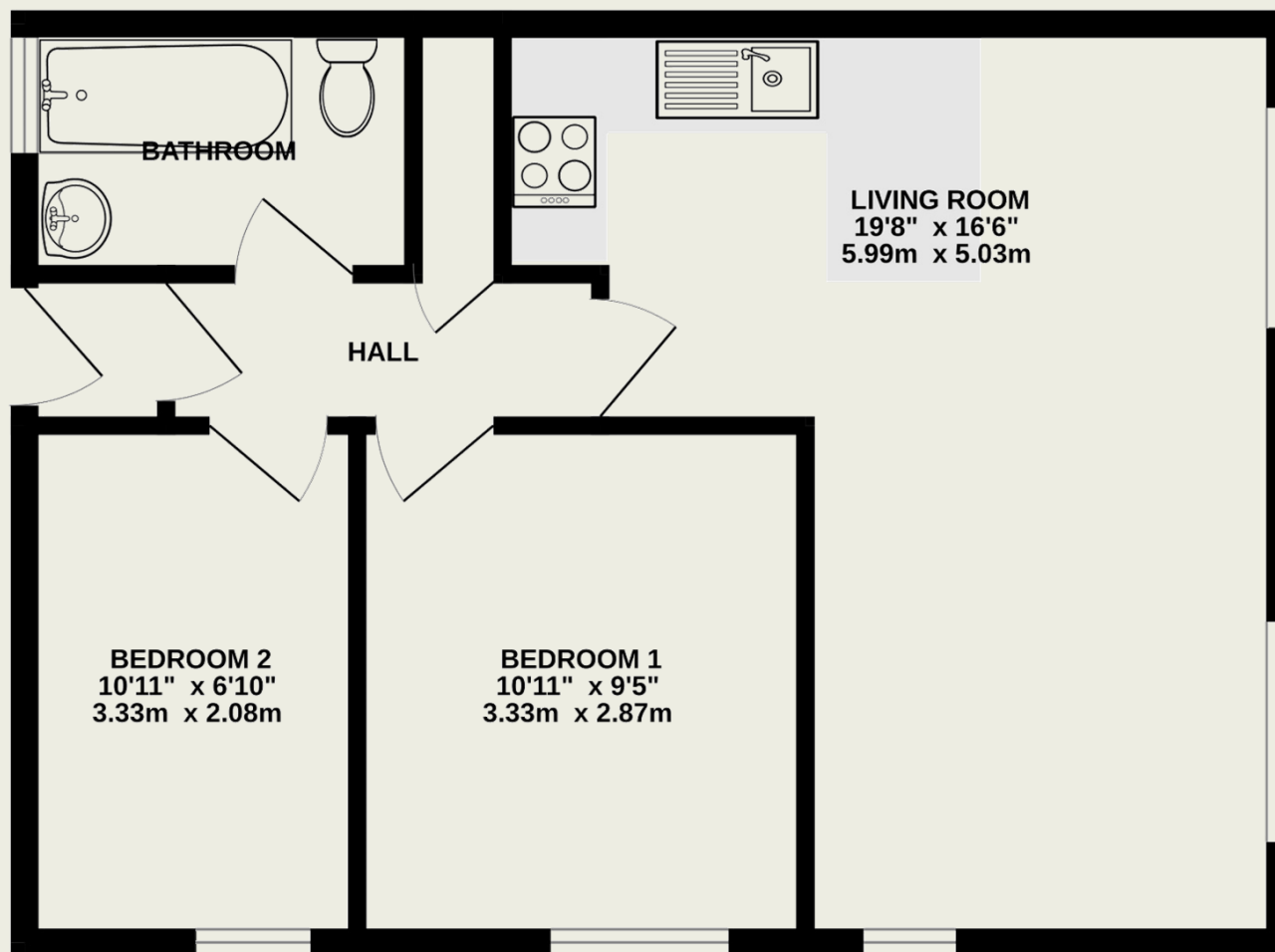
Nestled within a sought-after development, this first-floor apartment is perfect for first-time buyers, investors, or anyone seeking to enjoy life in the heart of Harpenden.

Accessible through a secure communal entrance, the apartment welcomes you with an inviting entrance porch and hallway. The spacious open-plan living area includes a dining space and a well-appointed kitchen with fitted units.

The property also features two generously sized bedrooms and a contemporary bathroom. The development is meticulously maintained, boasting lush landscaped gardens, dedicated resident parking, and convenient visitor spaces.

Location

Nestled in Thompsons Close, The Putterills is a true hidden gem! This characterful location showcases a delightful mix of homes reflecting the various eras of Harpenden's development. Its unbeatable proximity to amenities puts Harpenden's vibrant array of shops and restaurants just a minute's walk from your doorstep. Adding to its appeal, Harpenden Town Station is only moments away, offering Thameslink Services ideal for commuting and travel.



TOTAL FLOOR AREA : 511 sq.ft. (47.5 sq.m.) approx.

This floorplan is for illustration purposes only. The measurements and position of each element are approximate and must be viewed as such.

Important Information

These particulars do not constitute an offer or contract in whole or part. The statements contained herein are made without responsibility on the part of Ashtons or the vendors and they cannot be relied upon as representatives of fact. In respect of floor plans, these are for illustrative purposes only. The measurement and position of each element is approximate and must be viewed as such. Intending purchasers should therefore satisfy themselves by inspection or otherwise as to their correctness. The vendors do not make or give, and neither Ashtons nor any person in their employment has any authority to make or give, any representation or warranty whatsoever in relation to this property.

We offer a wide range of services through third-party providers including solicitors, surveyors, removal firms, mortgage providers and EPC suppliers. We receive additional payments for administering suppliers quoting software and making referrals. You are not under any obligation to use these services and it is your discretion whether you choose to deal with these parties or your own preferred supplier. You should be aware the average payment we received in 2021 equated to £48.36 per referral.