



4 Bedrooms



3 Bath/Shower Room + WC



2 Reception Rooms



Off Street



120ft Garden



EPC Band D

Council Tax

Band E

- £2,725.00 24/25

Local Authority

St Albans District Council

 **ashtons**
for life's great moves

Luton Road, Harpenden, AL5
Asking Price £985,000.00

Luton Road, Harpenden, AL5

Beautifully presented four bedroom family home, with large garden and parking, and ideally located for schooling.

- Extended family home
- Period features throughout
- Four bedrooms
- Three bathrooms
- Stylish kitchen/dining room
- Spacious sitting room
- 120ft South Westerly rear garden

Description

A beautifully presented extended period family home situated in a sought-after location close to schools. The property features a welcoming entrance hallway, generous bay-fronted sitting room with feature fireplace, a family room with an additional feature fireplace and a stylish kitchen/dining room which wraps around an enclosed outdoor courtyard and has two sets of patio doors opening out onto the rear garden. Completing the downstairs is a modern shower room.

On the first floor, there are two double bedrooms and a generous single bedroom, all of which are off a spacious landing and served by the family bathroom.

Up again, at the top of the house, is the spectacular principal bedroom, which has a whole wall of built in wardrobes, its own contemporary en suite shower room and far reaching views over rooftops and countryside in the distance.

Outside, the home boasts a 120ft South-Westerly rear garden mainly laid to lawn, complimented by a paved patio area that is ideal for entertaining in the warmer summer months. To the front is ample driveway parking for a number of vehicles.

Location

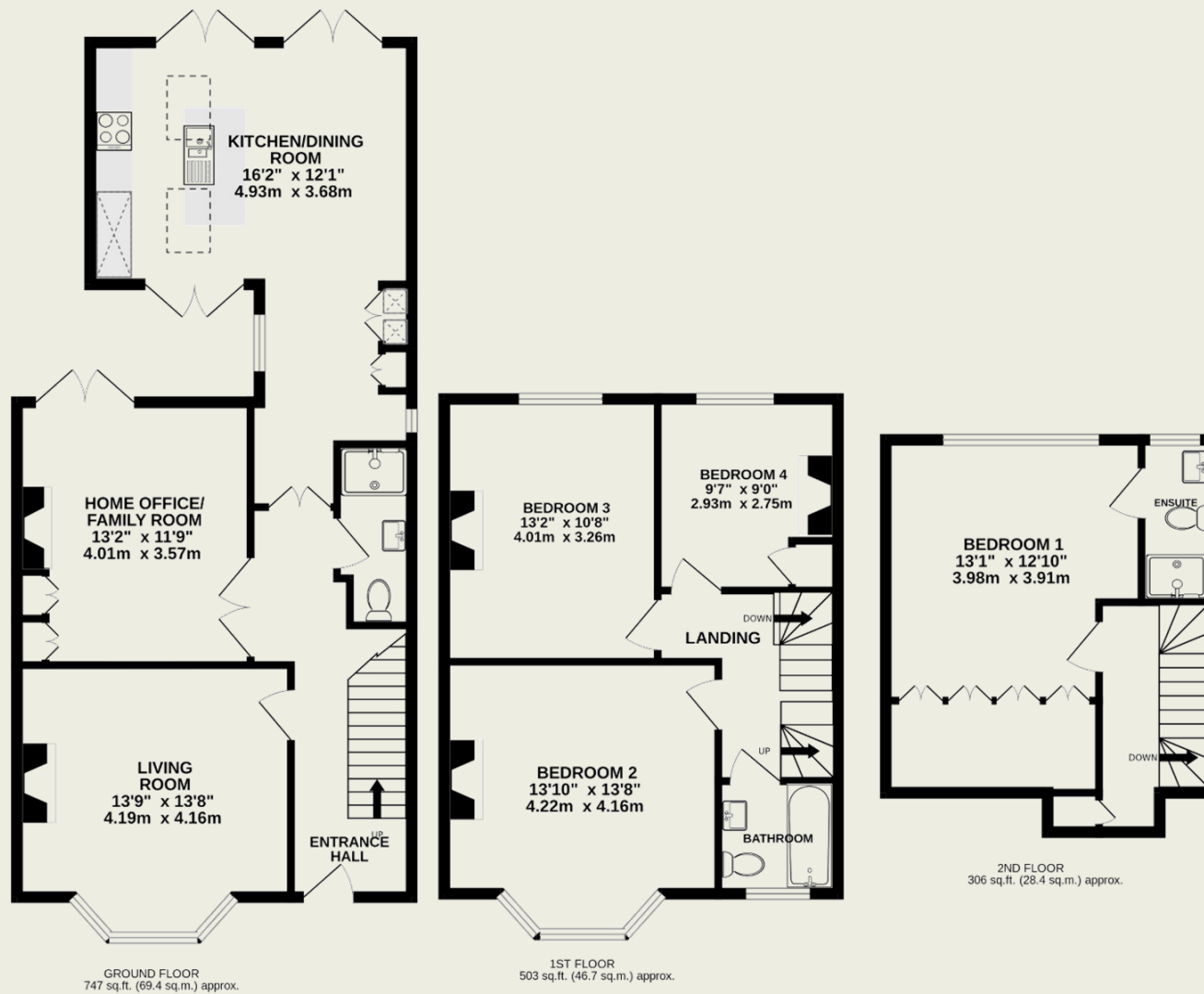
Situated on the Luton Road and boasting breath-taking views of the rolling Hertfordshire countryside, this charming home offers the perfect blend of tranquillity and convenience for family living. Just over a mile from Harpenden's picturesque, tree-lined town centre and mainline station, with fast trains reaching central London in just 26 minutes, it provides an ideal setting for a well-connected lifestyle. For families, the highly regarded Roundwood Park primary and secondary schools, along with the excellent Wood End and St Georges, are all within a leisurely ten-minute stroll. A delightful home in a wonderful setting.





Important Information

These particulars do not constitute an offer or contract in whole or part. The statements contained herein are made without responsibility on the part of Ashtons or the vendors and they cannot be relied upon as representatives of fact. In respect of floor plans, these are for illustrative purposes only. The measurement and position of each element is approximate and must be viewed as such. Intending purchasers should therefore satisfy themselves by inspection or otherwise as to their correctness. The vendors do not make or give, and neither Ashtons nor any person in their employment has any authority to make or give, any representation or warranty whatsoever in relation to this property. We offer a wide range of services through third party providers including solicitors, surveyors, removal firms, mortgage providers and EPC suppliers. We receive additional payments for administering suppliers quoting software and making referrals. You are not under any obligations to use these services and it is your discretion whether you choose to deal with these parties or your own preferred supplier. You should be aware the average payment we received in 2021 equated to £48.36 per referral.



TOTAL FLOOR AREA : 1557sq.ft. (144.7 sq.m.) approx.

This floorplan is for illustration purposes only. The measurements and position of each element are approximate and must be viewed as such.