

Stathams Court,
Redbourn,
Hertfordshire, AL3

 1 Bedroom

 1 Bathroom

 1 Reception Room

 Allocated Car Port
Parking Space

 Communal

 EPC Band D

Council Tax
Band: C – £2097.02 March 2025
St Albans District Council
Lease: 125 years from 01/12/2001
Service Charge: £199.76 pcm
Ground Rent: £179 every 6 months

Guide Price
£220,000 Leasehold

 **ashtons**
for life's great moves



Well presented one bedroom apartment with allocated parking, located close to Redbourn Common in this popular and sought after village.

Description

Offering well appointed accommodation this attractive apartment is located on the second floor of this popular development and benefits from a security entryphone system leading from the communal hallway.

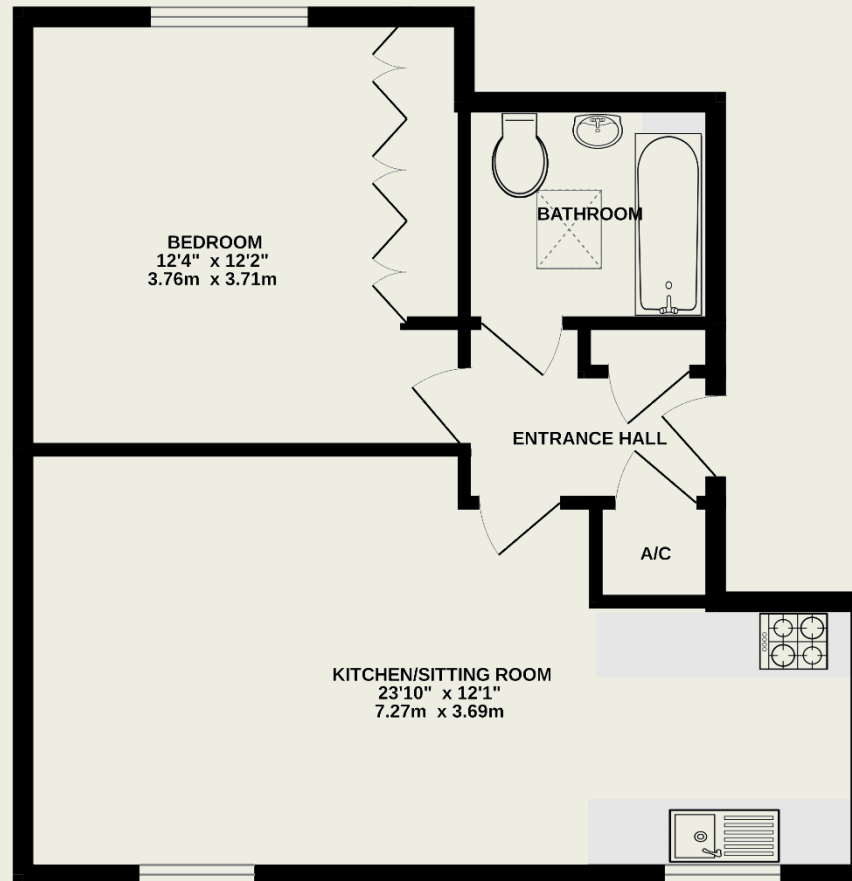
The light and airy accommodation includes a good size open plan living room/kitchen with wood flooring and views over St Mary's church. The kitchen is fully fitted with a stylish range of units and integrated appliances. There is a double bedroom with built-in wardrobes and a modern bathroom with bath/shower.

The property also benefits from an allocated parking space.

An internal viewing is highly recommended!

Location

Located close to Redbourn Common and easily accessible to the village High Street with the larger towns of Harpenden and St Albans close by, which offers fast and efficient train services into London. The M1 motorway and Luton Airport are also close at hand.



TOTAL FLOOR AREA : 497 sq.ft. (46.1 sq.m.) approx.

This floorplan is for illustrative purposes only. The measurement and position of each element is approximate and must be viewed as such.

Important Information

These particulars do not constitute an offer or contract in whole or part. The statements contained herein are made without responsibility on the part of Ashtons or the vendors and they cannot be relied upon as representatives of fact. In respect of floor plans, these are for illustrative purposes only. The measurement and position of each element is approximate and must be viewed as such. Intending purchasers should therefore satisfy themselves by inspection or otherwise as to their correctness. The vendors do not make or give, and neither Ashtons nor any person in their employment has any authority to make or give, any representation or warranty whatsoever in relation to this property.

We offer a wide range of services through third-party providers including solicitors, surveyors, removal firms, mortgage providers and EPC suppliers. We receive additional payments for administering suppliers quoting software and making referrals. You are not under any obligation to use these services and it is your discretion whether you choose to deal with these parties or your own preferred supplier. You should be aware the average payment we received in 2021 equated to £48.36 per referral.