



3 Bedrooms



1 Bath/Shower Room



1 Reception Room



Driveway



Private Garden



EPC Band TBC

Council Tax

Band C: £2,080.09 2025/26

Local Authority  
Dacorum Council



**Corner Wood, Markyate, St. Albans, AL3 8RF**  
**Guide Price £465,000 Freehold**



# Corner Wood, Markyate, St. Albans

Spacious three-bedroom semi-detached home with generous garden, located a short walk from village amenities.

- Spacious three bedroom home
- Large garden
- Generous living room and conservatory
- Modern kitchen/diner
- Upstairs bathroom
- Off-street parking
- Close to village amenities

## Description

The property offers light and spacious living accommodation, including a large lounge which opens into a good size conservatory at the rear. The kitchen/diner is also generous in size and is fully fitted with a stylish range of units with integrated double oven and gas hob, there is ample space for a dining table.

Upstairs there are three bedrooms served by a modern bathroom with bath and separate shower cubicle.

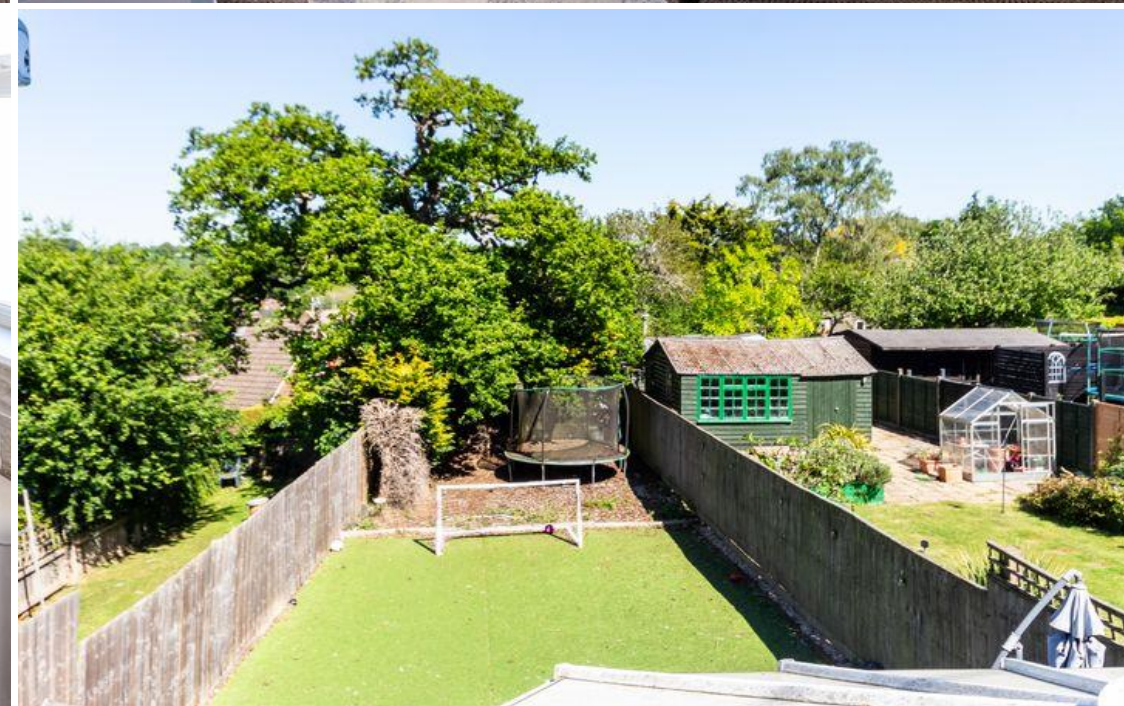
Outside, the rear garden is a good size and currently laid with astro turf for low maintenance. To the front a gravel driveway provides ample off-street parking.

## Location

Corner Wood is situated close to the village High Street and open countryside with idyllic walks and a good selection of amenities including pubs, restaurants and shops that cater for daily needs. Markyate has excellent transport links and is within close proximity to the M1 and M25 motorways, Luton Airport and fast efficient rail links into St Pancras from nearby Harpenden and St. Albans.

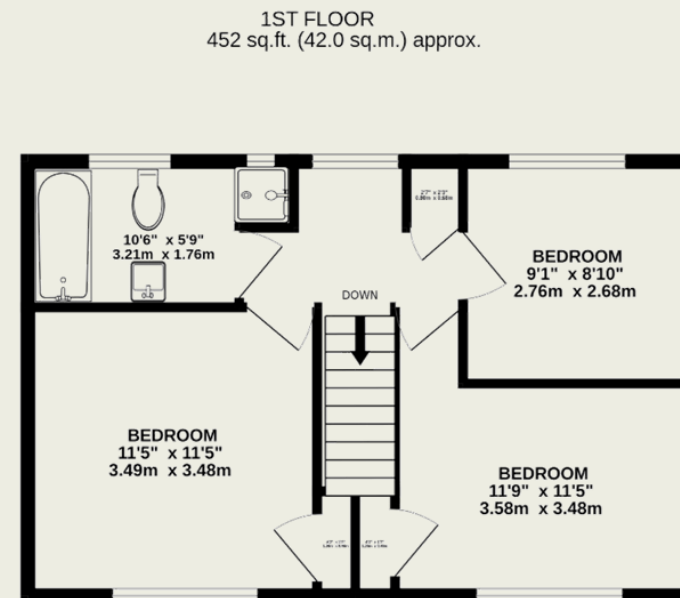
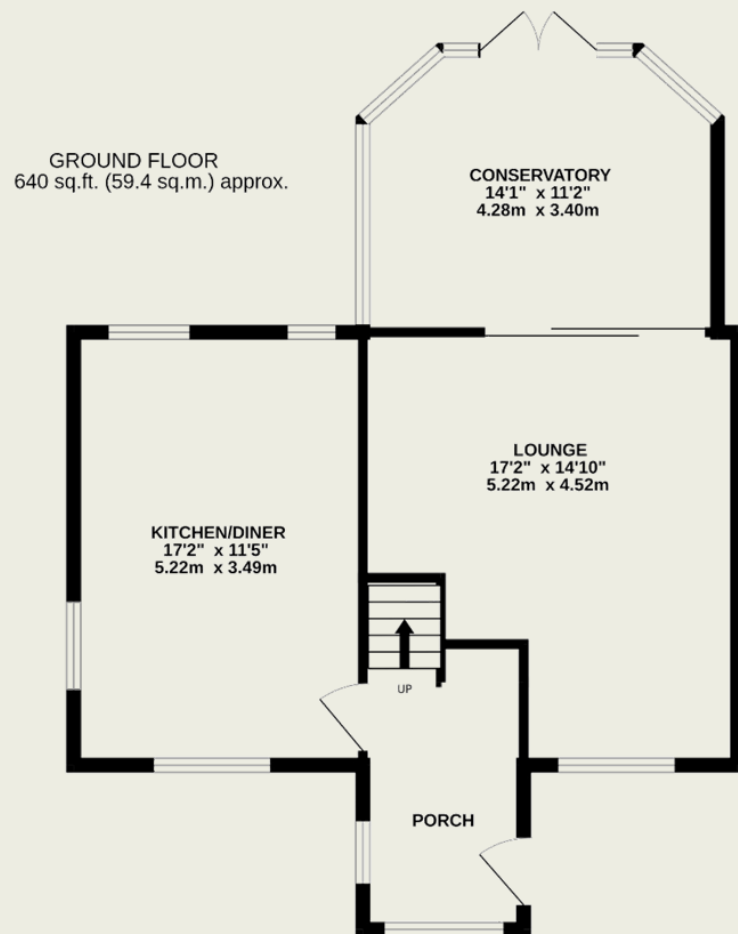






#### Important Information

These particulars do not constitute an offer or contract in whole or part. The statements contained herein are made without responsibility on the part of Ashtons or the vendors and they cannot be relied upon as representatives of fact. In respect of floor plans, these are for illustrative purposes only. The measurement and position of each element is approximate and must be viewed as such. Intending purchasers should therefore satisfy themselves by inspection or otherwise as to their correctness. The vendors do not make or give, and neither Ashtons nor any person in their employment has any authority to make or give, any representation or warranty whatsoever in relation to this property. We offer a wide range of services through third party providers including solicitors, surveyors, removal firms, mortgage providers and EPC suppliers. We receive additional payments for administering suppliers quoting software and making referrals. You are not under any obligations to use these services and it is your discretion whether you choose to deal with these parties or your own preferred supplier. You should be aware the average payment we received in 2021 equated to £48.36 per referral.



TOTAL FLOOR AREA : 1091 sq.ft. (101.4 sq.m.) approx.

This floorplan is for illustrative purposes only. The measurement and position of each element is approximate and must be viewed as such.