



3 Bedrooms



1 Bath/Shower Room + WC



1 Reception Rooms



Driveway



Landscaped Garden



EPC Band C

Council Tax

Band C: £2,097.02 2025/26

Local Authority
St Albans Council



Stephens Way, Redbourn, St. Albans, AL3 7DZ
Guide Price £450,000 Freehold

Stephens Way, Redbourn, St. Albans

Spacious three bedroom terraced home located on a popular development close to Redbourn Common.

- Close to Redbourn Common
- Three bedrooms
- Modern kitchen/diner
- Large reception room
- Separate utility room
- Off-street parking
- Landscaped Garden with pergola

Description

This excellent three bedroom village home offers spacious accommodation and a pretty private garden. The property is approached via a driveway providing off street parking for two cars.

The entrance leads into an attractive hallway with study area giving access to a large kitchen/diner which is fully fitted with a stylish range of units with space for a Range style Cooker and dishwasher. A good size living room sits to the rear with patio doors leading out to the garden. The garage has been partly converted to a utility room with plumbing for a washing machine. The remaining garage provides additional storage. In addition, there is a WC room off the hallway with potential to plumb in a WC and hand basin.

Upstairs there are three good size bedrooms served by an attractive family bathroom fitted with 'Victorian style' freestanding bath and separate shower cubicle.

Outside the rear garden is fully fenced with patio and lawned area and raised beds. Steps lead up to a further patio with veranda - a lovely spot to enjoy the sun!

Location

Located close to the village Common in Redbourn, a picturesque village in Hertfordshire with excellent amenities and well regarded infant and junior school. The village is conveniently located for the M1 J9 and M25 motorways and Luton Airport, with easy access to wider amenities and efficient rail links at Harpenden and St.Albans.

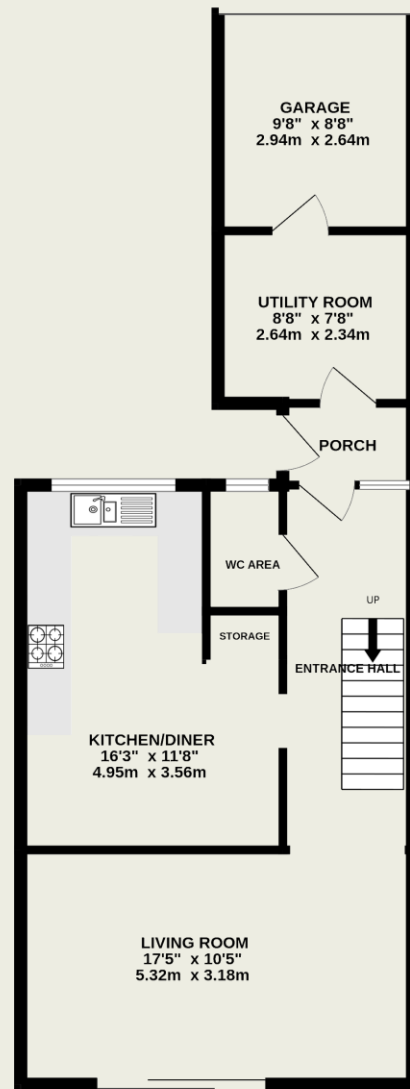




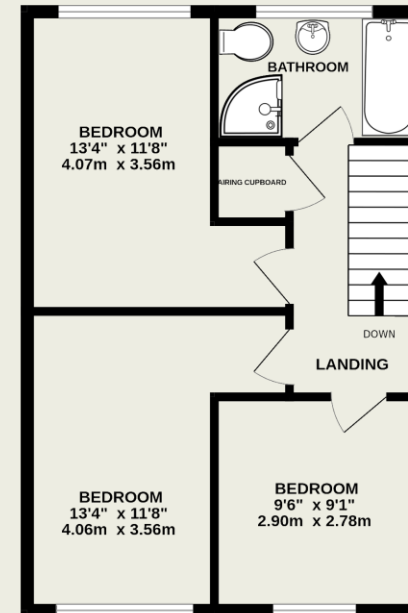
Important Information

These particulars do not constitute an offer or contract in whole or part. The statements contained herein are made without responsibility on the part of Ashtons or the vendors and they cannot be relied upon as representatives of fact. In respect of floor plans, these are for illustrative purposes only. The measurement and position of each element is approximate and must be viewed as such. Intending purchasers should therefore satisfy themselves by inspection or otherwise as to their correctness. The vendors do not make or give, and neither Ashtons nor any person in their employment has any authority to make or give, any representation or warranty whatsoever in relation to this property. We offer a wide range of services through third party providers including solicitors, surveyors, removal firms, mortgage providers and EPC suppliers. We receive additional payments for administering suppliers quoting software and making referrals. You are not under any obligations to use these services and it is your discretion whether you choose to deal with these parties or your own preferred supplier. You should be aware the average payment we received in 2021 equated to £48.36 per referral.

GROUND FLOOR
637 sq.ft. (59.1 sq.m.) approx.



1ST FLOOR
466 sq.ft. (43.3 sq.m.) approx.



TOTAL FLOOR AREA : 1102 sq.ft. (102.4 sq.m.) approx.

This floorplan is for illustrative purposes only. The measurement and position of each element is approximate and must be viewed as such.