



3 Bedrooms



1 Bath/Shower Room



2 Reception Rooms



Garage and Driveway



Large South facing Garden



EPC Band TBC

Council Tax

Band F: £3,407.63 2025/26

Local Authority
St Albans Council



Aysgarth Road, Redbourn, St. Albans, AL3 7PJ
Guide Price £650,000 Freehold

Aysgarth Road, Redbourn, St. Albans

Excellent three bedroom detached home with potential to extend (STPP), with large garden and garage.

- Three bedroom detached home
- Sought after location in a private road
- Close to village amenities
- Two reception rooms
- Large south facing garden
- Garage and off-street parking
- Offered chain free

Description

This double fronted detached home sits on a generous plot and is well located in a private road just a short walk from the village centre and amenities. The property requires some updating but has excellent potential to extend further and create a wonderful family home and is offered to the market chain free.

The ground floor accommodation includes an entrance hall, two dual aspect reception rooms and a fitted kitchen to the rear with external door leading out to the garden.

Upstairs there are three bedrooms served by a modern shower room. The principal bedroom is a particularly good size and has built in wardrobes.

The large south facing rear garden is a fabulous feature of the property and is mainly laid to lawn with a raised patio and a variety of flower beds. There are several timber sheds providing additional storage. A side gate leads out to the driveway and garage.

Location

Located in Aysgarth Road, a sought after private cul de sac close to the High Street in Redbourn, a picturesque village in Hertfordshire with a good choice of amenities. Conveniently located close to both Harpenden and the historic City of St Albans which both offer wider amenities, secondary schools and fast rail links into London St Pancras and The City. The M1 motorway and London Luton Airport are also within easy reach.

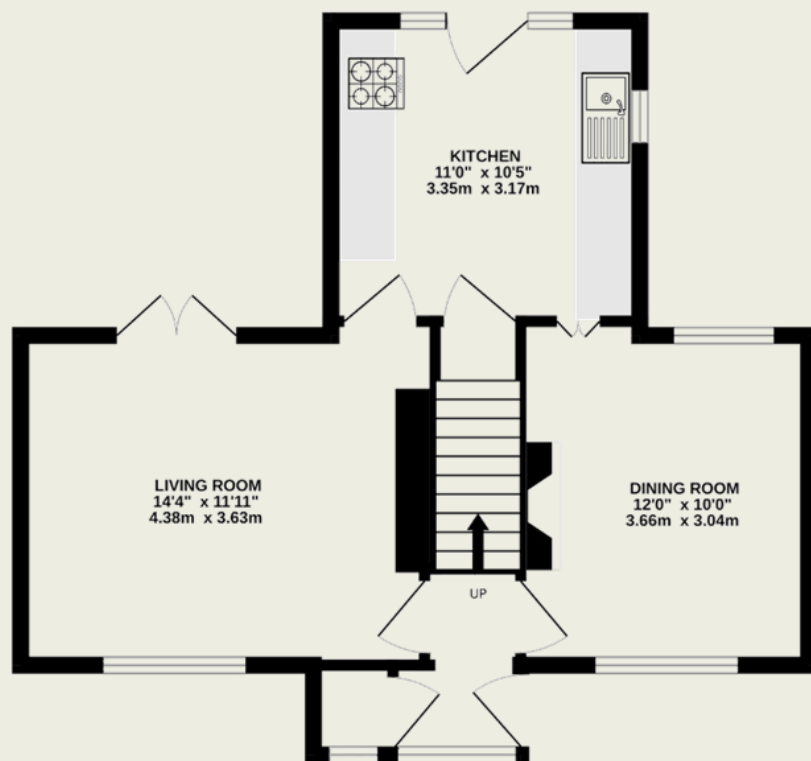




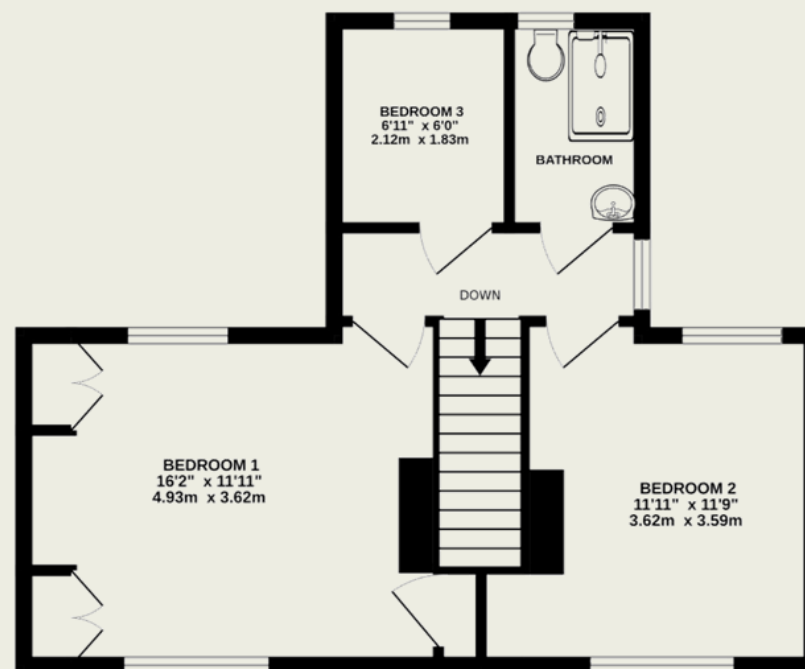
Important Information

These particulars do not constitute an offer or contract in whole or part. The statements contained herein are made without responsibility on the part of Ashtons or the vendors and they cannot be relied upon as representatives of fact. In respect of floor plans, these are for illustrative purposes only. The measurement and position of each element is approximate and must be viewed as such. Intending purchasers should therefore satisfy themselves by inspection or otherwise as to their correctness. The vendors do not make or give, and neither Ashtons nor any person in their employment has any authority to make or give, any representation or warranty whatsoever in relation to this property. We offer a wide range of services through third party providers including solicitors, surveyors, removal firms, mortgage providers and EPC suppliers. We receive additional payments for administering suppliers quoting software and making referrals. You are not under any obligations to use these services and it is your discretion whether you choose to deal with these parties or your own preferred supplier. You should be aware the average payment we received in 2021 equated to £48.36 per referral.

GROUND FLOOR
438 sq.ft. (40.7 sq.m.) approx.



1ST FLOOR
419 sq.ft. (38.9 sq.m.) approx.



TOTAL FLOOR AREA : 856 sq.ft. (79.6 sq.m.) approx.

This floorplan is for illustrative purposes only. The measurement and position of each element is approximate and must be viewed as such.