



3 Bedrooms



2 Bath/Shower Room + WC



1 Reception Rooms



Driveway



Hard Landscaped Gardens



EPC Band D

Council Tax

Band D: £2,340.09 2025/26

Local Authority
Dacorum Council



Dammersey Close, Markyate, St. Albans, AL3 8JS
Guide Price £435,000 Freehold

Dammersey Close, Markyate, AL3 8JS

Spacious detached chalet bungalow, located in a quiet cul-de-sac in an elevated position with far reaching views to the rear.

- Chalet bungalow
- Attractive views to the rear
- Large living room
- Modern kitchen/diner and separate utility room
- Three bedrooms
- Bathroom and shower room
- Walking distance to amenities

Description

This excellent village home is well located at the end of a quiet cul-de-sac in this popular Hertfordshire village and is walking distance from the the High Street and amenities. The property was subject to a water leak to part of the ground floor but this has been fully rectified and a 'dry certificate' has been issued.

The spacious and light ground floor accommodation includes an entrance hall, large living room with feature fireplace and modern fitted kitchen/diner. There is also a double bedroom and bathroom on this level. Upstairs there are two further double bedrooms and a shower room.

Outside the garden is a good size and has been hard landscaped for easy maintenance, with attractive views to the rear. To the front of the property a large paved driveway provides off-street parking for several vehicles.

Location

Located at the southern end of the village and a short walk from High Street amenities, which include pubs, restaurants and a variety of shops, as well as a gym, doctors surgery. There is a well regarded junior school in the village and excellent secondary schools in nearby Harpenden. Transport links into London are within easy reach, including the M1 motorway and fast train services from Harpenden.

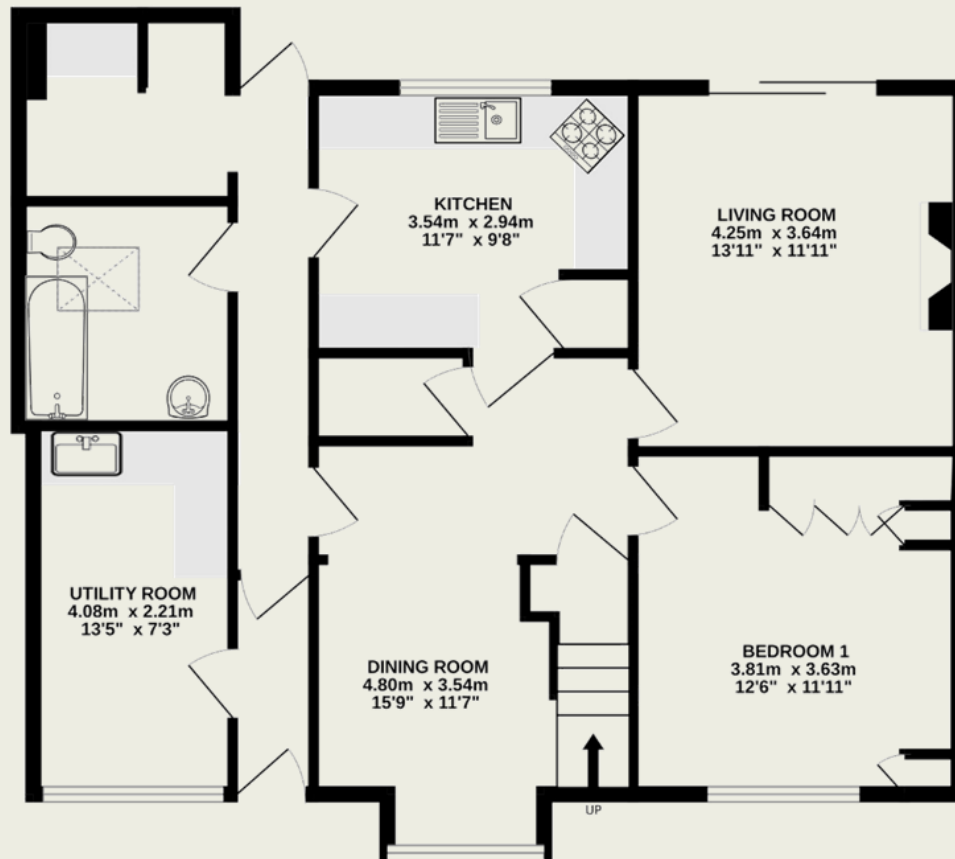




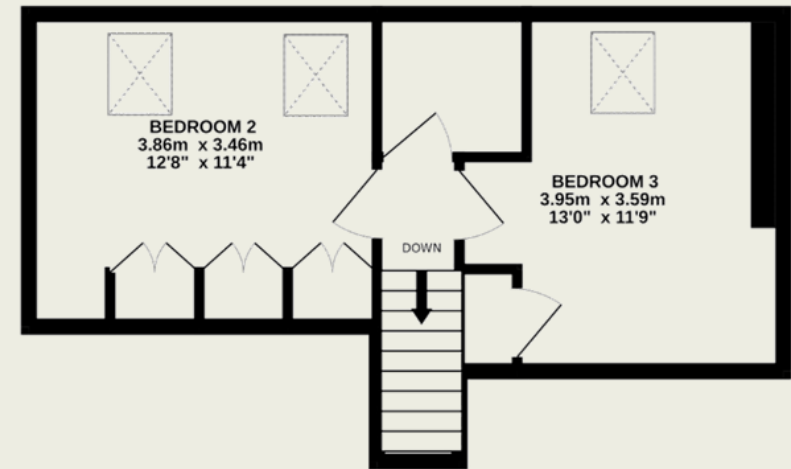
Important Information

These particulars do not constitute an offer or contract in whole or part. The statements contained herein are made without responsibility on the part of Ashtons or the vendors and they cannot be relied upon as representatives of fact. In respect of floor plans, these are for illustrative purposes only. The measurement and position of each element is approximate and must be viewed as such. Intending purchasers should therefore satisfy themselves by inspection or otherwise as to their correctness. The vendors do not make or give, and neither Ashtons nor any person in their employment has any authority to make or give, any representation or warranty whatsoever in relation to this property. We offer a wide range of services through third party providers including solicitors, surveyors, removal firms, mortgage providers and EPC suppliers. We receive additional payments for administering suppliers quoting software and making referrals. You are not under any obligations to use these services and it is your discretion whether you choose to deal with these parties or your own preferred supplier. You should be aware the average payment we received in 2021 equated to £48.36 per referral.

GROUND FLOOR
83.3 sq.m. (896 sq.ft.) approx.



1ST FLOOR
31.5 sq.m. (339 sq.ft.) approx.



TOTAL FLOOR AREA : 114.7 sq.m. (1235 sq.ft.) approx.

This floorplan is for illustrative purposes only. The measurement and position of each element is approximate and must be viewed as such.