



George Street,
Markyate, St. Albans,
AL3

 2 Bedrooms

 1 Bathroom

 1 Reception Room

 On-Street

 Rear Garden

 EPC Band TBC

Council Tax
Band: – £1,983.56 (2024/25)

Guide Price
£390,000 Freehold

 **ashtons**
for life's great moves



Charming refurbished character cottage located close to village amenities in the popular village of Markyate.

Description

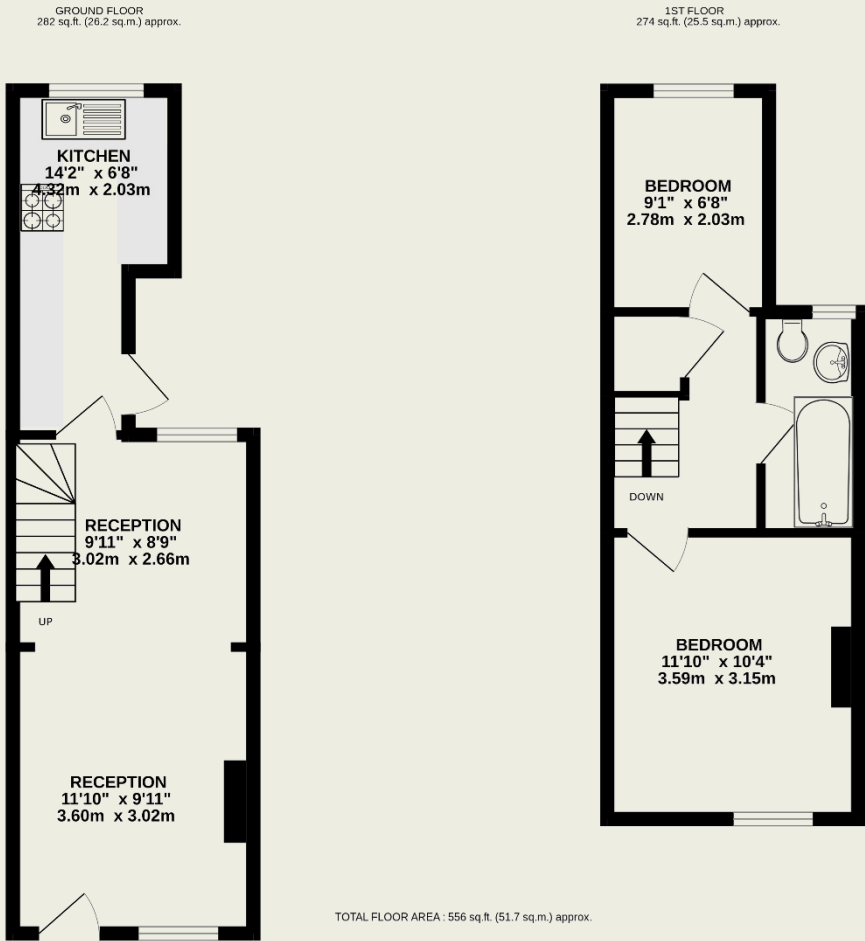
This pretty character cottage is located just a short walk from the High Street.

The current owners have recently improved the property and the main living space has been redecorated with new wood block flooring. A stylish new kitchen has been fitted with an attractive range of cabinets and integrated appliances. Upstairs there are two good size bedrooms, which have both also been redecorated and a bathroom with three piece suite.

Outside the rear garden is hard landscaped and fully fenced.

Location

Located near the High Street in Markyate, a picturesque village in Hertfordshire with excellent local amenities. Conveniently located for the M1 and M25 motorways and Luton Airport with easy access to efficient rail links and wider amenities at nearby Harpenden and the historic City of St. Albans.



This floorplan is for illustrative purposes only. The measurement and position of each element is approximate and must be viewed as such.

Important Information

These particulars do not constitute an offer or contract in whole or part. The statements contained herein are made without responsibility on the part of Ashtons or the vendors and they cannot be relied upon as representatives of fact. In respect of floor plans, these are for illustrative purposes only. The measurement and position of each element is approximate and must be viewed as such. Intending purchasers should therefore satisfy themselves by inspection or otherwise as to their correctness. The vendors do not make or give, and neither Ashtons nor any person in their employment has any authority to make or give, any representation or warranty whatsoever in relation to this property.

We offer a wide range of services through third-party providers including solicitors, surveyors, removal firms, mortgage providers and EPC suppliers. We receive additional payments for administering suppliers quoting software and making referrals. You are not under any obligation to use these services and it is your discretion whether you choose to deal with these parties or your own preferred supplier. You should be aware the average payment we received in 2021 equated to £48.36 per referral.