



5 Bedrooms



4 Bath/Shower Room + WC



2 Reception Rooms



Garage and Driveway



Landscaped Garden



EPC Band C

Council Tax

Band F - £3,243.86 (2024/25)

Local Authority

St Albans Council



Lords Meadow, Redbourn, St. Albans, AL3 7BX
Guide Price £1,375,000 Freehold

Fabulous five bedroom family home which has been recently extended and refurbished to a high standard. Located close to Redbourn JMI school and within walking distance of village amenities and Redbourn Common.

- 🏡 Impressive detached family home
- 🏡 Recently extended and refurbished to a high standard
- 🏡 Five bedrooms
- 🏡 Open plan kitchen/family room
- 🏡 Living room and snug
- 🏡 Principal bedroom with walk in wardrobe, office space and ensuite
- 🏡 Landscaped garden with garden kitchen

Description

This superb, detached home offers spacious and flexible accommodation and has been thoughtfully extended and improved to create a wonderful space for family living and entertaining friends.

The ground floor living space includes a welcoming hallway with glazed wall and door into a large reception room with feature fireplace a separate snug/study sits to the other side of the hallway. To the rear of the property is a stunning kitchen/family room which is flooded with light from large Velux skylights and two sets of bi-fold doors opening out to the landscaped garden. The kitchen area is fitted with bespoke units, high end appliances and central island - a chef's delight! A separate utility room and downstairs WC sit just off. Upstairs on the first floor there are four good size bedrooms, two of which have ensuite shower rooms. A further luxurious family bathroom serves the remaining two bedrooms. On the top floor is a superb principal suite with walk-in wardrobe, a space for homeworking and stylish ensuite bathroom, with freestanding bath and separate shower cubicle. Outside to the front a block paved driveway provides ample off-street parking and leads to the garage. A side entrance gives access to the rear garden which has been beautifully landscaped and backs onto school playing fields. The garden is fully fenced and is wonderfully private and has seating areas in which to dine and relax and a raised lawn. A separate kitchen is accessed via bi-fold doors for use when entertaining - a wonderful addition to this impressive property!

Location

Lords Meadow is situated within Redbourn, a popular Hertfordshire village, close to the Common and walking distance to the well regarded Redbourn JMI School and The High Street with its excellent local amenities, yet within close proximity to the larger towns of Harpenden and St Albans which offer a fast and efficient rail service into London St Pancras and The City.

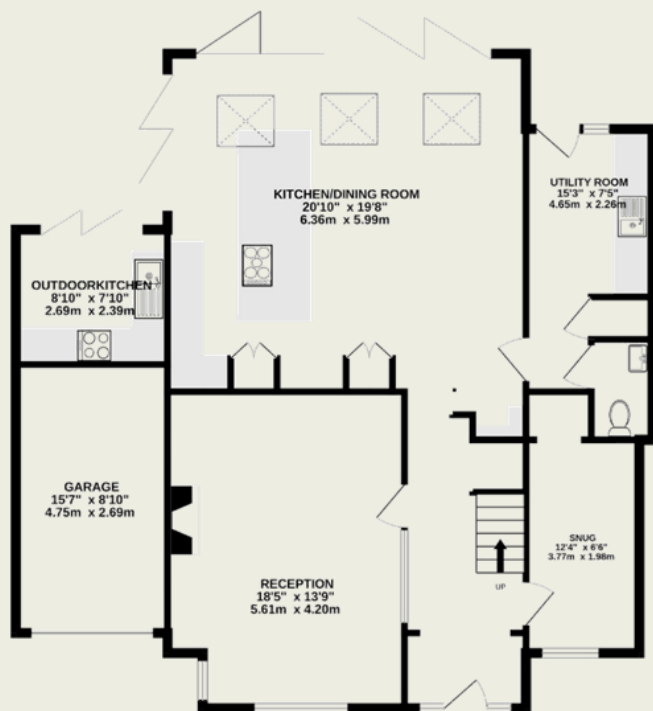




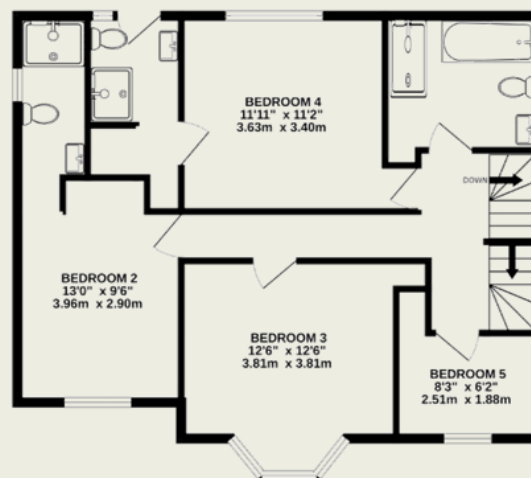
Important Information

These particulars do not constitute an offer or contract in whole or part. The statements contained herein are made without responsibility on the part of Ashtons or the vendors and they cannot be relied upon as representatives of fact. In respect of floor plans, these are for illustrative purposes only. The measurement and position of each element is approximate and must be viewed as such. Intending purchasers should therefore satisfy themselves by inspection or otherwise as to their correctness. The vendors do not make or give, and neither Ashtons nor any person in their employment has any authority to make or give, any representation or warranty whatsoever in relation to this property. We offer a wide range of services through third party providers including solicitors, surveyors, removal firms, mortgage providers and EPC suppliers. We receive additional payments for administering suppliers quoting software and making referrals. You are not under any obligations to use these services and it is your discretion whether you choose to deal with these parties or your own preferred supplier. You should be aware the average payment we received in 2021 equated to £48.36 per referral.

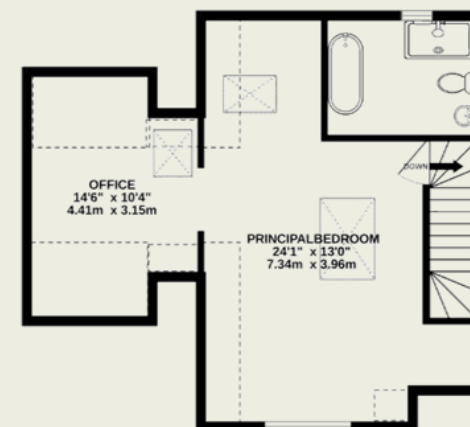
GROUND FLOOR
1201 sq.ft. (111.6 sq.m.) approx.



1ST FLOOR
737 sq.ft. (68.5 sq.m.) approx.



2ND FLOOR
511 sq.ft. (47.5 sq.m.) approx.



TOTAL FLOOR AREA : 2450 sq.ft. (227.6 sq.m.) approx.

This floorplan is for illustrative purposes only. The measurement and position of each element is approximate and must be viewed as such.