



5 Bedrooms



3 Bath/Shower Rooms



Garage and driveway



Front and Rear Gardens



EPC Band C

Council Tax  
Band G - £3,742.91 (2024/25)  
Local Authority  
St Albans Council

 **ashtons**  
for life's great moves



**Redfield Close, Redbourn, AL3 7BB**  
**Guide Price £1,250,000 Freehold**



Stunning five double bedroom detached home situated in this select gated development of just four homes located a short walk from Redbourn Common and the village centre. OFFERED CHAIN FREE.

- 🏡 Close to Redbourn Common
- 🏡 Spacious accommodation
- 🏡 Large living room and family room
- 🏡 Large kitchen/diner
- 🏡 Five double bedrooms
- 🏡 Two en-suites and family bathroom
- 🏡 Garage and driveway

## Description

This beautiful family home is configured over three levels and offers generous and flexible living accommodation.

The entrance hall is spacious and light with plenty of storage space and a ground floor cloakroom. The reception rooms are situated at the back of the property, and both have lovely views over the attractive rear garden. The main reception room has leaded French doors opening out onto the patio. The kitchen/diner is well fitted with Oak floor and wall units with granite worktops and there is a good-size utility room just off.

On the first floor there are four double bedrooms, the two at the back of the house have lovely views across part of Redbourn Common. One of these bedrooms has a large ensuite bathroom. There are two further double bedrooms at the front of the property and a large family bathroom with a separate shower cubicle and bath. On the second floor is a spacious master bedroom suite with two Velux windows, a walk-in wardrobe and further eaves storage. There is also an impressive en-suite wet room.

Outside, to the front, the driveway can accommodate four cars and leads to an integral garage. The pretty rear garden is mainly laid to lawn with a patio seating area and a naturally balancing pond which supports wildlife. There is access through gates on both sides of the property with a covered area to one side for bike storage and there is an outside tap.

## Location

Situated just off the Common, a beautiful location a short walk from the High Street in Redbourn, a picturesque village in Hertfordshire. The local bus service which serves Roundwood School is located moments away. Also conveniently located for the M1 J9 and M25 motorways and London Luton Airport, with easy access to efficient rail links at Harpenden and St. Albans.



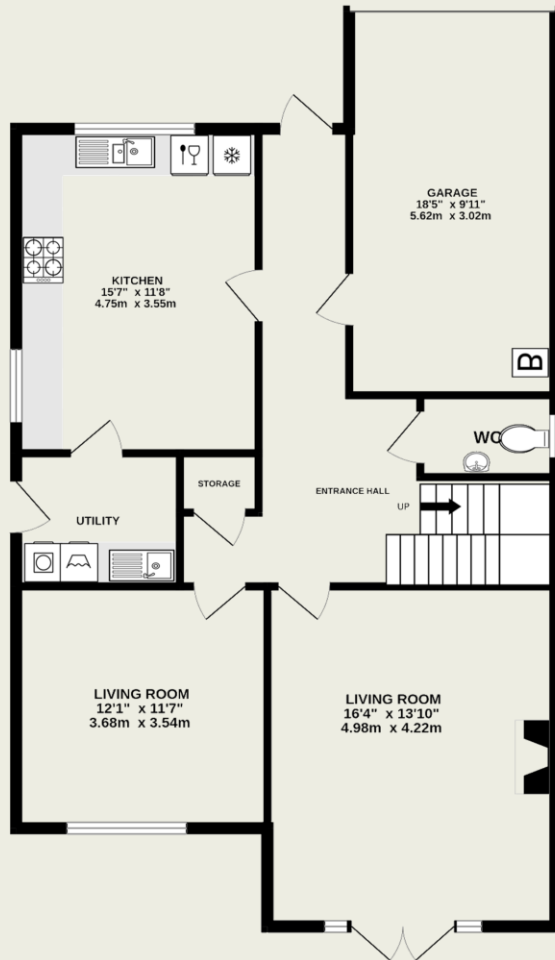




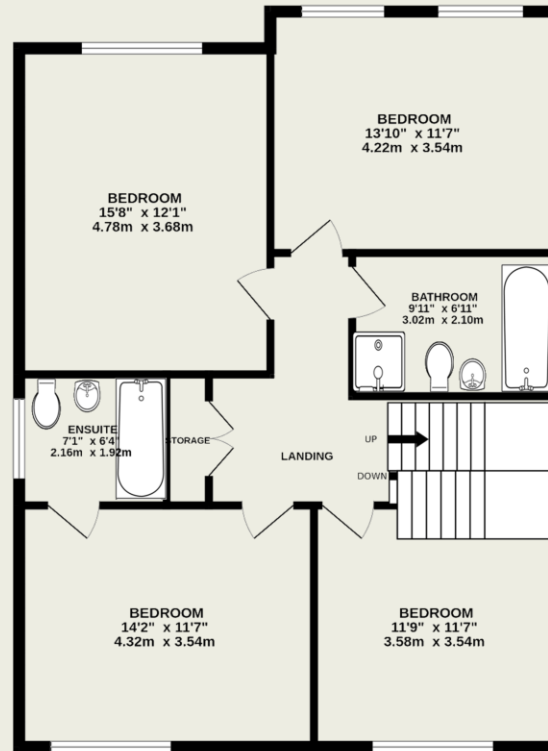
#### Important Information

These particulars do not constitute an offer or contract in whole or part. The statements contained herein are made without responsibility on the part of Ashtons or the vendors and they cannot be relied upon as representatives of fact. In respect of floor plans, these are for illustrative purposes only. The measurement and position of each element is approximate and must be viewed as such. Intending purchasers should therefore satisfy themselves by inspection or otherwise as to their correctness. The vendors do not make or give, and neither Ashtons nor any person in their employment has any authority to make or give, any representation or warranty whatsoever in relation to this property. We offer a wide range of services through third party providers including solicitors, surveyors, removal firms, mortgage providers and EPC suppliers. We receive additional payments for administering suppliers quoting software and making referrals. You are not under any obligations to use these services and it is your discretion whether you choose to deal with these parties or your own preferred supplier. You should be aware the average payment we received in 2021 equated to £48.36 per referral.

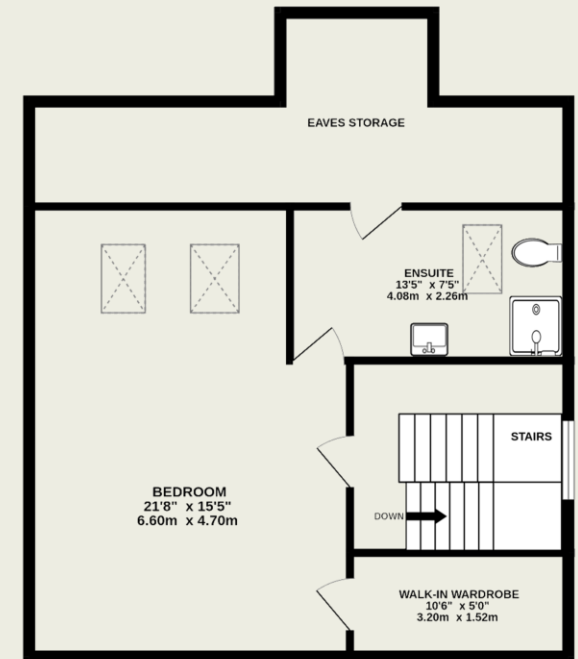
GROUND FLOOR  
986 sq.ft. (91.6 sq.m.) approx.



FIRST FLOOR  
895 sq.ft. (83.2 sq.m.) approx.



SECOND FLOOR  
724 sq.ft. (67.2 sq.m.) approx.



TOTAL FLOOR AREA : 2605 sq.ft. (242.0 sq.m.) approx.

This floorplan is for illustrative purposes only. The measurement and position of each element is approximate and must be viewed as such.