



High Street,
Markyate, St. Albans,
AL3

 2 Bedrooms

 1 Bath/Shower Rooms

 1 Reception Rooms

 On-Street

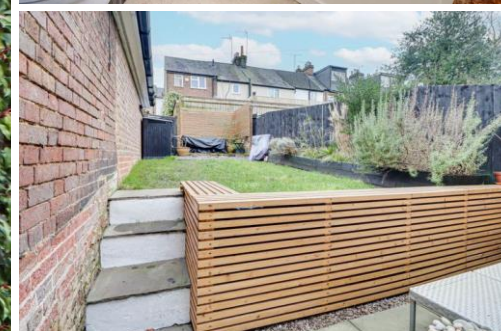
 Private Rear Garden

 EPC Band E

Council Tax
Band: C – £1,983.56 (2024/25)

Guide Price
£375,000 Freehold

 **ashtons**
for life's great moves



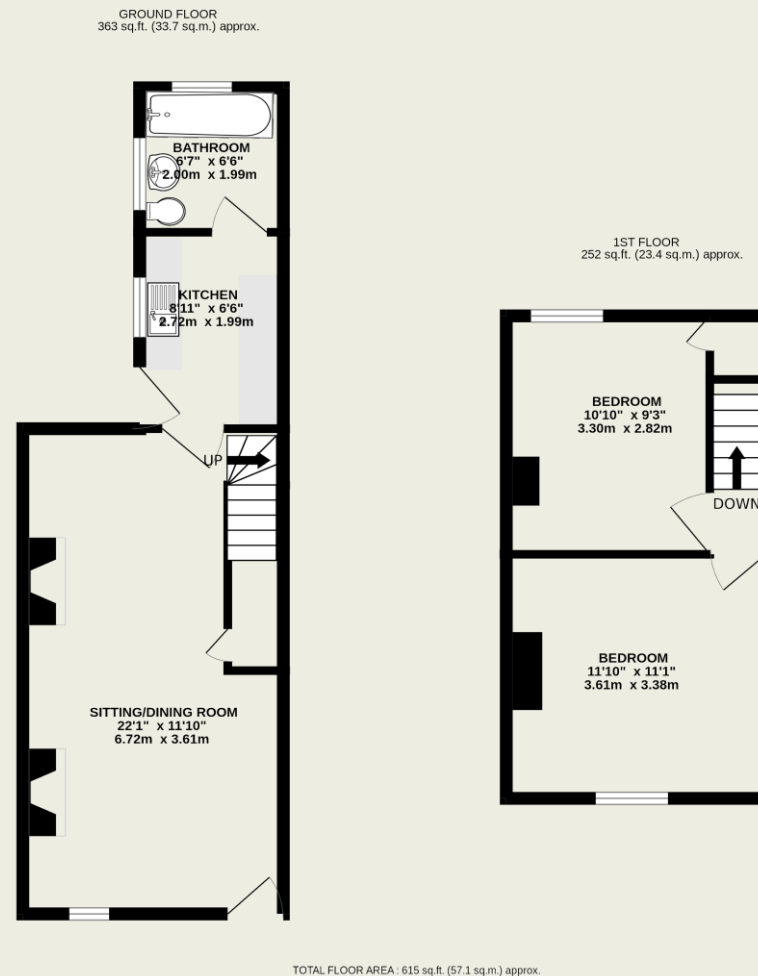
Charming two bedroom character cottage, located close to amenities in this popular village.

Description

This delightful property is well located just a short stroll from village amenities and beautifully presented throughout. On entering the property you are greeted by a light and spacious living/dining room which is full of character with wood flooring and open fireplaces in both the sitting and dining areas. To the rear is an attractive 'galley' style fitted kitchen with integrated appliances. A modern bathroom with three-piece suite and shower with glass screen over the bath completes the ground floor. Upstairs there are two double bedrooms. Outside the rear garden is on two levels, with a patio seating area and steps up to a lawn with further patio at the far end of the garden, so the sun can be enjoyed at different times of the day!

Location

Located on the High Street in Markyate, a picturesque village in Hertfordshire, which has a primary school, bakery, convenience store with Post Office, pharmacy, restaurants and three pubs. Conveniently located for the M1 and M25 motorways as well as London Luton Airport, and with easy access to efficient rail links at nearby Luton Airport Parkway, Harpenden and St. Albans. Markyate is also within the catchment area for Harpenden's excellent schools.



This floorplan is for illustrative purposes only. The measurement and position of each element is approximate and must be viewed as such.

Important Information

These particulars do not constitute an offer or contract in whole or part. The statements contained herein are made without responsibility on the part of Ashtons or the vendors and they cannot be relied upon as representatives of fact. In respect of floor plans, these are for illustrative purposes only. The measurement and position of each element is approximate and must be viewed as such. Intending purchasers should therefore satisfy themselves by inspection or otherwise as to their correctness. The vendors do not make or give, and neither Ashtons nor any person in their employment has any authority to make or give, any representation or warranty whatsoever in relation to this property.

We offer a wide range of services through third-party providers including solicitors, surveyors, removal firms, mortgage providers and EPC suppliers. We receive additional payments for administering suppliers quoting software and making referrals. You are not under any obligation to use these services and it is your discretion whether you choose to deal with these parties or your own preferred supplier. You should be aware the average payment we received in 2021 equated to £48.36 per referral.