



3 Bedrooms



1 Bathroom and
Downstairs WC



1 Reception Room



Allocated Parking



Landscaped Garden



EPC Band C

Council Tax
Band D - £2,340.09 2025/26
Local Authority
Dacorum

Service charge £180 pa

 **ashtons**
for life's great moves



Bartholomew Green, Markyate, St Albans, AL3
Guide Price £410,000 Freehold

Bartholomew Green, Markyate

An excellent three double bedroom townhouse with landscaped rear garden and allocated parking. Located in a sought-after private cul-de-sac close to the centre of the village.

- 🏡 Modern townhouse
- 🏡 Quiet cul-de-sac location
- 🏡 Close to amenities
- 🏡 Large living/dining room
- 🏡 Modern kitchen
- 🏡 Three double bedrooms
- 🏡 Bathroom and downstairs WC

Description

This delightful modern home has accommodation laid out across three floors. On the ground floor the entrance hall leads through to a large living/dining room with French doors opening out to the private rear garden. A modern fitted kitchen is situated at the front of the property and there is also a guest cloakroom on this level.

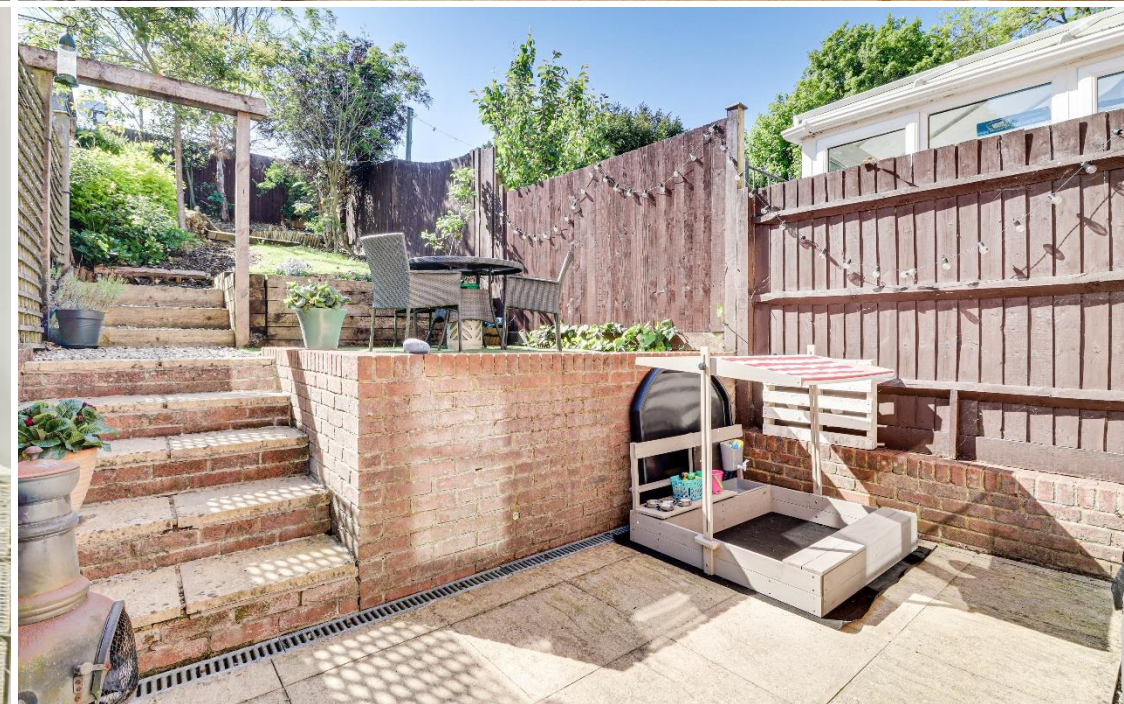
On the first floor there are two double bedrooms served by a family bathroom. Stairs rise to the top floor which offers a further large dual aspect double bedroom with under eaves storage.

Outside the rear garden is attractively landscaped on three levels, with a patio seating area and steps up to two lawned area with flower beds. The property also has an allocated parking space and there are five visitor spaces for communal use.

Location

Located in this highly sought after turning close to the centre of Markyate, a picturesque village in Hertfordshire. The village itself offers an excellent range of local amenities including local school, shops and pubs. Conveniently located for the M1 and M25 motorways and Luton Airport with easy access to efficient rail links at nearby Harpenden and St. Albans.

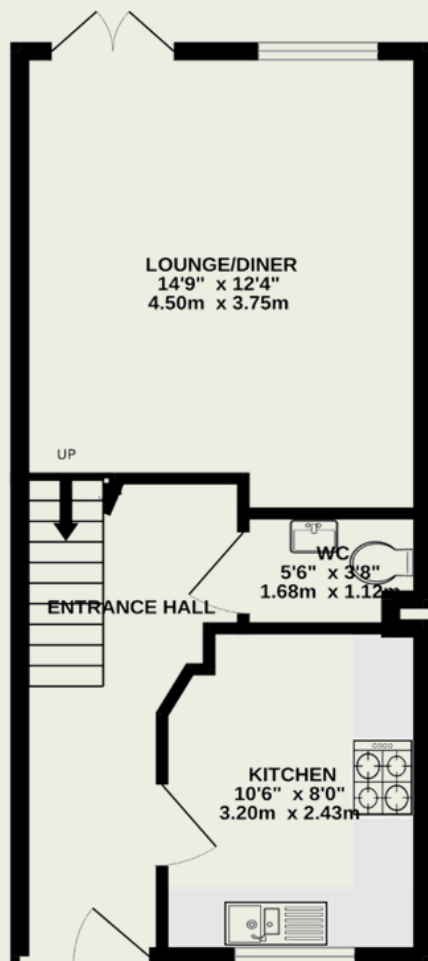




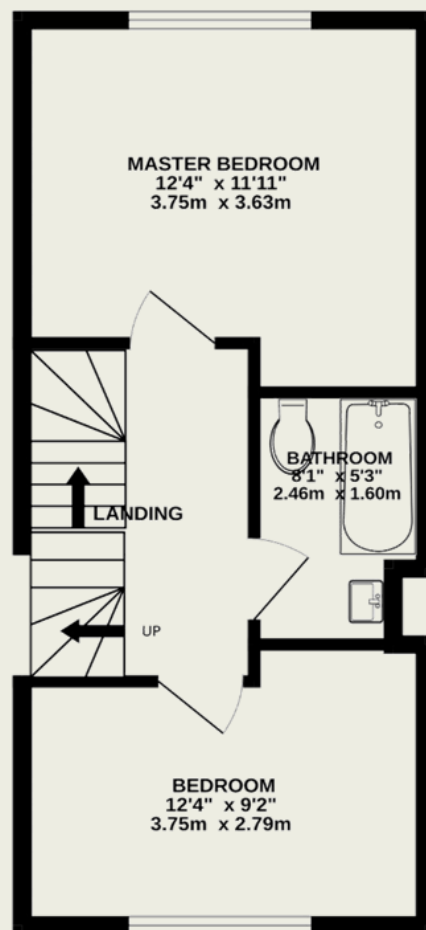
Important Information

These particulars do not constitute an offer or contract in whole or part. The statements contained herein are made without responsibility on the part of Ashtons or the vendors and they cannot be relied upon as representatives of fact. In respect of floor plans, these are for illustrative purposes only. The measurement and position of each element is approximate and must be viewed as such. Intending purchasers should therefore satisfy themselves by inspection or otherwise as to their correctness. The vendors do not make or give, and neither Ashtons nor any person in their employment has any authority to make or give, any representation or warranty whatsoever in relation to this property. We offer a wide range of services through third party providers including solicitors, surveyors, removal firms, mortgage providers and EPC suppliers. We receive additional payments for administering suppliers quoting software and making referrals. You are not under any obligations to use these services and it is your discretion whether you choose to deal with these parties or your own preferred supplier. You should be aware the average payment we received in 2021 equated to £48.36 per referral.

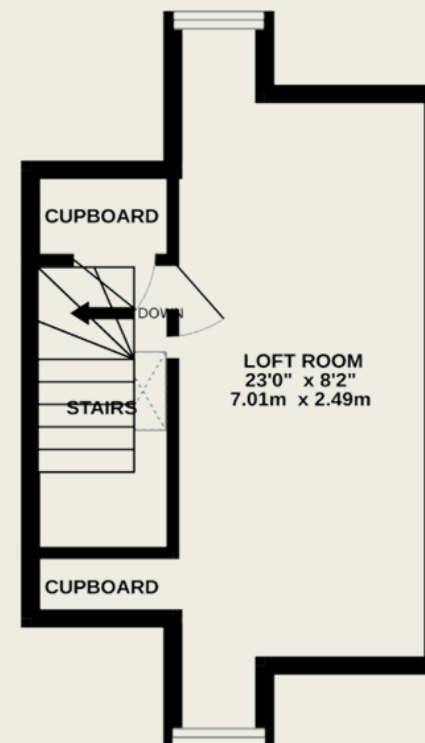
GROUND FLOOR
357 sq.ft. (33.2 sq.m.) approx.



1ST FLOOR
356 sq.ft. (33.1 sq.m.) approx.



2ND FLOOR
222 sq.ft. (20.7 sq.m.) approx.



TOTAL FLOOR AREA : 936 sq.ft. (86.9 sq.m.) approx.

This floorplan is for illustrative purposes only. The measurement and position of each element is approximate and must be viewed as such.