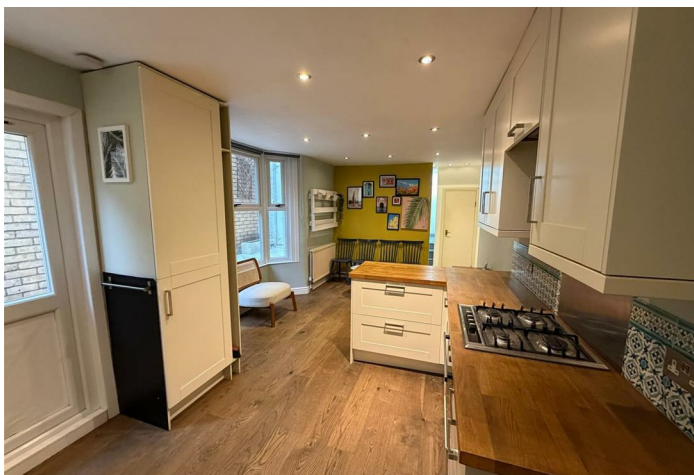




## Umfreville Road , London N4 1SB

- GROUND FLOOR FLAT
  - KITCHEN
  - PATIO AREA
- TWO BEDROOMS
  - DINING AREA
- GREAT LOCATION
- EPC RATING C

**£2,500**

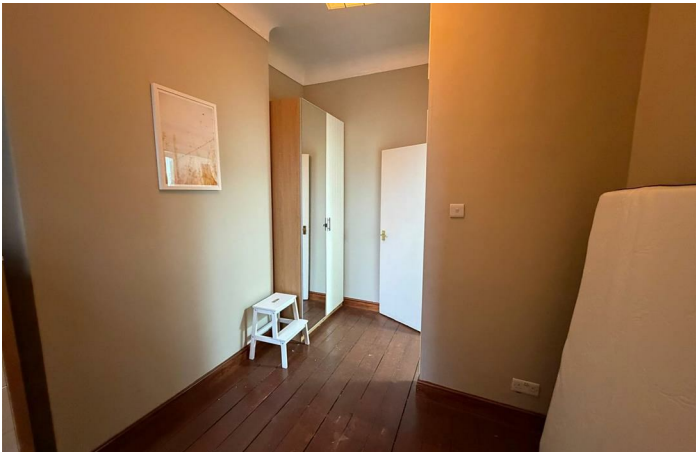






Location

Advertising on behalf of Endgame Estates using their photos and details.





**Local Authority London Borough of Haringey**  
**Council Tax Band C**  
**EPC Rating C**

**Churchills Lettings Office**

16 High Street, Mexborough, South  
Yorkshire, S64 9AS

**Contact**

01709 582880  
[Info@churchillsestateagents.com](mailto:Info@churchillsestateagents.com)  
[www.churchillsestateagents.com](http://www.churchillsestateagents.com)

Agents Note: Whilst every care has been taken to prepare these particulars, they are for guidance purposes only. All measurements are approximate and for general guidance purposes only and whilst every care has been taken to ensure accuracy, they should not be relied upon and potential buyers/tenants are advised to recheck the measurements.