

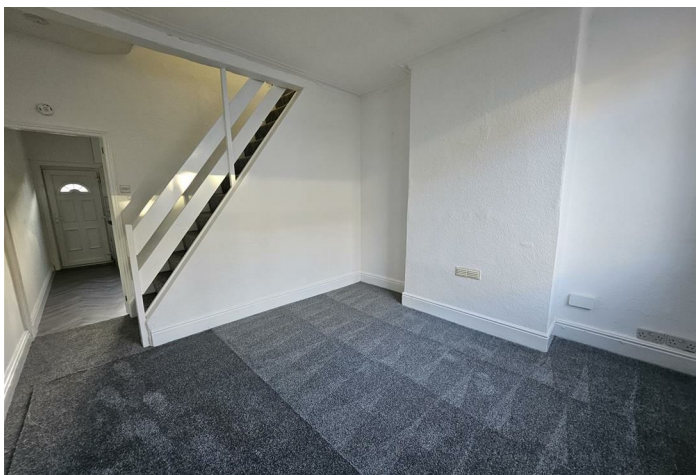
The logo for Churchills, featuring the word "Churchills" in a stylized, red, outlined font with a white drop shadow.

## Charles Street

Goldthorpe, Rotherham S63 9LX

- TWO BEDROOMS
- UPGRADED BATHROOM
  - NEW FLOORING
- GAS CENTRAL HEATING
- NEW KITCHEN & COOKING FACILITIES
  - NEWLY DECORATED
- UPVC DOUBLE GLAZING
  - EPC RATING D

**£595 PCM**





Location





**Local Authority Barnsley Council**  
**Council Tax Band A**  
**EPC Rating D**

**Churchills Lettings Office**

16 High Street, Mexborough, South  
Yorkshire, S64 9AS

**Contact**

01709 582880  
[Info@churchillsestateagents.com](mailto:Info@churchillsestateagents.com)  
[www.churchillsestateagents.com](http://www.churchillsestateagents.com)

Agents Note: Whilst every care has been taken to prepare these particulars, they are for guidance purposes only. All measurements are approximate and for general guidance purposes only and whilst every care has been taken to ensure accuracy, they should not be relied upon and potential buyers/tenants are advised to recheck the measurements.