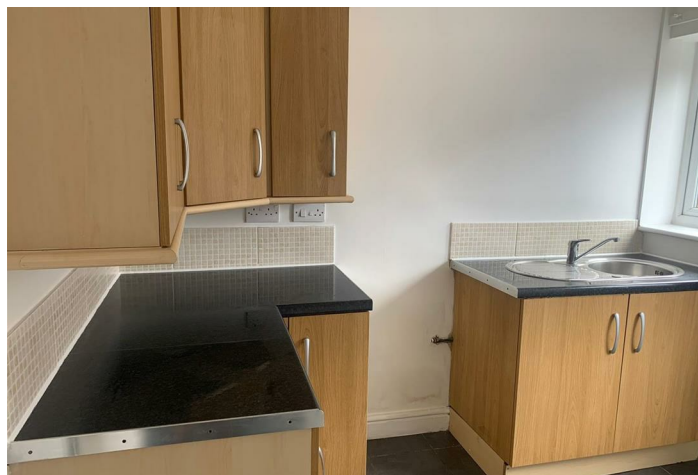




## **Bedford Street** , Maltby S66 7HZ

- ONE BEDROOM
- SELF-CONTAINED
- LOUNGE, KITCHEN & BATHROOM
- CONVENIENT LOCATION
- GROUND FLOOR FLAT
- NEWLY DECORATED
- SMALL FRONT GARDEN
- EPC RATNG C

**£525 Per Calendar Month**







Location





**Local Authority RMBC**  
**Council Tax Band A**  
**EPC Rating C**

**Churchills Lettings Office**

16 High Street, Mexborough, South  
Yorkshire, S64 9AS

**Contact**

01709 582880  
[Info@churchillsestateagents.com](mailto:Info@churchillsestateagents.com)  
[www.churchillsestateagents.com](http://www.churchillsestateagents.com)

Agents Note: Whilst every care has been taken to prepare these particulars, they are for guidance purposes only. All measurements are approximate and for general guidance purposes only and whilst every care has been taken to ensure accuracy, they should not be relied upon and potential buyers/tenants are advised to recheck the measurements.