

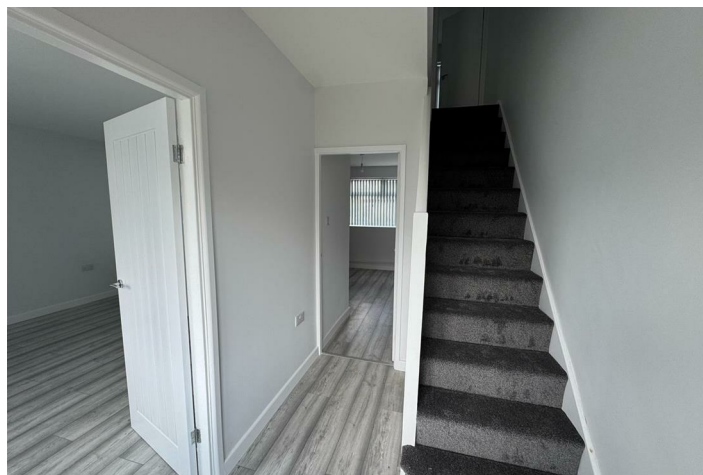
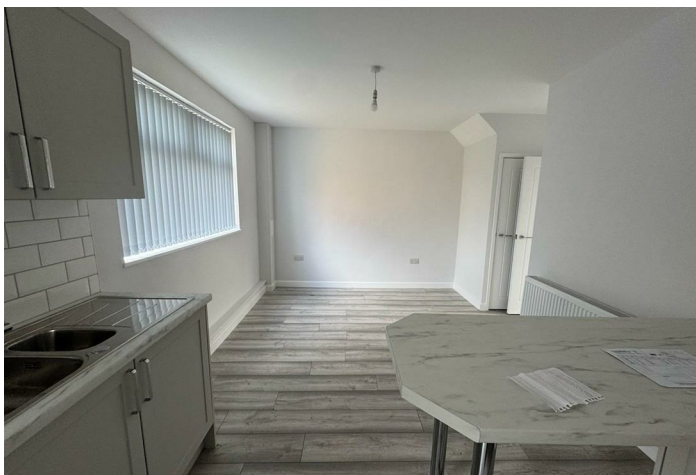
The logo for Churchills, featuring the word 'Churchills' in a stylized, red, outlined font with a white drop shadow.

## Mill View

, Bolton-Upon-Deane S63 8JX

- RENOVATED PROPERTY
- NEW KITCHEN & BATHROOM
  - NEWLY DECORATED
    - NEW BOILER
    - EPC RATING D
- MODERN LIVING
  - DINING AREA
  - NEW FLOORING
  - OFF ROAD PARKING

**£800 Per Calendar Month**

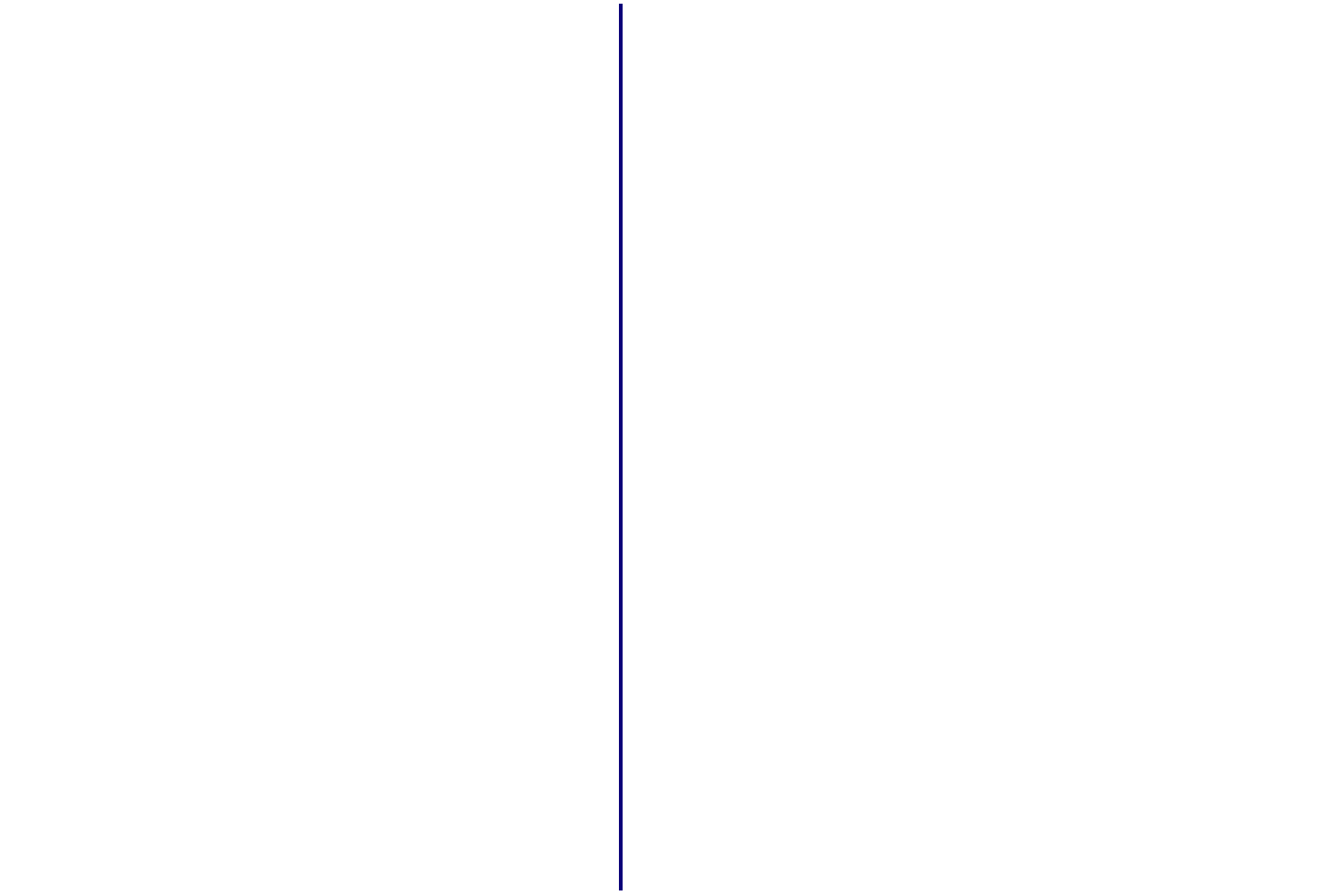




Location







**Local Authority Barnsley**  
**Council Tax Band A**  
**EPC Rating D**



**Churchills Lettings Office**

16 High Street, Mexborough, South  
Yorkshire, S64 9AS

**Contact**

01709 582880  
[Info@churchillsestateagents.com](mailto:Info@churchillsestateagents.com)  
[www.churchillsestateagents.com](http://www.churchillsestateagents.com)

Agents Note: Whilst every care has been taken to prepare these particulars, they are for guidance purposes only. All measurements are approximate and for general guidance purposes only and whilst every care has been taken to ensure accuracy, they should not be relied upon and potential buyers/tenants are advised to recheck the measurements.