

Churchills

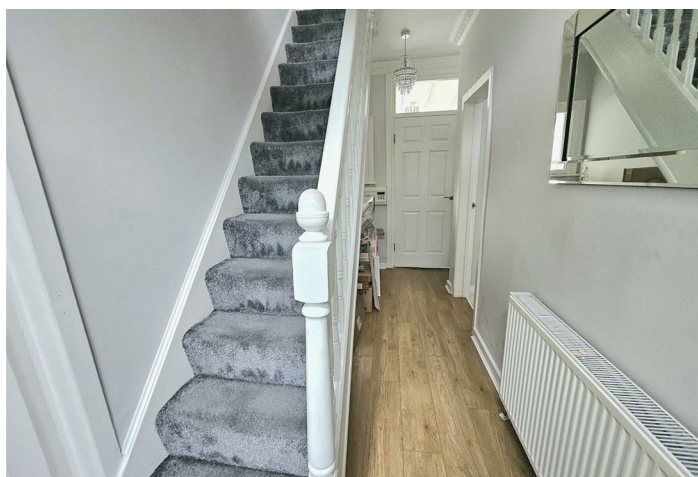


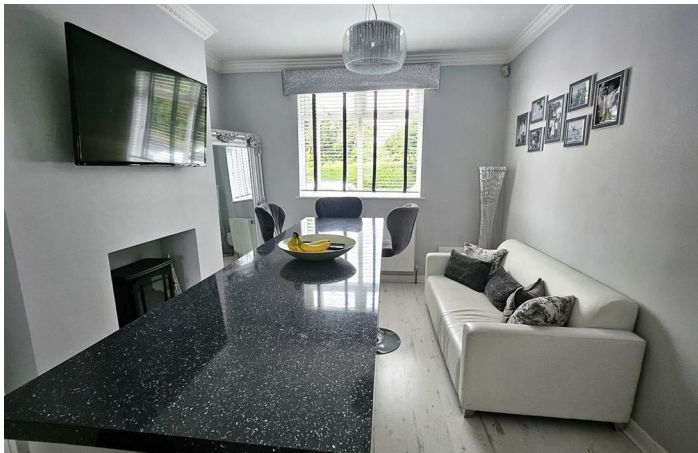
Rotherham Road

Wath-Upon-Dearne, Rotherham S63 6AD

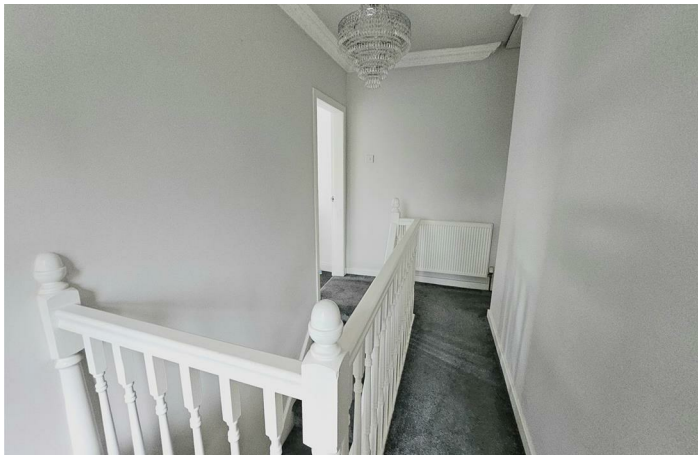
- DOUBLE FRONTED PROPERTY
- SEPARATE DUAL ASPECT LOUNGE
 - THREE BEDROOMS
- ENCLOSED GARDEN & DECKING
 - EPC RATING E
- MODERN KITCHEN & DINING SPACE
- EXTENDED UTILITY / PLAY ROOM
 - LARGE BATHROOM
 - GREAT LOCATION

£995 Per Calendar Month



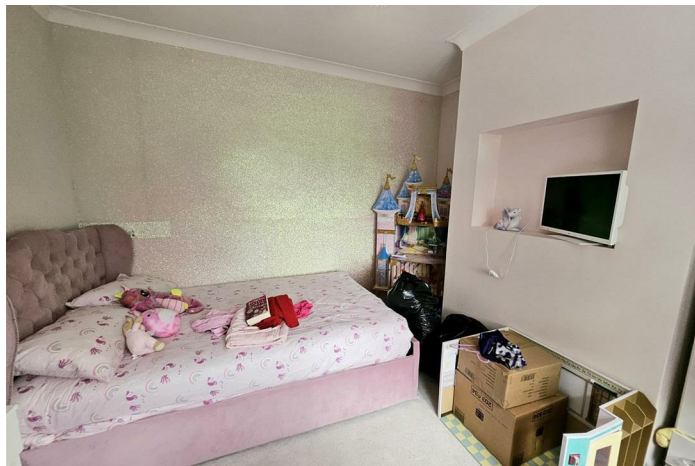
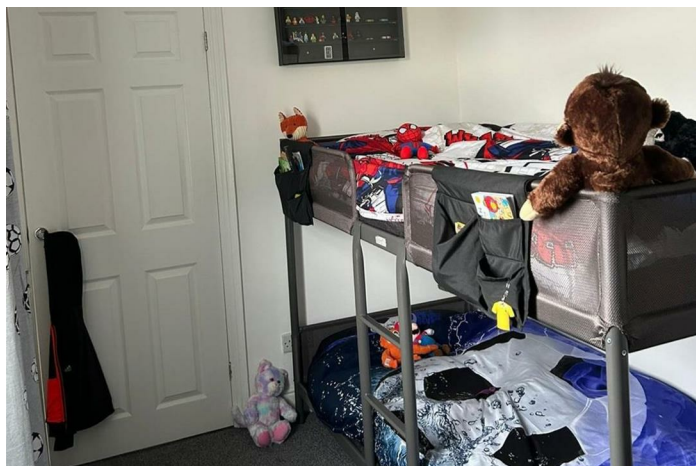


Location





Local Authority Rotherham
Council Tax Band A
EPC Rating E



Churchills Lettings Office

16 High Street, Mexborough, South
Yorkshire, S64 9AS

Contact

01709 582880
Info@churchillsestateagents.com
www.churchillsestateagents.com

Agents Note: Whilst every care has been taken to prepare these particulars, they are for guidance purposes only. All measurements are approximate and for general guidance purposes only and whilst every care has been taken to ensure accuracy, they should not be relied upon and potential buyers/tenants are advised to recheck the measurements.